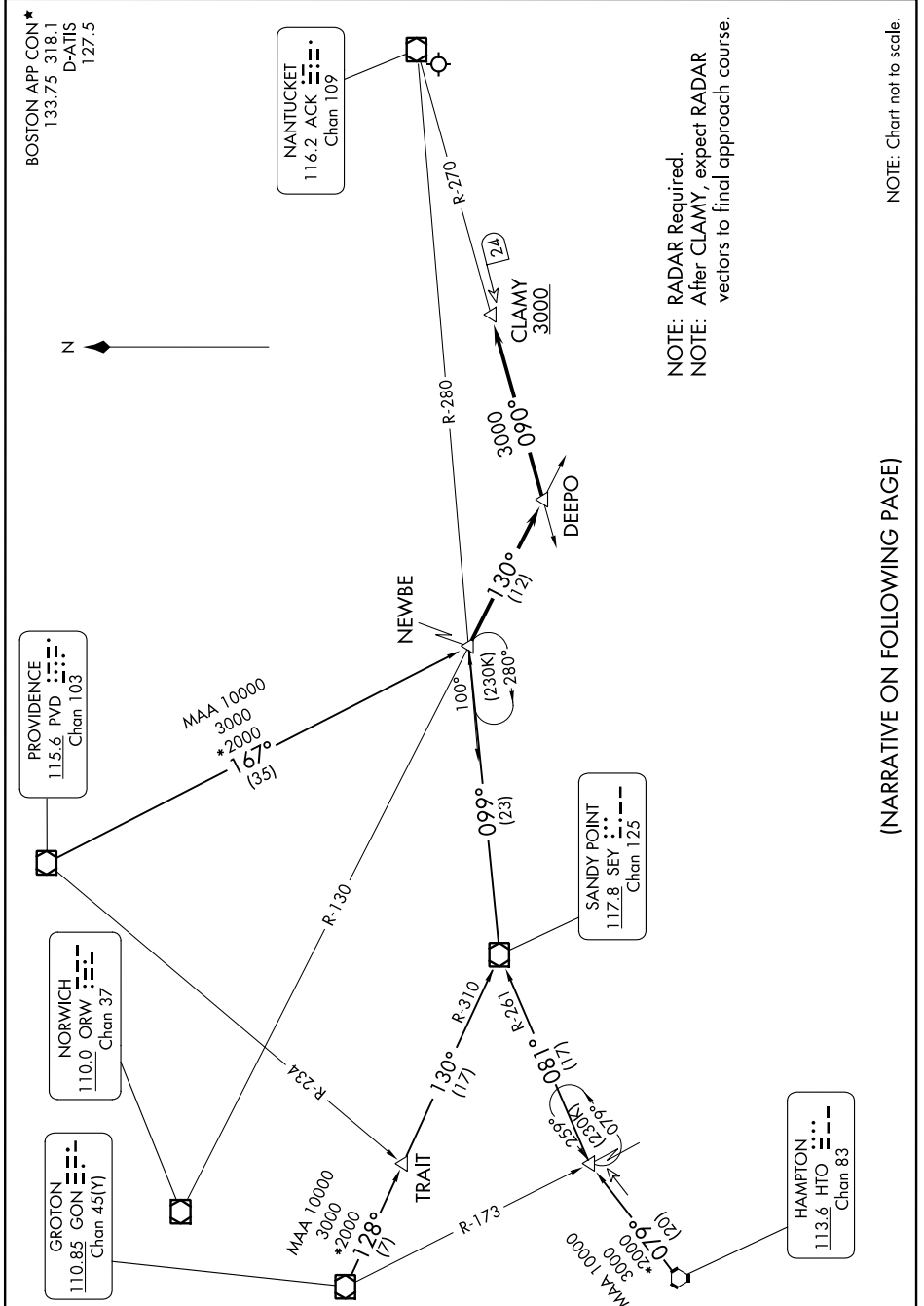


NEWBE THREE ARRIVAL

AL-659 (FAA)

NANTUCKET MEML (ACK)
NANTUCKET, MASSACHUSETTS

NE-1, 16 MAY 2024 to 13 JUN 2024



(NARRATIVE ON FOLLOWING PAGE)

NOTE: Chart not to scale.

NE-1, 16 MAY 2024 to 13 JUN 2024

NEWBE THREE ARRIVAL

(NEWBE.NEWBE3) 12OCT17

NANTUCKET, MASSACHUSETTS
NANTUCKET MEML (ACK)