

WAAS CH 77835 W33A	APP CRS 331°	Rwy ldg 4500 TDZE 41 Apt Elev 47
--	------------------------	---

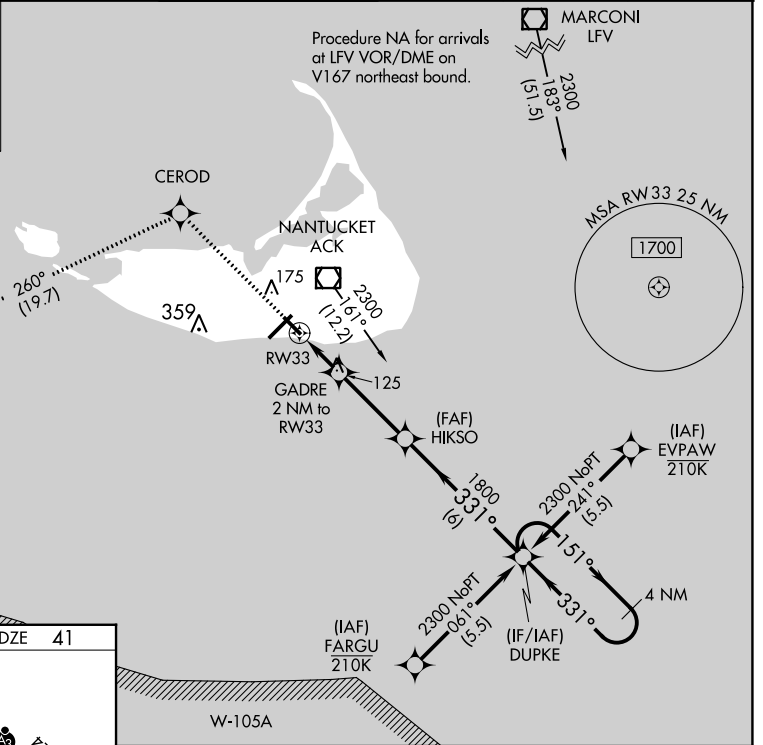
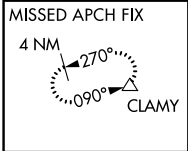
RNAV (GPS) RWY 33

NANTUCKET MEML (ACK)

Baro-VNAV NA when using Hyannis altimeter setting. For uncompensated Baro-VNAV systems, LNAV/VNAV NA below -11°C (13°F) or above 54°C (130°F). When local altimeter setting not received, use Hyannis altimeter setting: increase all DA 63 feet and all MDA 80 feet; increase LNAV Cats C and D visibility 1/8 mile and Circling Cat C visibility 1/4 mile. DME/DME RNP-0.3 NA.

MISSED APPROACH: Climb to 2500 direct CEROD and on track 260° to CLAMY and hold.

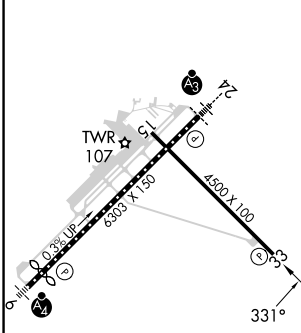
ATIS 127.5	BOSTON APP CON* 126.1 318.1	NANTUCKET TOWER* 118.3 (CTAF) 0	GND CON 132.5	CLNC DEL 119.375	UNICOM 122.95
----------------------	---------------------------------------	---	-------------------------	----------------------------	-------------------------



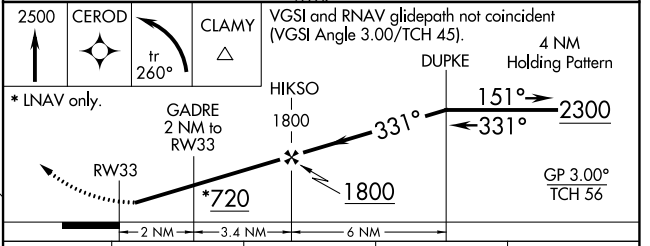
NE-1, 16 MAY 2024 to 13 JUN 2024

NE-1, 16 MAY 2024 to 13 JUN 2024

ELEV 47	D	TDZE 41
---------	----------	---------



TDZ/CL Rwy 24
REIL Rwy 15 and 33
MIRL Rwy 15-33 **0**
HIRL Rwy 6-24 **0**



CATEGORY	A	B	C	D
LPV DA		291-1	250 (300-1)	
LNAV/VNAV DA		301-1	260 (300-1)	
LNAV MDA		380-1	339 (400-1)	
C CIRCLING	480-1 433 (500-1)	500-1 453 (500-1)	720-2 673 (700-2)	1000-3 953 (1000-3)