

WAAS CH <b>81912</b> <b>W06A</b>	APP CRS <b>061°</b>	Rwy Idg TDZE Apt Elev	<b>5766</b> <b>38</b> <b>47</b>
--	------------------------	-----------------------------	---------------------------------------

# RNAV (GPS) RWY 6

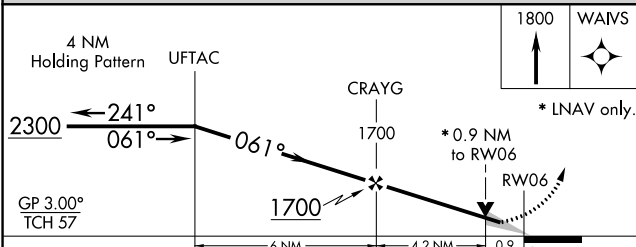
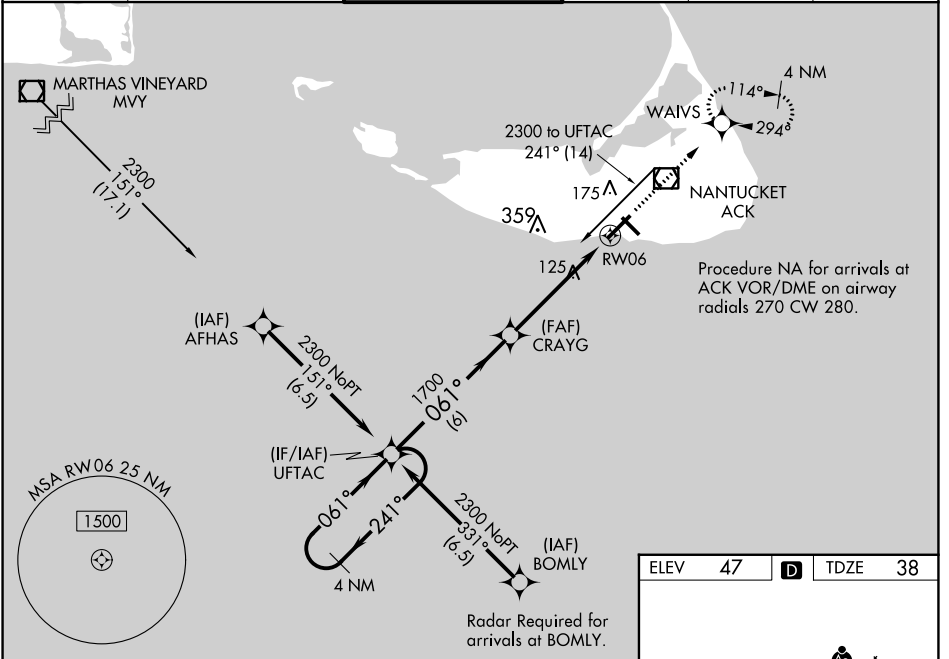
NANTUCKET MEML (ACK)

For uncompensated Baro-VNAV systems, LNAV/VNAV NA below -12°C (11°F) or above 54°C (130°F). DME/DME RNP-0.3 NA. Baro-VNAV and VDP NA when using Hyannis altimeter setting. When local altimeter setting not received, use Hyannis altimeter setting and increase LPV DA to 301, LNAV/VNAV DA to 363 and all MDA 80 feet; increase LNAV Cats C/D visibility to RVR 5000 and Circling Cats C/D visibility ¼ SM. Inoperative table does not apply to LPV. For inoperative ALS increase LNAV/VNAV all Cats visibility to RVR 4500, and LNAV Cat D visibility to RVR 5500. For inoperative ALS when using Hyannis altimeter setting, increase LPV all Cats visibility to RVR 4500, increase LNAV/VNAV all Cats visibility to RVR 6000 and increase LNAV Cats C/D to 1¼ SM.

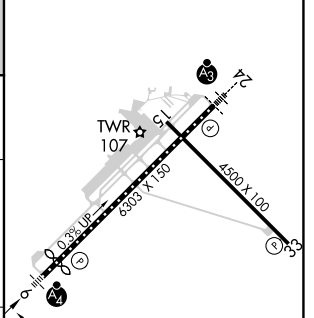
MALSF

MISSED APPROACH:  
Climb to 1800 direct  
WAIVS and hold.

ATIS <b>127.5</b>	BOSTON APP CON* <b>126.1 318.1</b>	NANTUCKET TOWER * <b>118.3 (CTAF) 0</b>	GND CON <b>132.5</b>	CLNC DEL <b>119.375</b>	UNICOM <b>122.95</b>
----------------------	---------------------------------------	--	-------------------------	----------------------------	-------------------------



ELEV 47	<b>D</b>	TDZE 38
---------	----------	---------



CATEGORY	A	B	C	D
LPV DA		238/40	200 (200-¾)	
LNAV/VNAV DA		300/40	262 (300-¾)	
LNAV MDA		380/40	342 (400-¾)	
<b>C</b> CIRCLING	480-1 433 (500-1)	500-1 453 (500-1)	720-2 673 (700-2)	720-2¼ 673 (700-2¼)

TDZ/CL Rwy 24

REIL Rwys 15 and 33

MIRL Rwy 15-33 **0**

HIRL Rwy 6-24 **0**

NE-1, 16 MAY 2024 to 13 JUN 2024

NE-1, 16 MAY 2024 to 13 JUN 2024