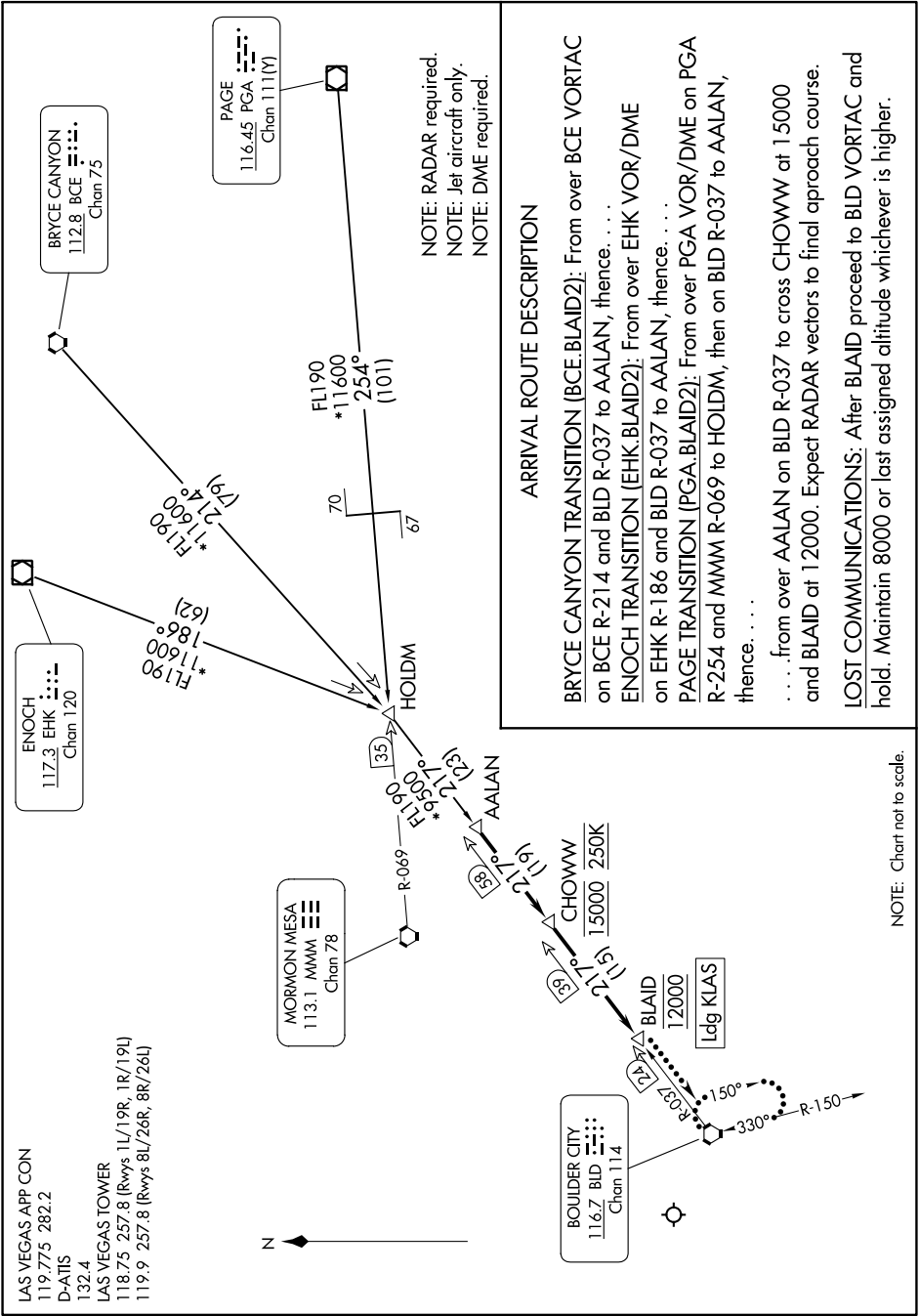


BLAID TWO ARRIVAL

AL-662 (FAA)

HARRY REID INTL (LAS)
LAS VEGAS, NEVADA

SW-4, 16 MAY 2024 to 13 JUN 2024



ARRIVAL ROUTE DESCRIPTION

BRYCE CANYON TRANSITION (BCE:BLAID2): From over BCE VORTAC on BCE R-214 and BLD R-037 to AALAN, thence. . . .

ENOC TRANSITION (EHK:BLAID2): From over EHK VOR/DME on EHK R-186 and BLD R-037 to AALAN, thence. . . .

PAGE TRANSITION (PGA:BLAID2): From over PGA VOR/DME on PGA R-254 and MMM R-069 to HOLDM, then on BLD R-037 to AALAN, thence. . . .

. . . . from over AALAN on BLD R-037 to cross CHOWWW at 15000 and BLAID at 12000. Expect RADAR vectors to final approach course.

LOST COMMUNICATIONS: After BLAID proceed to BLD VORTAC and hold. Maintain 8000 or last assigned altitude whichever is higher.

NOTE: RADAR required.
NOTE: Jet aircraft only.
NOTE: DME required.

NOTE: Chart not to scale.

SW-4, 16 MAY 2024 to 13 JUN 2024