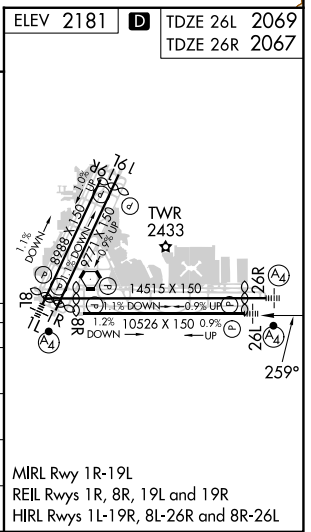
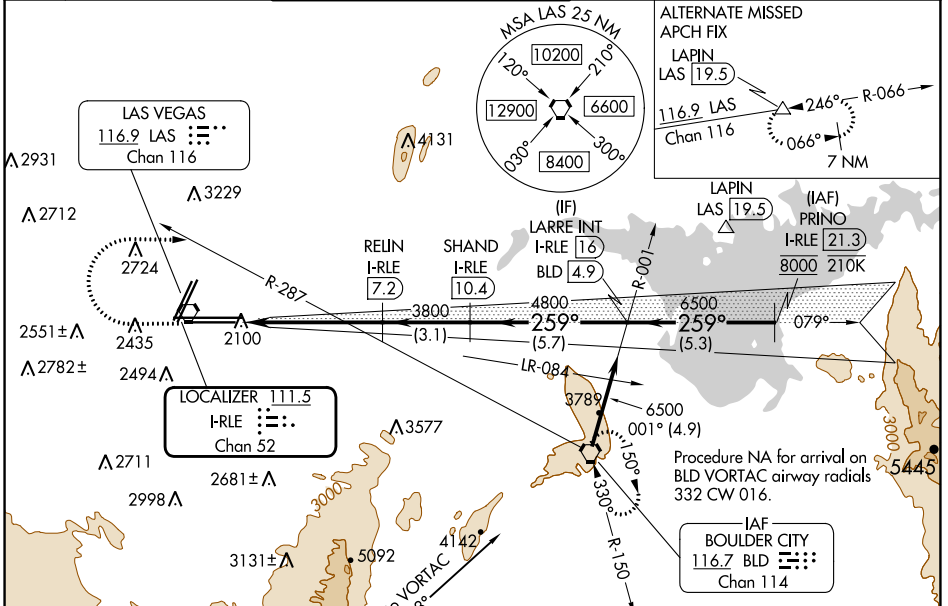


LOC/DME I-RLE	APP CRS	Rwy Idg	26L	26R
111.5	259°	10526	12638	
Chan 52		TDZE	2069	2067
		Apt Elev	2181	2181

ILS Z or LOC Z RWY 26L

HARRY REID INTL (LAS)

DME required.		MALS Fw Rwy 26L	MALS Rwy 26R	MISSED APPROACH: Climb to 3200 then climbing right turn to 6000 heading 080° and on BLD R-287 to BLD VORTAC and hold, continue climb-in-hold to 6000.	
<p>▼ Inop table does not apply to S-ILS 26L and Sidestep 26R.</p> <p>▲ For inop ALS, increase S-LOC 26L Cat C/D/E visibility to 1 3/8 SM.</p>					
D-ATIS	LAS VEGAS APP CON	LAS VEGAS TOWER		GND CON	CLNC DEL
132.4	125.025 379.15 (West) 119.775 282.2 (East)	118.75 257.8 (Rwy 1L/19R, 1R/19L) 119.9 257.8 (Rwy 8L/26R, 8R/26L)		121.1 270.8 E of 1R/19L 121.9 254.3 W of 1R/19L	118.0
					CPDLC



SW-4, 16 MAY 2024 to 13 JUN 2024

SW-4, 16 MAY 2024 to 13 JUN 2024