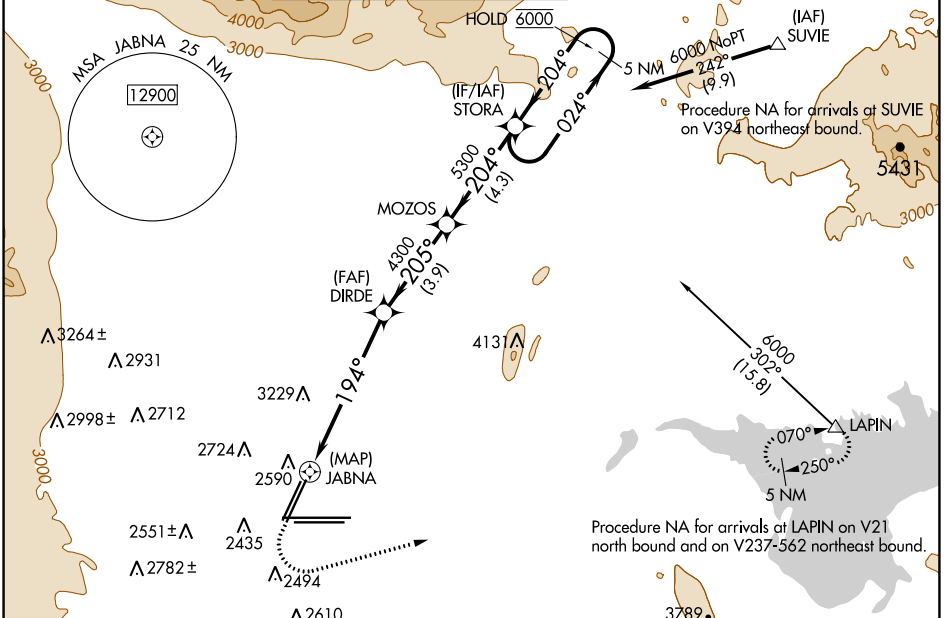


WAAS CH 45542 W19A	APP CRS 194°	Rwy Idg 8808 TDZE 2112 Apt Elev 2181
--------------------------	-----------------	---

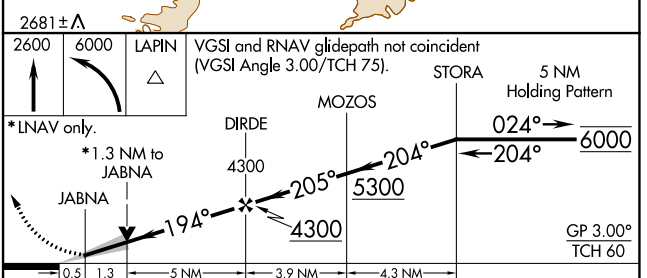
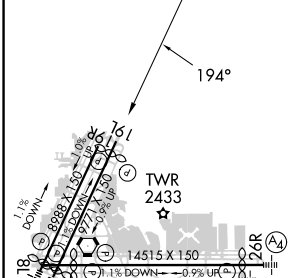
RNAV (GPS) Y RWY 19L

HARRY REID INTL (LAS)

RNP APCH.		MISSED APPROACH: Climb to 2600 then climbing left turn to 6000 direct LAPIN and hold.	
▼ For uncompensated Baro-VNAV systems, LNAV/VNAV NA below 0°C or above 54°C.			
D-ATIS 132.4	LAS VEGAS APP CON 125.025 379.15 (West) 119.775 282.2 (East)	LAS VEGAS TOWER 118.75 257.8 (Rwy 1L/19R, 1R/19L) 119.9 257.8 (Rwy 8L/26R, 8R/26L)	GND CON 121.1 270.8 E of 1R/19L 121.9 254.3 W of 1R/19L
			CLNC DEL 118.0
			CPDLC



ELEV 2181	D	TDZE 2112
-----------	----------	-----------



CATEGORY	A	B	C	D
LPV DA	2312-3/4		200 (200-3/4)	
LNAV/VNAV DA	2677-1 1/8		565 (500-1 1/8)	
LNAV MDA	2740-1 628 (600-1)		2740-1 3/4 628 (600-1 3/4)	
C CIRCLING	3020-1 1/4 839 (900-1 1/4)	3060-1 1/4 879 (900-1 1/4)	3100-2 3/4 919 (1000-2 3/4)	3540-3 1359 (1400-3)

SW-4, 16 MAY 2024 to 13 JUN 2024

SW-4, 16 MAY 2024 to 13 JUN 2024