

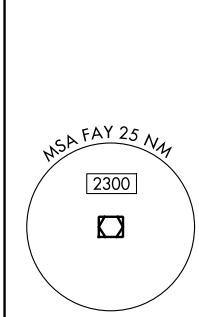
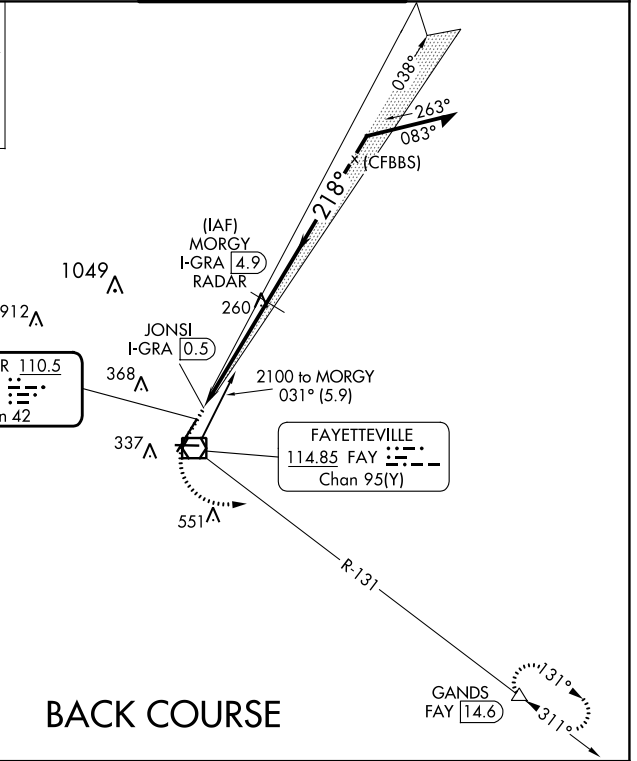
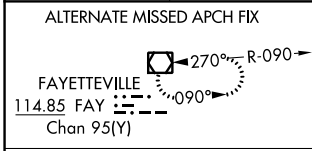
LOC/DME I-GR A <b>110.5</b> Chan <b>42</b>	APP CRS <b>218°</b>	Rwy Idg TDZE <b>180</b> Apt Elev <b>189</b>	<b>6413</b>
--	------------------------	---	-------------

# LOC BC RWY 22

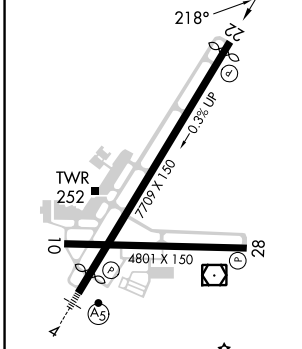
FAYETTEVILLE RGNL/GRANNIS FLD (FAY)

DME required.		MISSED APPROACH: Climb to 900 then climbing left turn to 3000 on heading 100° and on FAY VOR/DME R-131 to GANDS/FAY 14.6 DME and hold.	
---------------	--	--	--

ATIS <b>121.25</b>	FAYETTEVILLE APP CON <b>133.0 290.25</b>	FAYETTEVILLE TOWER <b>118.3 269.2</b>	GND CON <b>121.7 348.6</b>
-----------------------	---	--	-------------------------------



ELEV 189	<b>D</b> TDZE 180
----------	-------------------

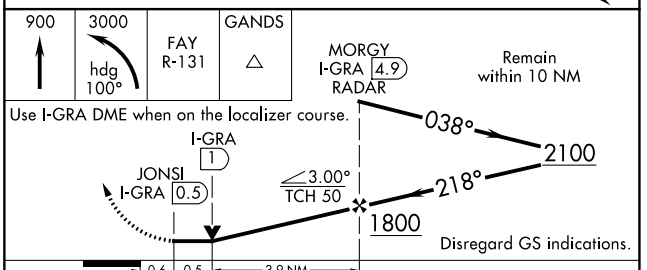


HIRL Rwy 4-22  
MIRL Rwy 10-28  
REIL Rwys 10, 28 and 22

FAF to MAP 4.4 NM

Knots	60	90	120	150	180
Min:Sec	4:24	2:56	2:12	1:46	1:28

## BACK COURSE



CATEGORY	A	B	C	D
S-22	560-1 380 (400-1)			
<b>C</b> CIRCLING	640-1 451 (500-1)	660-1 471 (500-1)	860-2 671 (700-2)	860-2 1/4 671 (700-2 1/4)

SE-2, 16 MAY 2024 to 13 JUN 2024

SE-2, 16 MAY 2024 to 13 JUN 2024