

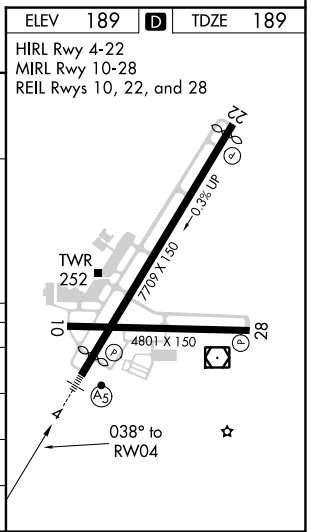
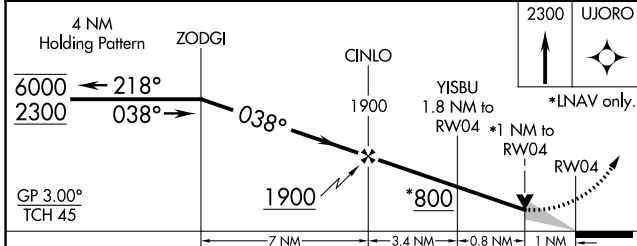
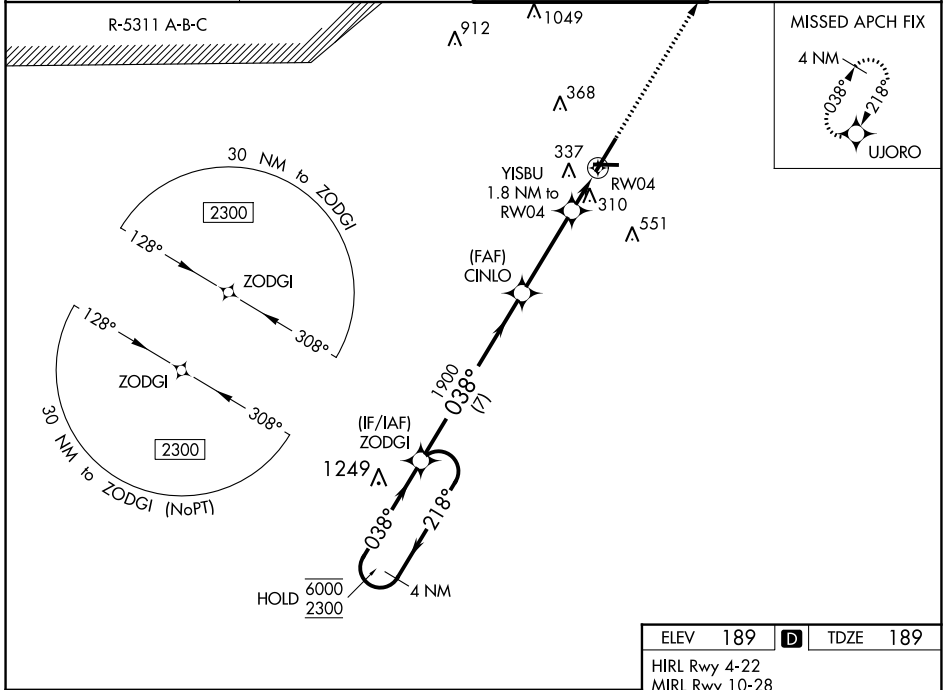
WAAS CH <b>50111</b> <b>W04A</b>	APP CRS <b>038°</b>	Rwy Idg TDZE Apt Elev	<b>6508</b> <b>189</b> <b>189</b>
--	------------------------	-----------------------------	---

# RNAV (GPS) RWY 4

FAYETTEVILLE RGNL/GRANNIS FLD (FAY)

RNP APCH.	MALSR	MISSED APPROACH: Climb to 2300 direct UJORO and hold.
For uncompensated Baro-VNAV systems, LNAV/VNAV NA below -10° C or above 54°C. # RVR 1800 authorized with use of FD or AP or HUD to DA.		

ATIS <b>121.25</b>	FAYETTEVILLE APP CON <b>133.0 290.25</b>	FAYETTEVILLE TOWER <b>118.3 269.2</b>	GND CON <b>121.7 348.6</b>
-----------------------	---	--	-------------------------------



CATEGORY	A	B	C	D
LPV DA #		389/24	200 (200-½)	
LNAV/VNAV DA		588/35	399 (400-⅙)	
LNAV MDA		560/24	371 (400-½)	
<b>C</b> CIRCLING	640-1 451 (500-1)	660-1 471 (500-1)	860-2 671 (700-2)	860-2¼ 671 (700-2¼)

SE-2, 16 MAY 2024 to 13 JUN 2024

SE-2, 16 MAY 2024 to 13 JUN 2024