

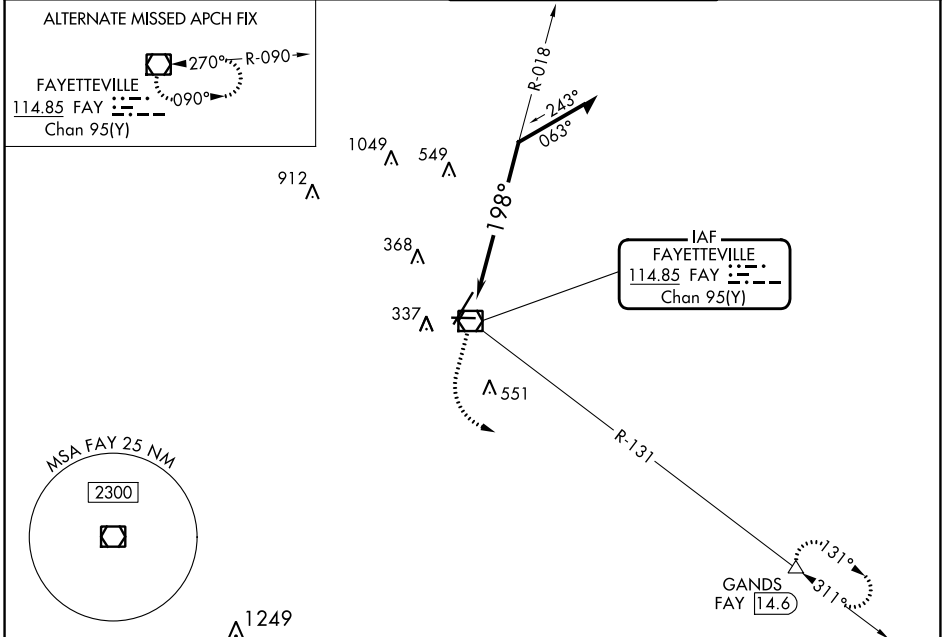
VOR/DME <b>FAY</b> <b>114.85</b> Chan <b>95(Y)</b>	APP CRS <b>198°</b>	Rwy Idg <b>6413</b> TDZE <b>180</b> Apt Elev <b>189</b>
--	------------------------	---

# VOR RWY 22

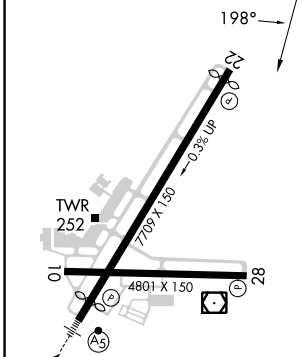
FAYETTEVILLE RGNL/GRANNIS FLD (FAY)

DME required.		MISSED APPROACH: Climb to 1300 then climbing left turn to 3000 on heading 100° and on FAY VOR/DME R-131 to GANDS/FAY 14.6 DME and hold.	
---------------	--	---	--

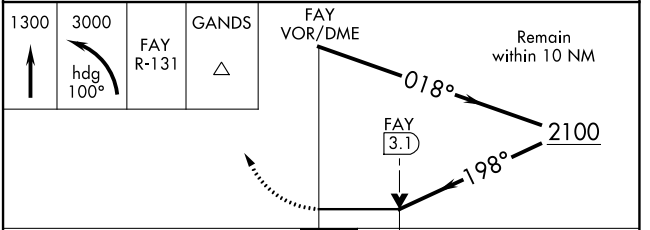
ATIS <b>121.25</b>	FAYETTEVILLE APP CON <b>133.0 290.25</b>	FAYETTEVILLE TOWER <b>118.3 269.2</b>	GND CON <b>121.7 348.6</b>
-----------------------	---	--	-------------------------------



ELEV 189	<b>D</b>	TDZE 180
----------	----------	----------



HIRL Rwy 4-22	MIRL Rwy 10-28	REIL Rwy 10, 28 and 22
---------------	----------------	------------------------



CATEGORY	A	B	C	D
S-22	900-1 720 (800-1)		900-2 720 (800-2)	
<b>C</b> CIRCLING	900-1 711 (800-1)		900-2 711 (800-2)	900-2 1/4 711 (800-2 1/4)

SE-2, 16 MAY 2024 to 13 JUN 2024

SE-2, 16 MAY 2024 to 13 JUN 2024