

WAAS CH <b>42601</b> <b>W06A</b>	APP CRS <b>056°</b>	Rwy Idg TDZE Apt Elev	<b>5504</b> <b>58</b> <b>67</b>
--	------------------------	-----------------------------	---------------------------------------

# RNAV (GPS) RWY 6

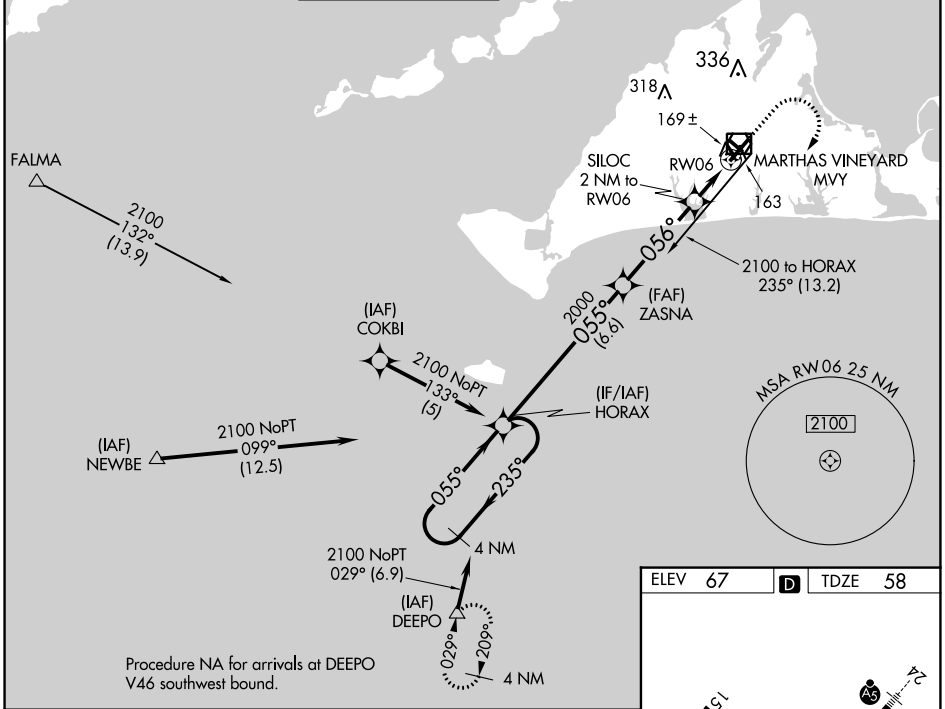
MARTHA'S VINEYARD (MVY)

RNP APCH.

**▼** Rwy 6 helicopter visibility reduction below ¼ SM NA. VDP and Baro-VNAV NA when using Hyannis altimeter setting. For uncompensated Baro-VNAV systems, LNAV/VNAV NA below -15°C or above 43°C. When local altimeter setting not received, use Hyannis altimeter setting and increase LPV DA to 362 feet and all Cats visibility by ¼ SM, increase LNAV/VNAV DA to 408 feet and all Cats visibility ½ SM; increase all MDAs 60 feet and Cats C and D visibility ¼ SM. Circling Rwy 15 NA at night.

**MISSED APPROACH:**  
Climb to 800 then climbing right turn to 3000 direct DEEPO and hold.

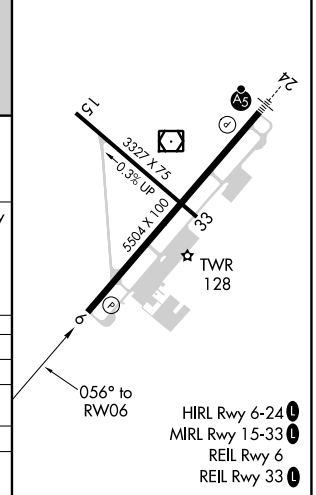
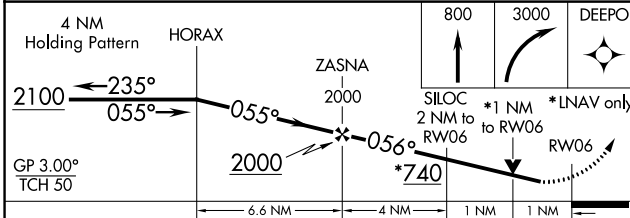
ATIS <b>126.25</b>	BOSTON APP CON * <b>133.75</b>	VINEYARD TOWER * <b>121.4 (CTAF) 0</b>	GND CON <b>124.35</b>	CLNC DEL <b>124.35</b>	CLNC DEL <b>119.7</b> (When twr closed)	UNICOM <b>122.95</b>
-----------------------	-----------------------------------	---	--------------------------	---------------------------	---	-------------------------



NE-1, 16 MAY 2024 to 13 JUN 2024

NE-1, 16 MAY 2024 to 13 JUN 2024

ELEV 67	<b>D</b>	TDZE 58
---------	----------	---------



CATEGORY	A	B	C	D
LPV DA		308-¾	250 (300-¾)	
LNAV/VNAV DA		354-1	296 (300-1)	
LNAV MDA		420-1	362 (400-1)	
<b>C</b> CIRCLING	500-1	540-1	700-1¾	780-2¼
	433 (500-1)	473 (500-1)	633 (700-1¾)	713 (800-2¼)