


WAAS CH <b>70401</b> <b>W04A</b>	APP CRS <b>046°</b>	Rwy Idg TDZE Apt Elev	<b>6604</b> <b>969</b> <b>979</b>
--	------------------------	-----------------------------	---

# RNAV (GPS) RWY 4

BLUE GRASS (LEX)

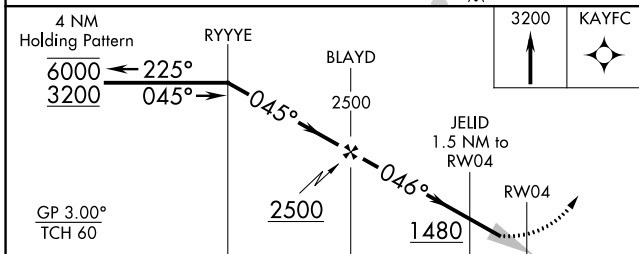
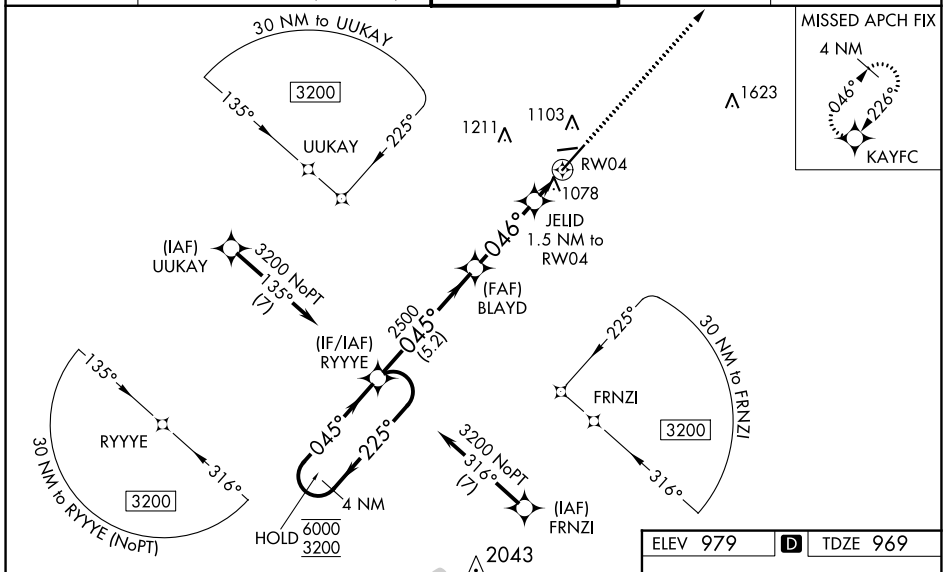
RNP APCH - GPS.

⚠ For uncompensated Baro-VNAV systems, LNAV/VNAV NA below -16°C or above 54°C. For inop ALS, increase LNAV/VNAV all Cats visibility to RVR 5500, and LNAV Cats C and D visibility to RVR 5500. When local altimeter setting not received, use Frankfort altimeter setting; increase LPV DA to 1231 feet and all visibilities to RVR 2000; increase LNAV/VNAV DA to 1420 feet and all visibilities to RVR 4000; increase all MDAs 80 feet and LNAV visibility Cat C/D to RVR 4500 and Circling visibility Cat C/D ¼ SM. Baro-VNAV NA when using Frankfort altimeter setting.

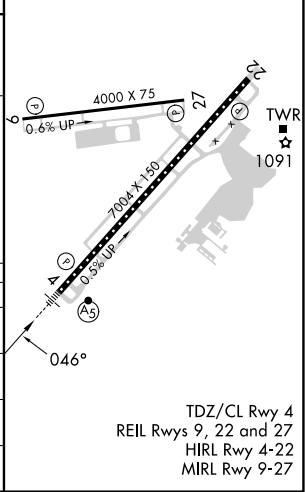
MALSR 

MISSED APPROACH:  
Climb to 3200 direct KAYFC and hold, continue climb-in-hold to 3200.

ATIS <b>126.3</b>	LEXINGTON APP CON <b>120.15 259.3</b> (040°-220°) <b>120.75 298.9</b> (221°-039°)	LEXINGTON TOWER <b>119.1 257.8</b>	GND CON <b>121.9</b>	CLNC DEL <b>132.35</b>
----------------------	---	---------------------------------------	-------------------------	---------------------------



ELEV 979	<b>D</b>	TDZE 969
----------	----------	----------



CATEGORY	A	B	C	D
LPV DA		1169/18	200 (200-½)	
LNAV/VNAV DA		1340/35	371 (400-¾)	
LNAV MDA	1340/24	371 (400-½)	1340/35	371 (400-¾)
<b>C</b> CIRCLING	1420-1 441 (500-1)	1440-1 461 (500-1)	1520-1½ 541 (600-1½)	1600-2 621 (700-2)

TDZ/CL Rwy 4  
REIL Rwys 9, 22 and 27  
HIRL Rwy 4-22  
MIRL Rwy 9-27

SE-1, 16 MAY 2024 to 13 JUN 2024

SE-1, 16 MAY 2024 to 13 JUN 2024