

WAAS CH 86918 W09A	APP CRS 087°	Rwy Idg TDZE Apt Elev	4000 967 979
--	------------------------	-----------------------------	---

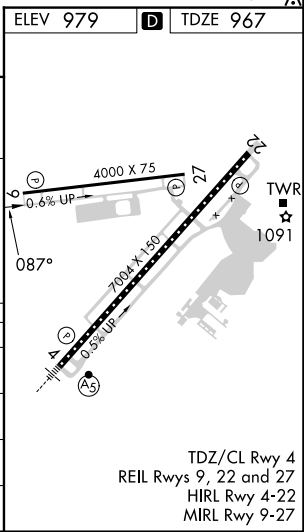
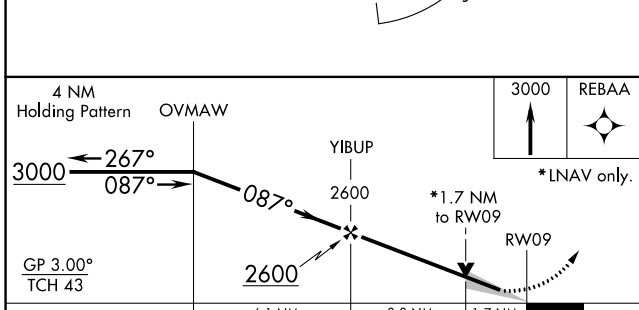
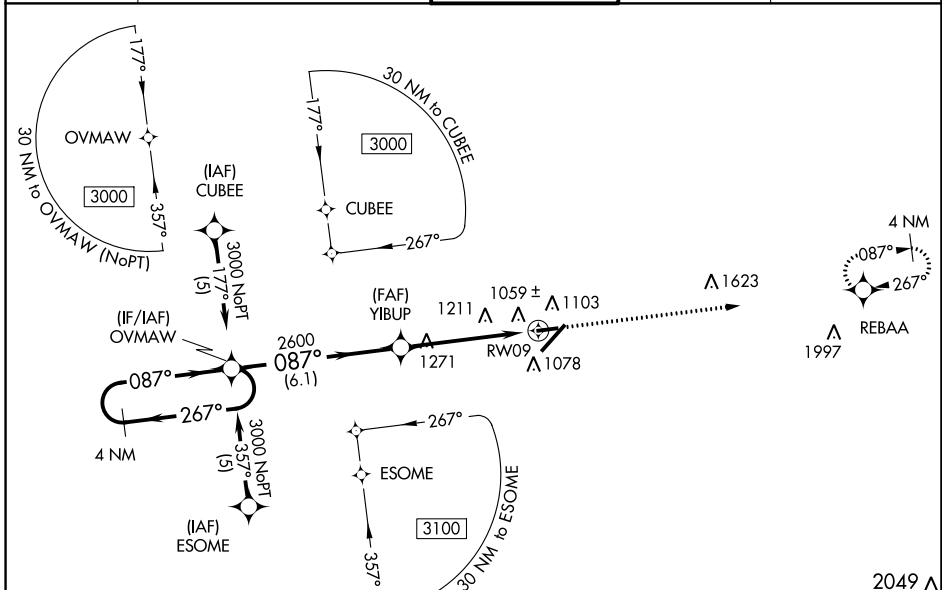
RNAV (GPS) RWY 9

BLUE GRASS (LEX)

⚠ Baro-VNAV NA when using Frankfort altimeter setting. For uncompensated Baro-VNAV systems, LNAV/VNAV NA below -16°C (4°F) or above 54°C (130°F).
⚠ DME/DME RNP-0.3 NA. VDP NA with Frankfort altimeter setting. When local altimeter setting not received, use Frankfort altimeter setting: increase LPV DA to 1279 feet and all visibilities ¼ SM; increase LNAV/VNAV DA to 1421 feet and all visibilities ¼ SM; increase all MDAs 80 feet and visibility Cats C and D ¼ SM.

MISSED APPROACH: Climb to 3000 direct REBAA and hold.

ATIS 126.3	LEXINGTON APP CON 120.15 259.3 (040°-220°) 120.75 298.9 (221°-039°)	LEXINGTON TOWER 119.1 257.8	GND CON 121.9	CLNC DEL 132.35
----------------------	---	---------------------------------------	-------------------------	---------------------------



CATEGORY	A	B	C	D
LPV DA		1217-1	250 (300-1)	
LNAV/VNAV DA		1359-1½	392 (400-1½)	
LNAV MDA	1540-1	573 (600-1)	1540-1½ 573 (600-1½)	1540-1¾ 573 (600-1¾)
C CIRCLING	1540-1	561 (600-1)	1540-1½ 561 (600-1½)	1600-2 621 (700-2)