

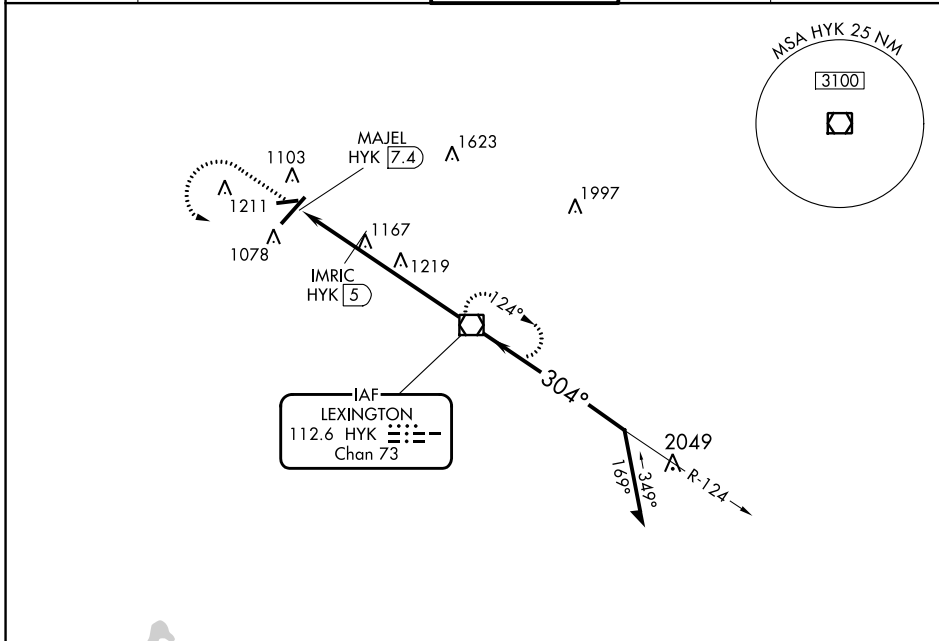
VOR/DME HYK 112.6 Chan 73	APP CRS 304°	Rwy Idg TDZE N/A N/A Apt Elev 979
---	------------------------	--

VOR-A
BLUE GRASS (LEX)

⚠ When local altimeter setting not received, use Frankfort altimeter setting and increase all MDAs 80 feet and visibility Cats C and D ¼ SM.

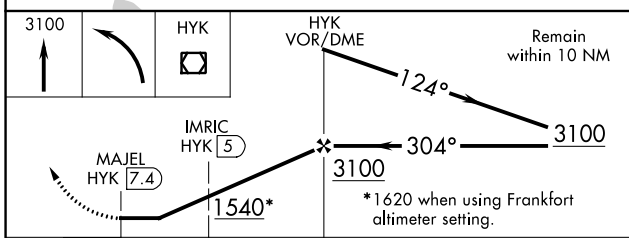
MISSED APPROACH: Climb to 3100 then left turn direct HYK VOR/DME and hold.

ATIS 126.3	LEXINGTON APP CON 120.15 259.3 120.75 298.9 (040°-220°) (221°-039°)	LEXINGTON TOWER 119.1 257.8	GND CON 121.9	CLNC DEL 132.35
----------------------	--	---------------------------------------	-------------------------	---------------------------



SE-1, 16 MAY 2024 to 13 JUN 2024

SE-1, 16 MAY 2024 to 13 JUN 2024



CATEGORY	A	B	C	D
C CIRCLING	1540-1 561 (600-1)	1540-1½ 561 (600-1½)	1600-2 621 (700-2)	
IMRIC DME FIX MINIMUMS				
C CIRCLING	1460-1 481 (500-1)	1520-1½ 541 (600-1½)	1600-2 621 (700-2)	

