

VORTAC ENI <b>112.3</b> Chan 70	APP CRS <b>022°</b>	Rwy Idg TDZE Apt Elev <b>N/A</b> <b>N/A</b> <b>617</b>
---------------------------------------	------------------------	---

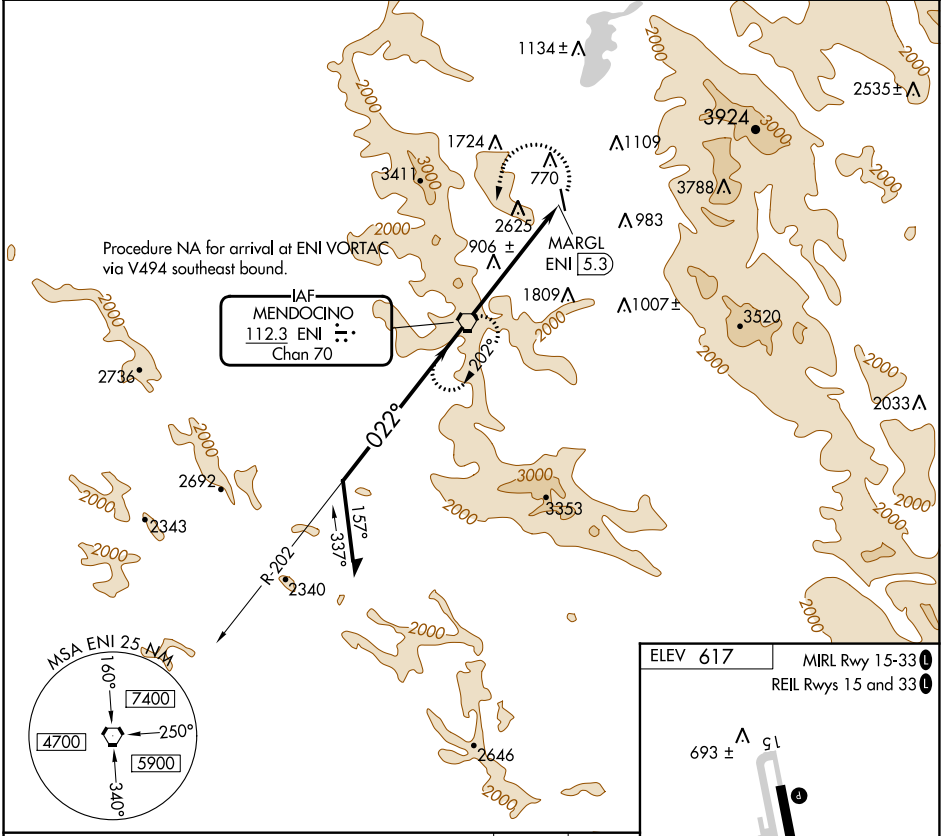
# VOR-A

UKIAH MUNI (UKI)

**⚠** Circling NA west of Rwy 15-33.  
When local altimeter setting not received, procedure NA.

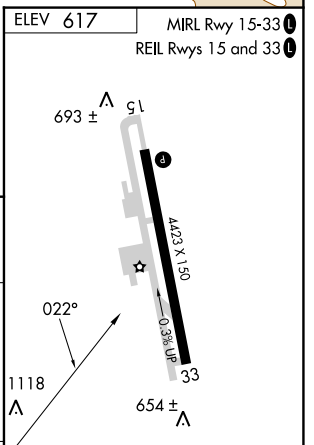
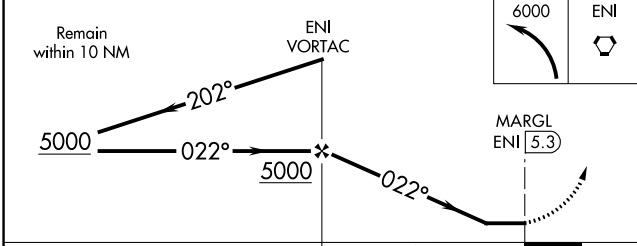
MISSED APPROACH: Climbing left turn to 6000 direct ENI VORTAC and hold, continue climb-in-hold to 6000.

ASOS <b>119.275</b>	OAKLAND CENTER <b>127.8 353.5</b>	UNICOM <b>123.0</b> (CTAF) <b>①</b>
------------------------	--------------------------------------	--



SW-2, 16 MAY 2024 to 13 JUN 2024

SW-2, 16 MAY 2024 to 13 JUN 2024



CATEGORY	A	B	C	D	FAF to MAP 5.3 NM					
CIRCLING	3400-1¼ 2783 (2800-1¼)	3400-1½ 2783 (2800-1½)	3400-3	2783 (2800-3)	Knots	60	90	120	150	180
					Min:Sec	5:18	3:32	2:39	2:07	1:46