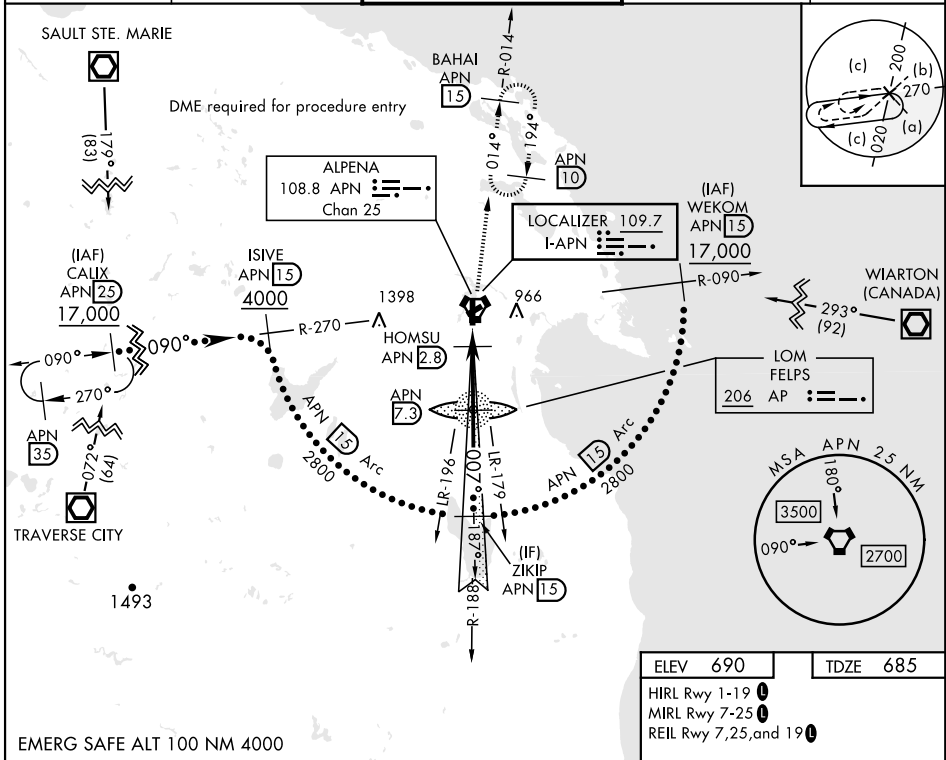


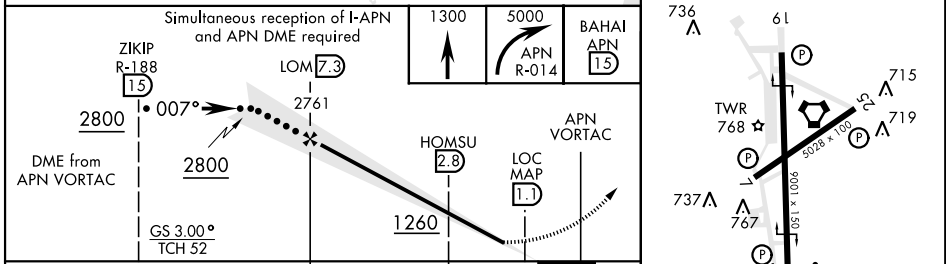
<b>LOC I-APN</b> 109.7	<b>APCH CRS</b> 007°	<b>Rwy Idg</b> <b>9001</b> <b>TDZE</b> <b>685</b> <b>Arprt Elev</b> <b>690</b>	<b>AL-718 [USAF]</b>	<b>ALPENA COUNTY RGNL (KAPN)</b>
DME required.		MALS R	MISSED APPROACH: Climb to 1300, then climbing right turn to 5000 on APN VORTAC R-014 to BAHAI/15 DME and hold. Continue climb-in-hold to 5000.	
* When ALS inop, increase vis to $\frac{3}{4}$ mile. ** When ALS inop, increase vis to 1 $\frac{1}{2}$ miles.				

<b>ATIS *</b> 120.675 327.05	<b>ALPENA APP CON</b> 128.425 379.3	<b>ALPENA TOWER *</b> 121.35 (CTAF) 0 318.1	<b>GND CON</b> 121.9 275.8	<b>UNICOM</b> 122.95
---------------------------------	--	--	-------------------------------	-------------------------



EC-1, 16 MAY 2024 TO 13 JUN 2024

EC-1, 16 MAY 2024 TO 13 JUN 2024



<b>CATEGORY</b>	C	D	E
<b>S-ILS 1*</b>	885- $\frac{1}{2}$	200	(200- $\frac{1}{2}$ )
<b>S-LOC 1**</b>	1140- $\frac{7}{8}$	455	(500- $\frac{7}{8}$ )
<b>CIRCLING</b>	1220-1 $\frac{1}{2}$ 530 (600-1 $\frac{1}{2}$ )	1280-2 590 (600-2)	1320-2 $\frac{1}{4}$ 630 (700-2 $\frac{1}{4}$ )

<b>FAF to MAP 6.3 NM</b>					
<b>Knots</b>	120	140	160	180	200
<b>Min:Sec</b>	3:09	2:42	2:22	2:06	1:53