

ALPENA, MICHIGAN

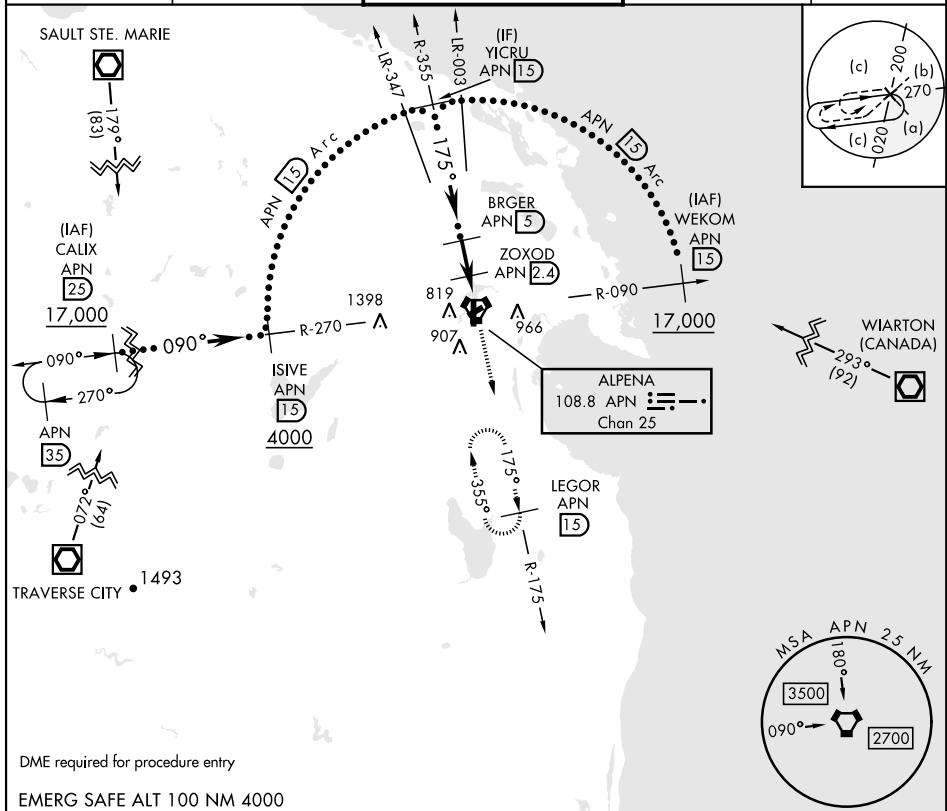
HI-TACAN RWY 19

VORTAC APN 108.8 Chan 25	APCH CRS 175°	Rwy Idg TDZE Arpt Elev 9001 683 690	AL-718 [USAF]	ALPENA COUNTY RGNL (KAPN)
--	-------------------------	---	---------------	---------------------------

DME required.

MISSED APPROACH: Climb to 5000 on APN R-175 to LEGOR (15 DME) and hold, continue climb in hold to 5000.

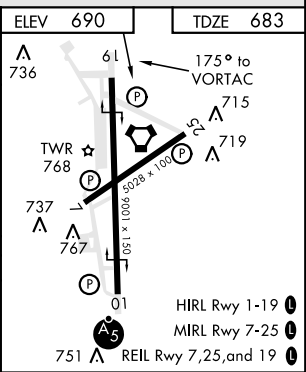
ATIS ★ 120.675 327.05	ALPENA APP CON 128.425 379.3	ALPENA TOWER ★ 121.35 (CTAF) 0 318.1	GND CON 121.9 275.8	UNICOM 122.95
---------------------------------	--	--	-------------------------------	-------------------------



EC-1, 16 MAY 2024 to 13 JUN 2024

EC-1, 16 MAY 2024 to 13 JUN 2024

DME required for procedure entry		EMERG SAFE ALT 100 NM 4000		VGS1 and descent angles not coincident (VGS1 Angle 3.00/TCH 39)		ELEV 690		TDZE 683	
YICRU R-355 15 2800		BRGER 5 2300		ZOXOD 2.4 1380		JUDBI 1.8 1380		VORTAC	
3.23° TCH 55		2.6 NM		1.4 NM		6 NM		LEGOR APN 15 5000 APN R-175	
CATEGORY	C	D	E						
S-19	1140-1 3/8	457 (500-1 3/8)							
CIRCLING	1220-1 1/2 530 (600-1 1/2)	1280-2 590 (600-2)	1320-2 1/4 630 (700-2 1/4)						



HI-TACAN RWY 19