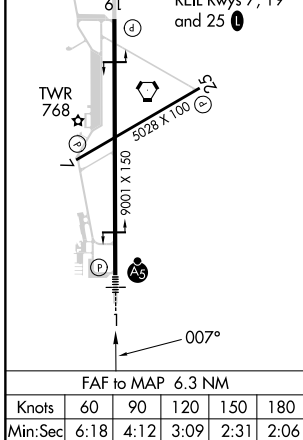
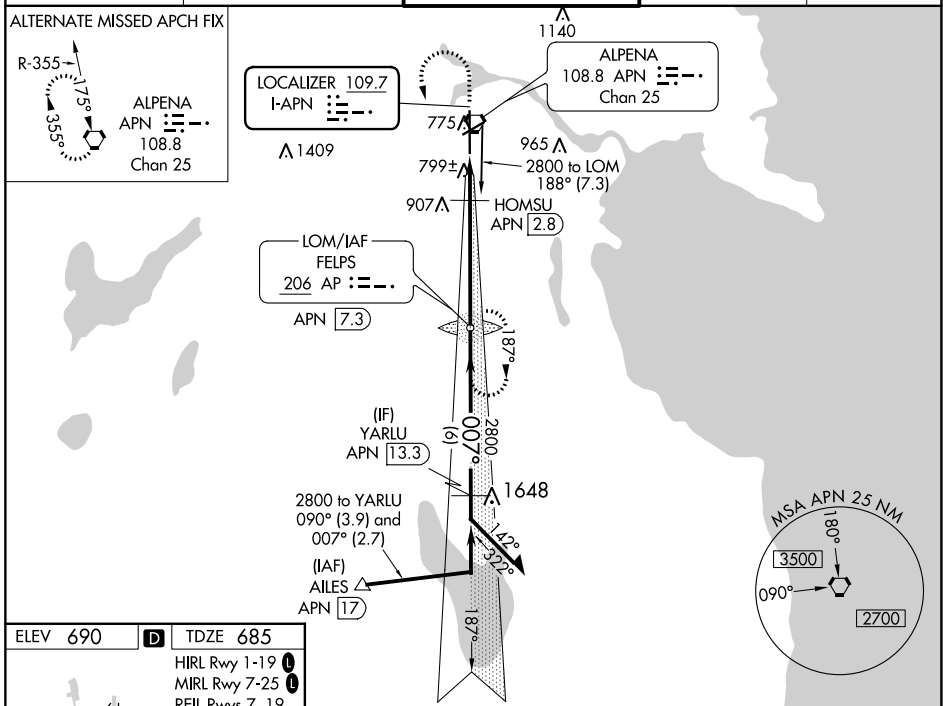


LOC I-APN 109.7	APP CRS 007°	Rwy Idg TDZE Apt Elev	9001 685 690
---------------------------	------------------------	-----------------------------	-----------------------------------------

ILS or LOC RWY 1
ALPENA COUNTY RGNL (APN)

ADF required.	MALSR 	MISSED APPROACH: Climb to 1100 then climbing left turn to 2800 direct AP LOM and hold.
 For inop ALS, increase S-LOC 1 Cat C/D visibility to 1 1/2 SM.		

ATIS 120.675 327.05	ALPENA APP CON * 128.425 379.3	ALPENA TOWER * 121.35 (CTAF) 318.1	GND CON 121.9 275.8	UNICOM 122.95
-------------------------------	------------------------------------------	----------------------------------------------	-------------------------------	-------------------------



1100	2800	AP	Remain within 10 NM	
*LOC only.	HOMSU APN 2.8	FELPS LOM APN 7.3	2761	187°
	APN 1.1	1260*	2800	007°
	1.7 NM	4.6 NM	2800	GS 3.00° TCH 52
CATEGORY	A	B	C	D
S-ILS 1	885-1/2 200 (200-1/2)			
S-LOC 1	1260-1/2	575 (600-1/2)	1260-1 1/4	575 (600-1 1/4)
HOMSU FIX MINIMUMS				
S-LOC 1	1140-1/2 455 (500-1/2)			

EC-1, 16 MAY 2024 to 13 JUN 2024

EC-1, 16 MAY 2024 to 13 JUN 2024