

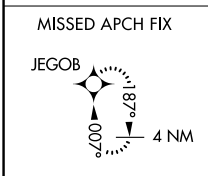
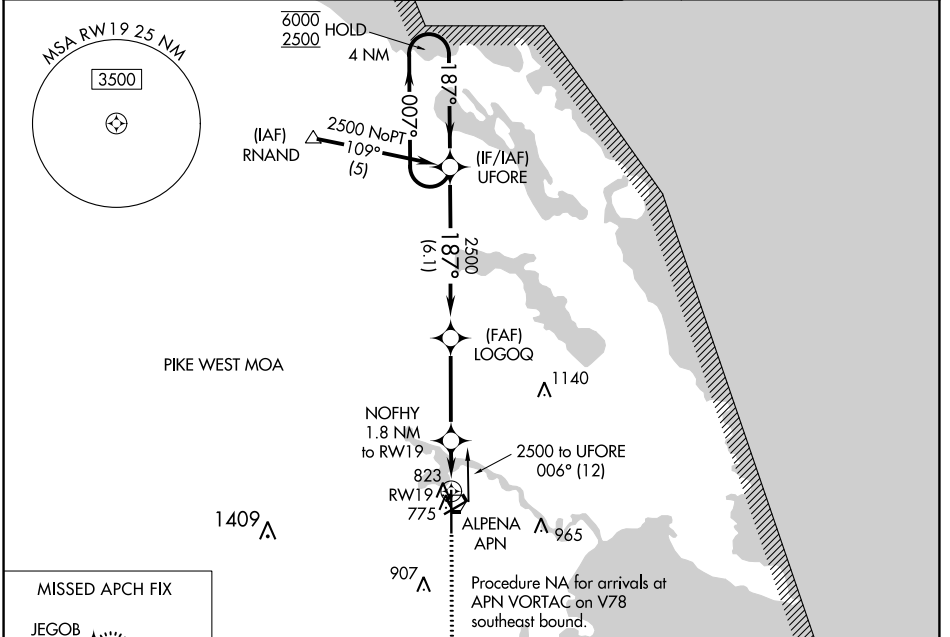
WAAS CH <b>53717</b> <b>W19A</b>	APP CRS <b>187°</b>	Rwy Idg TDZE Apt Elev	<b>9001</b> <b>683</b> <b>690</b>
--	------------------------	-----------------------------	---

# RNAV (GPS) RWY 19

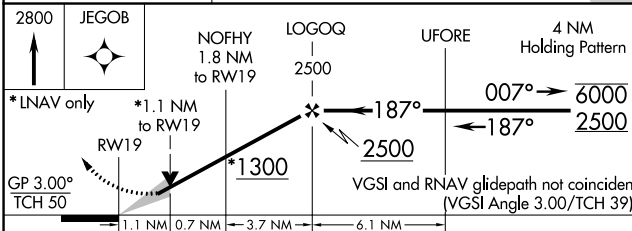
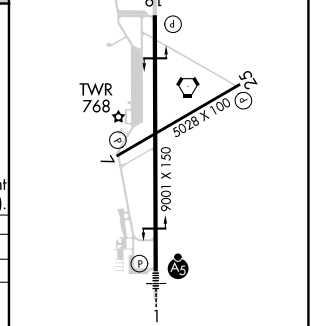
ALPENA COUNTY RGNL (APN)

RNP APCH.		For uncompensated Baro-VNAV systems, LNAV/VNAV NA below -16°C or above 54°C.		MISSED APPROACH: Climb to 2800 direct JEGOB and hold.	
-----------	--	--	--	---	--

ATIS <b>120.675 327.05</b>	ALPENA APP CON * <b>128.425 379.3</b>	ALPENA TOWER * <b>121.35 (CTAF) 0 318.1</b>	GND CON <b>121.9 275.8</b>	UNICOM <b>122.95</b>
-------------------------------	--	--	-------------------------------	-------------------------



ELEV 690	TDZE 683
----------	----------



CATEGORY	A	B	C	D
LPV DA	933-3/4		250 (300-3/4)	
LNAV/VNAV DA	1020-1 1/4		337 (400-1 1/4)	
LNAV MDA	1080-1 397 (400-1)		1080-1 1/8 397 (400-1 1/8)	
CIRCLING	1140-1 450 (500-1)		1220-1 1/2 530 (600-1 1/2) 1280-2 590 (600-2)	

HIRL Rwy 1-19  
MIRL Rwy 7-25  
REIL Rws 7, 19 and 25

EC-1, 16 MAY 2024 to 13 JUN 2024

EC-1, 16 MAY 2024 to 13 JUN 2024