


ILS or LOC RWY 25

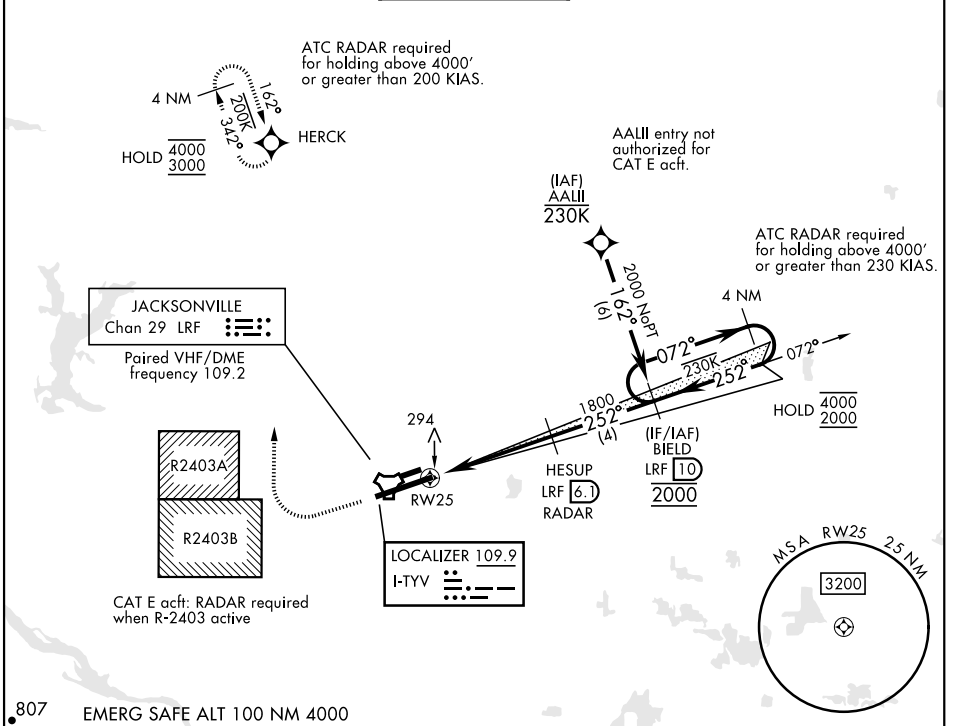
LOC I-TYV 109.9	APCH CRS 252°	Rwy ldg 12,007 TDZE 301 Arpt Elev 312
---------------------------	-------------------------	--

AL-738 [USAF]

LITTLE ROCK AFB (KLRF)

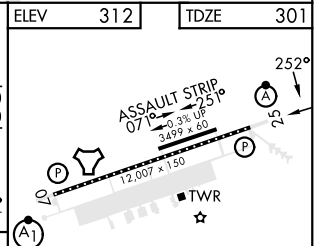
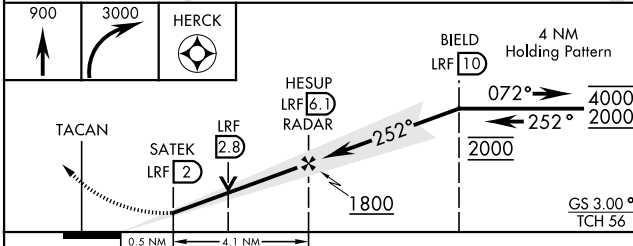
<p>RNP APCH: RNAV1 - GPS or RADAR required.</p> <p>▼ *When TDZL/CL inop, increase RVR to 24. RVR 18 still authorized with use of FD, AP, or HUD to DA. When ALS inop, increase RVR to 40, vis to ¾ mile. ** When ALS inop, increase CAT AB RVR to 55, vis to 1 mile, CAT CDE vis to 1½ miles. *** Circling not authorized S of Rwy 7-25.</p>		<p>ALS-F-2</p> 	<p>MISSED APPROACH: Climb to 900 then climbing right turn to 3000 direct HERCK and hold as published.</p> <p>ALTERNATE MISSED APPROACH: Climbing to 3000 fly runway heading until LRF 2 DME, then turn right heading 360°, EFC from ATC.</p>
--	--	--	--

ATIS ★ 119.175 251.1	APP CON 119.5 306.2	TOWER 120.6 269.075	GND CON 132.8 275.8	CLNC DEL 253.5
--------------------------------	-------------------------------	-------------------------------	-------------------------------	--------------------------



SC-1, 16 MAY 2024 to 13 JUN 2024

SC-1, 16 MAY 2024 to 13 JUN 2024



CATEGORY	A	B	C	D	E
S-ILS 25*	501/18		200	(200-½)	
S-LOC 25**	760/24	459 (500-½)	760/45	459	(500-¾)
CIRCLING ***	780-1 468 (500-1)	920-1 608 (700-1)	920-1¼ 608 (700-1¾)	1040-2¼ 728 (800-2¼)	1040-2½ 728 (800-2½)

ELEV	312	TDZE	301
HRL Rwy 07-25 TDZL/CL Rwy 25			
FAF to MAP 4.1 NM			
Knots	60	90	120 150 180
Min:Sec	4:06	2:44	2:03 1:38 1:22

ILS or LOC RWY 25