

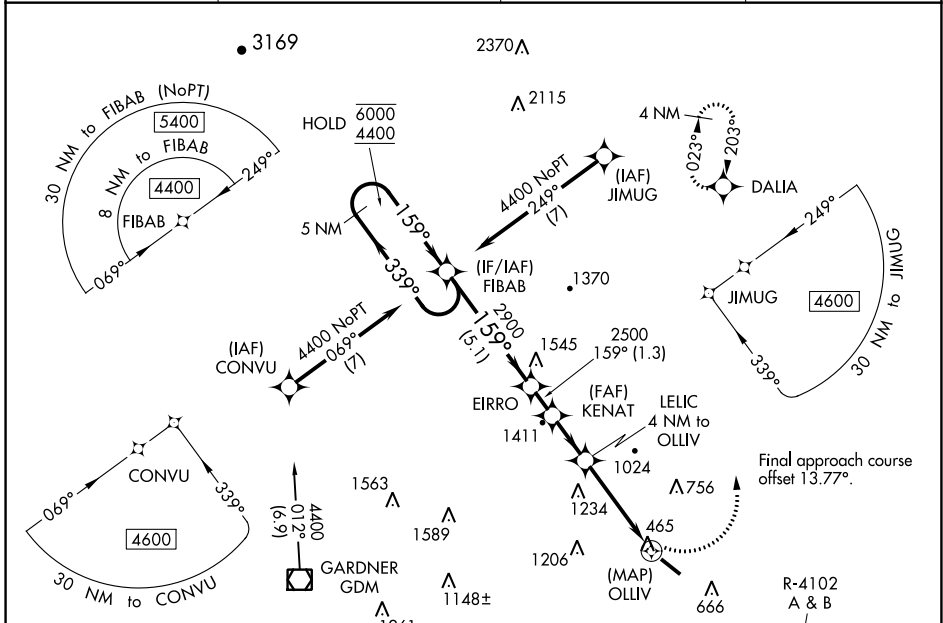
APP CRS	Rwy Idg	4538
159°	TDZE	344
	Apt Elev	345

RNAV (GPS) RWY 14

FITCHBURG MUNI (FIT)

RNP APCH.	MISSED APPROACH: Climbing left turn to 3500 direct DALIA and hold.
<p>▼ Rwy 14 helicopter visibility reduction below ¾ SM NA. ▲ Circling NA southwest of Rwy 14-32 at night. ❄️ -22°C</p>	

ASOS 135.175	BOSTON APP CON 124.4 279.6	UNICOM 122.7 (CTAF)	123.0 0
------------------------	--------------------------------------	-------------------------------	-----------------------



NE-1, 16 MAY 2024 to 13 JUN 2024

NE-1, 16 MAY 2024 to 13 JUN 2024

ELEV 345	D	TDZE 344
----------	----------	----------

Procedure NA for arrival on GDM VOR/DME airway radials 339 CW 042.

MIRL Rwy 14-32 **0**
 REL Rwy 14 and 32 **0**

	5 NM Holding Pattern	Visual Segment - Obstacles.	3500	DALIA
	6000 ← 339°	EIRRO	3500	DALIA
	4400 → 159°	KENAT	3500	DALIA
		LELIC 4 NM to OLLIV	3500	DALIA
		OLLIV	3500	DALIA
		2.7 NM to OLLIV	3500	DALIA
		OLLIV	3500	DALIA
		0.5	3500	DALIA
CATEGORY	A	B	C	D
LNAV MDA	1420-1¼ 1076 (1100-1¼)	1420-1½ 1076 (1100-1½)	1420-3 1076 (1100-3)	NA
C CIRCLING	1420-1¼ 1075 (1100-1¼)	1420-1½ 1075 (1100-1½)	1520-3 1175 (1200-3)	NA