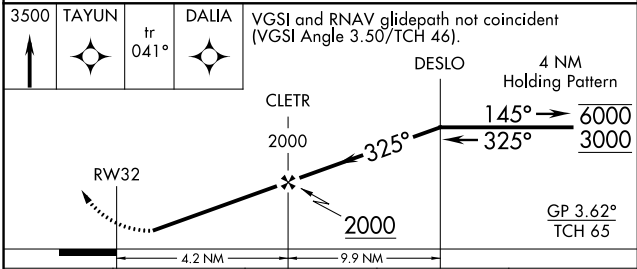
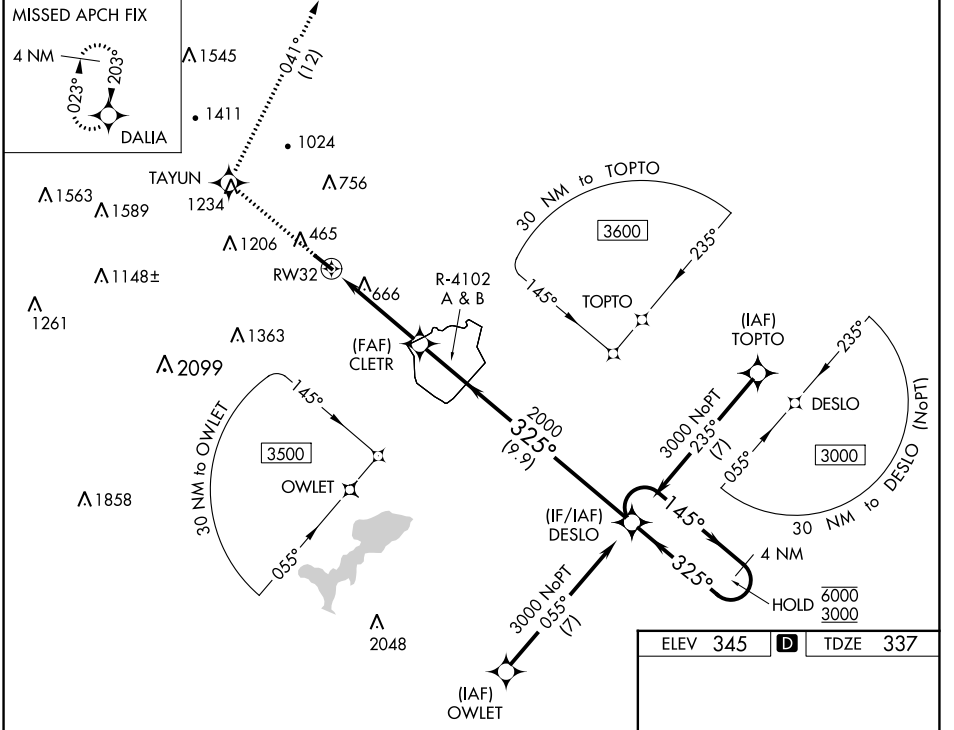


WAAS CH <b>48944</b> <b>W32A</b>	APP CRS <b>325°</b>	Rwy Idg <b>4538</b> TDZE <b>337</b> Apt Elev <b>345</b>
--	------------------------	---

# RNAV (GPS) RWY 32

FITCHBURG MUNI (FIT)

RNP APCH - GPS.		MISSED APPROACH: Climb to 3500 direct TAYUN and on track 041° to DALIA and hold.	
ASOS <b>135.175</b>	BOSTON APP CON <b>124.4 279.6</b>	UNICOM <b>122.7</b> (CTAF)	<b>123.0</b>



ELEV <b>345</b>		TDZE <b>337</b>
-----------------	--	-----------------

MIRL Rwy 14-32   
REIL Rwy 14 and 32

NE-1, 16 MAY 2024 to 13 JUN 2024

NE-1, 16 MAY 2024 to 13 JUN 2024