

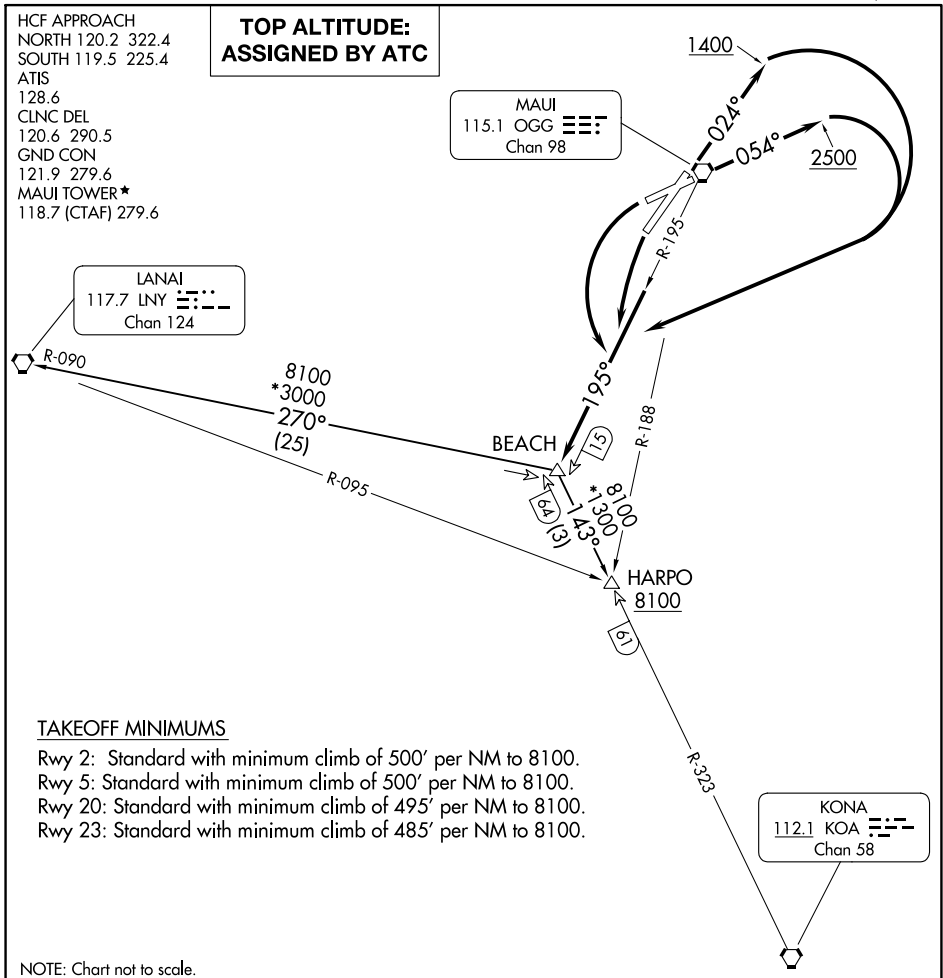
HCF APPROACH
NORTH 120.2 322.4
SOUTH 119.5 225.4
ATIS
128.6
CLNC DEL
120.6 290.5
GND CON
121.9 279.6
MAUI TOWER*
118.7 (CTAF) 279.6

**TOP ALTITUDE:
ASSIGNED BY ATC**

MAUI
115.1 OGG
Chan 98

LANAI
117.7 LNY
Chan 124

KONA
112.1 KOA
Chan 58



TAKEOFF MINIMUMS

- Rwy 2: Standard with minimum climb of 500' per NM to 8100.
- Rwy 5: Standard with minimum climb of 500' per NM to 8100.
- Rwy 20: Standard with minimum climb of 495' per NM to 8100.
- Rwy 23: Standard with minimum climb of 485' per NM to 8100.

NOTE: Chart not to scale.

DEPARTURE ROUTE DESCRIPTION

TAKEOFF RUNWAY 2: Climb on heading 024° to 1400 then climbing right turn via OGG R-195 to BEACH INT.

TAKEOFF RUNWAY 5: Climb on heading 054° to 2500 then climbing right turn via OGG R-195 to BEACH INT.

TAKEOFF RUNWAYS 20, 23: Climbing left turn via OGG R-195 to BEACH INT.

HARPO TRANSITION (BEACH4.HARPO): From over BEACH INT on KOA R-323 to HARPO INT.

LANAI TRANSITION (BEACH4.LNY): From over BEACH INT on LNY R-090 to LNY VORTAC.

PAC, 16 MAY 2024 to 11 JUL 2024

PAC, 16 MAY 2024 to 11 JUL 2024