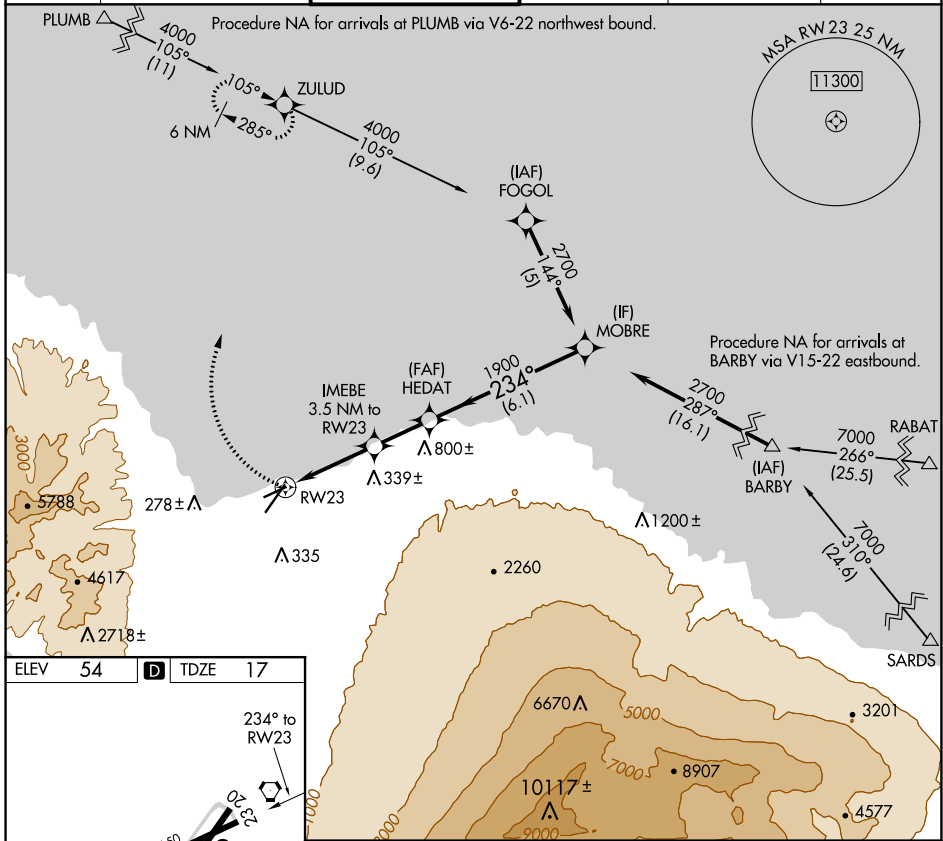


APP CRS <b>234°</b>	Rwy Idg <b>4980</b>
	TDZE <b>17</b>
	Apt Elev <b>54</b>

# RNAV (GPS) RWY 23

KAHALUI (OGG)(PHOG)

<b>▽</b>	DME/DME RNP-0.3 NA.		MISSED APPROACH: Climbing right turn to 4000 direct ZULUD and hold, continue climb-in-hold to 4000.		
ATIS <b>128.6</b>	HCF APPROACH <b>120.2 322.4 (NORTH)</b> <b>119.5 225.4 (SOUTH)</b>	MAUI TOWER ★ <b>118.7 (CTAF) 0 279.6</b>	GND CON <b>121.9 279.6</b>	CLNC DEL <b>120.6 290.5</b>	UNICOM <b>122.95</b>



PAC, 16 MAY 2024 to 11 JUL 2024

PAC, 16 MAY 2024 to 11 JUL 2024

ELEV 54	<b>D</b>	TDZE 17
---------	----------	---------

HIRL Rwy 2-20 **0**  
MIRL Rwy 5-23 **0**

4000	ZULUD	HEDAT	MOBRE	
	IMEBE 3.5 NM to RW23	1900	2700	
		1200	Procedure Turn NA	
	3.5 NM	2.2 NM	6.1 NM	
CATEGORY	A	B	C	D
LNAV MDA	460-1	443 (500-1)	460-1¼ 443 (500-1¼)	460-1½ 443 (500-1½)
<b>C</b> CIRCLING	500-1 446 (500-1)	620-1 566 (600-1)	780-2 726 (800-2)	1180-3 1126 (1200-3)