

| | | |
|-------------|----------|-------------|
| APP CRS | Rwy Idg | 6995 |
| 024° | TDZE | 55 |
| | Apt Elev | 55 |

RNAV (RNP) Z RWY 2

KAHULUI (OGG)(PHOG)

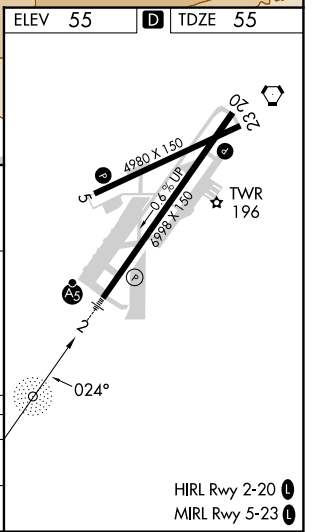
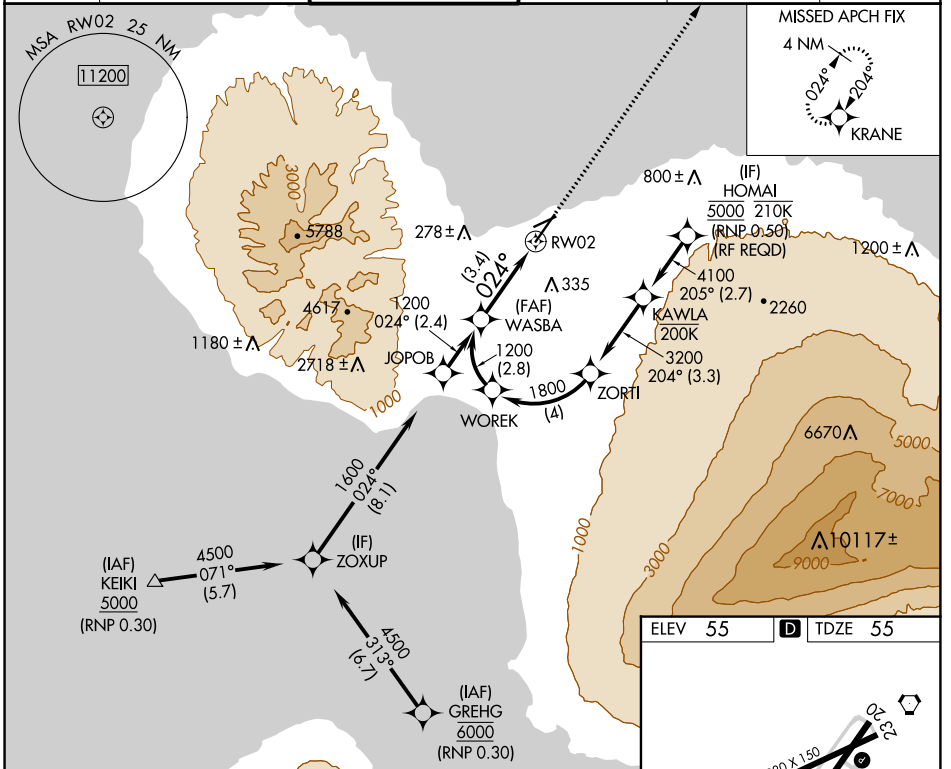
RNP AR APCH - GPS.

▼ For uncompensated Baro-VNAV systems, procedure NA below 14°C or above 54° C. When local altimeter setting not received, procedure NA. For inop ALS, increase RNP 0.30 all Cats visibility to 7/8 SM.


MALSR 

MISSED APPROACH: Climb to 3000 direct KRANE and hold.

| | | | | | |
|--------------|--|------------------------------------|--------------------|--------------------|---------------|
| ATIS | HCF APPROACH | MAUI TOWER ★ | GND CON | CLNC DEL | UNICOM |
| 128.6 | 120.2 322.4 (NORTH) 119.5 225.4 (SOUTH) | 118.7 (CTAF) 0 279.6 | 121.9 279.6 | 120.6 290.5 | 122.95 |



WASBA VGSi and RNAV glidepath not coincident (VGSi Angle 3.00/TCH 77).

3000 KRANE 

See planview for multiple IF locations.

GP 3.00° TCH 62

024° RWY 2

| | | | | |
|-------------|---|---------|---------------|---|
| CATEGORY | A | B | C | D |
| RNP 0.30 DA | | 394-1/2 | 339 (400-1/2) | |

AUTHORIZATION REQUIRED

PAC, 16 MAY 2024 to 11 JUL 2024

PAC, 16 MAY 2024 to 11 JUL 2024