

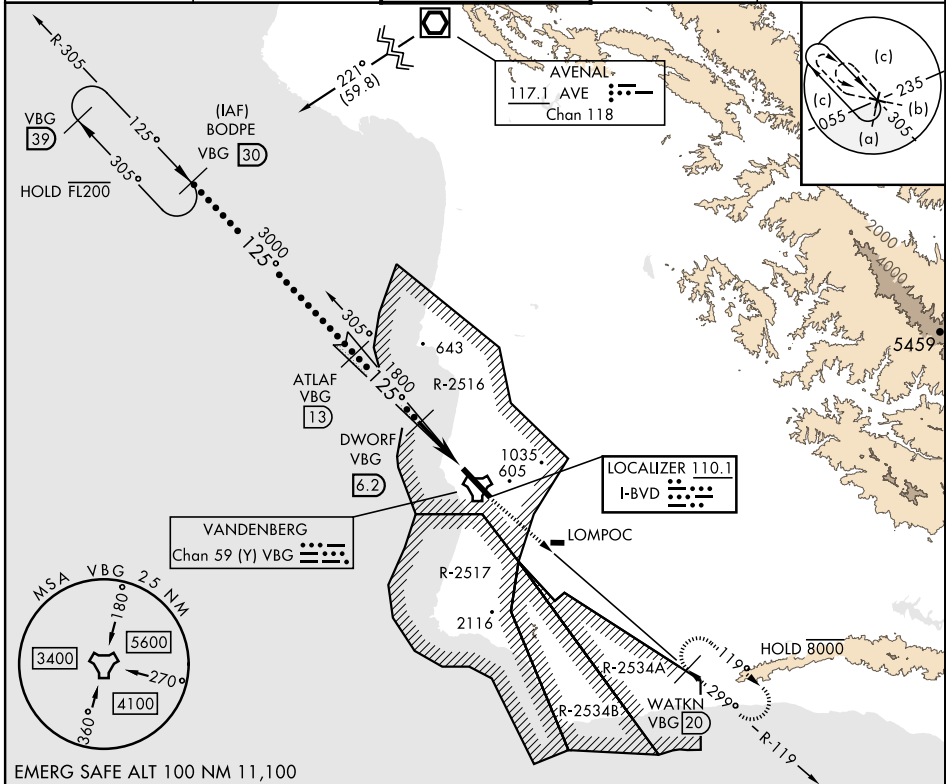
# HI-ILS or LOC/DME RWY 12

LOC I-BVD <b>110.1</b>	APCH CRS <b>125°</b>	Rwy Idg <b>15,000</b> TDZE <b>265</b> Arprt Elev <b>368</b>	AL-770 [USSF]	VANDENBERG SFB (KVBG)
---------------------------	-------------------------	---	---------------	-----------------------

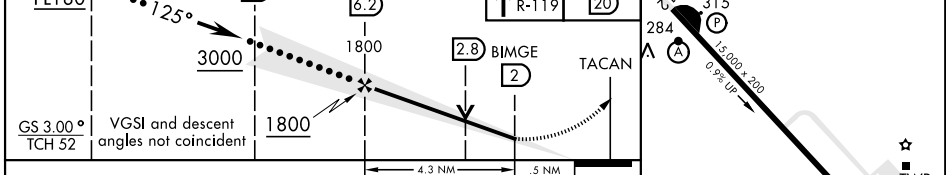
DME required. **ALSIF-2** MISSED APPROACH: Climb out VBG TACAN R-119 until 20 DME (WATKN) and hold. Continue climb in hold maintain 7000.

▼ \* When ALS inop, increase RVR to 40 and vis to ¾ mile.  
\*\* When ALS inop, increase CAT CDE vis to 1¼ mile.

ATIS <b>133.125 257.975</b>	SANTA BARBARA APP/DEP CON <b>124.15 327.8</b>	TOWER ★ <b>124.95 0</b> (CTAF) <b>326.2</b>	GND CON <b>121.75 275.8</b>	CLNC DEL <b>121.75 275.8</b>
--------------------------------	---	--	--------------------------------	---------------------------------



BODPE R-305 <b>30</b> FL180	ATLAF <b>13</b>	DWORF <b>6.2</b>	7000 VBG R-119	WATKN VBG <b>20</b>	ELEV 368 125°	TDZE 265
--------------------------------	-----------------	------------------	----------------	---------------------	------------------	----------



CATEGORY	C	D	E
S-ILS 12 *	465/24	200 (100-½)	
S-LOC/DME 12 **	700/40	435 (400-¾)	
CIRCLING	1020-1¼ 652 (700-1¼)	1180-2¾ 812 (900-2¾)	1560-3 1192 (1200-3)

HIRL Rwy 12-30

# HI-ILS or LOC/DME RWY 12

SW-3, 16 MAY 2024 to 13 JUN 2024

SW-3, 16 MAY 2024 to 13 JUN 2024

