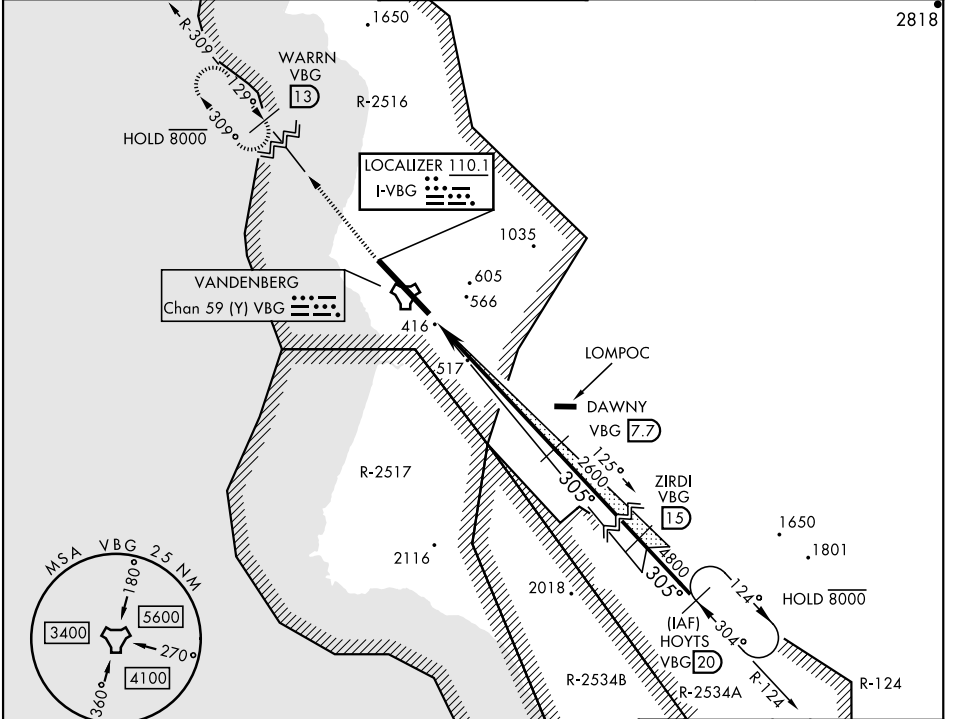


ILS or LOC/DME RWY 30

LOC I-VBG 110.1	APCH CRS 305°	Rwy Ldg 15,000 TDZE 368 Arpt Elev 368	AL-770 [USSF]	VANDENBERG SFB (KVBG)
---------------------------	-------------------------	--	---------------	-----------------------

DME required.		ALSIF-2	MISSED APPROACH: Climb out VBG TACAN R-309 to WARRN and hold. Continue climb in hold maintain 4000.		
▼ * When ALS inop, increase RVR to 40 and vis to 3/4 mile. ** When ALS inop, increase CAT AB RVR to 55 and vis to 1 mile, CAT CDE vis to 1 1/2 miles.					

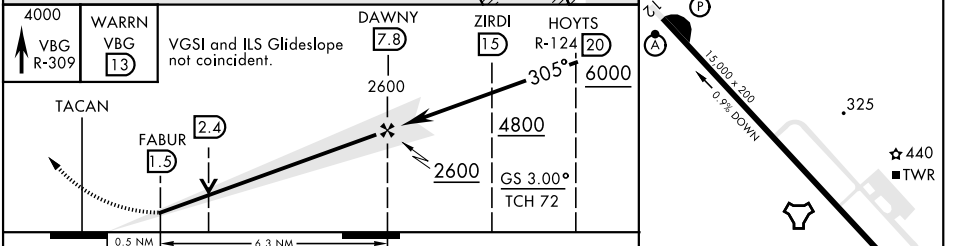
ATIS 133.125 257.975	SANTA BARBARA APP/DEP CON 124.15 327.8	TOWER ★ 124.95 (CTAF) 326.2	GND CON 121.75 275.8	CLNC DEL 121.75 275.8
--------------------------------	---	--	--------------------------------	---------------------------------



SW-3, 16 MAY 2024 to 13 JUN 2024

SW-3, 16 MAY 2024 to 13 JUN 2024

ELEV 368	TDZE 368
-----------------	-----------------



CATEGORY	A	B	C	D	E
S-ILS 30 *	568/24		200	(200-1/2)	
S-LOC/DME 30 **	900/24	532 (600-1/2)	900/55	532 (600-1)	
CIRCLING	980-1 612 (700-1)	1000-1 632 (700-1)	1020-1 3/4 652 (700-1 3/4)	1180-2 3/4 812 (900-2 3/4)	1560-3 1192 (1200-3)

ILS or LOC/DME RWY 30