

HI-ILS or LOC Z RWY 33

LOC I-MIZ 109.5	APCH CRS 325°	Rwy ldg 12,001	TDZE 105
		Arpt Elev 113	

(USAF)

BEALE AFB (KBAB)

RADAR or DME required

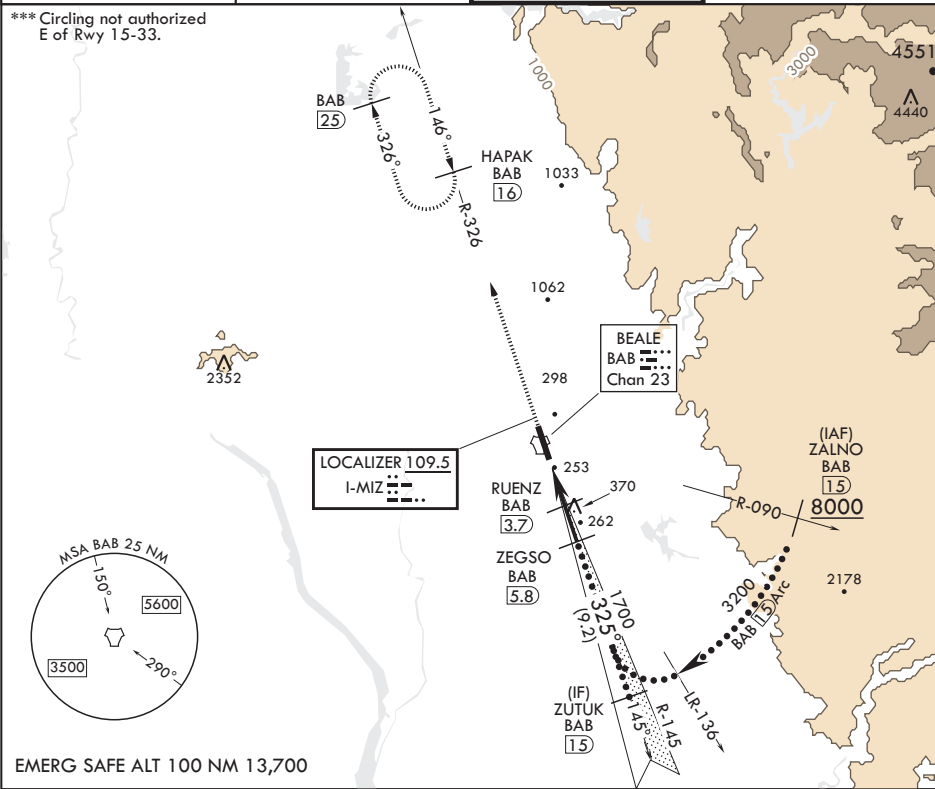


MISSED APPROACH: Climb to 3600 intercept BAB R-326 to HAPAK and hold.

▼ * When ALS inop, increase CAT CDE RVR to 40 and vis to 3/4 mile.
 ** When ALS inop, increase CAT CDE RVR to 60 vis to 1 1/8 miles.

ATIS* 124.55 273.5	NORCAL APP CON 125.4 259.1	TOWER* 119.4 284.75	GND CON 121.6 257.75
------------------------------	--------------------------------------	-------------------------------	--------------------------------

*** Circling not authorized E of Rwy 15-33.

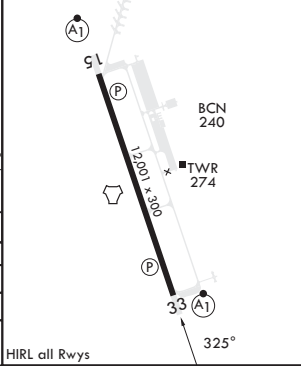
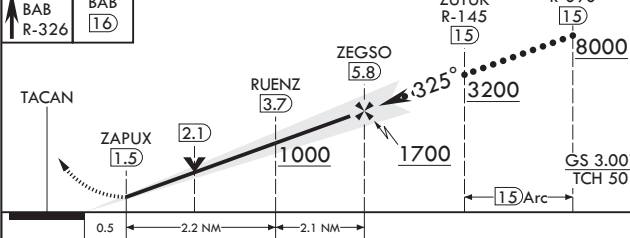


SW-2, 16 MAY 2024 to 13 JUN 2024

SW-2, 16 MAY 2024 to 13 JUN 2024

EMERG SAFE ALT 100 NM 13,700

3600 BAB R-326	HAPAK BAB 16	ZUTUK R-145 15	ZALNO R-090 15	ELEV 113	TDZE 105
----------------------	--------------------	----------------------	----------------------	----------	----------



CATEGORY	C	D	E
S-ILS 33*	305/24	200	(200-½)
S-LOC 33**	520/40	415	(500-¾)
◻ CIRCLING***	600-1½ 487 (500-1½)	800-2¼ 687 (700-2¼)	800-2½ 687 (700-2½)

HIRL all Rwys

HI-ILS or LOC Z RWY 33