

MARYSVILLE, CALIFORNIA

RNAV (GPS) RWY 15

APCH CRS	Rwy Idg	12,001
145°	THRE	113
	Arprt Elev	113

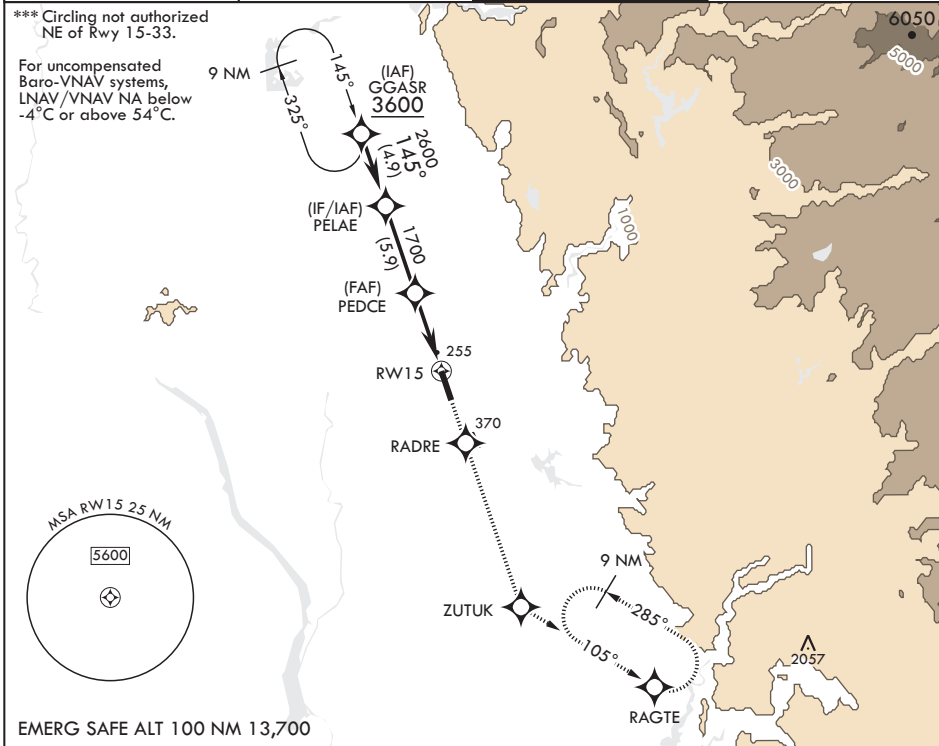
-(USAF)

BEALE AFB (KBAB)

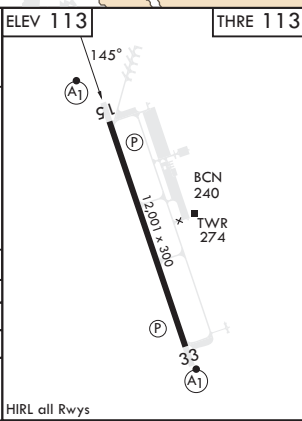
RNP APCH
 * When ALS inop, increase RVR to 60, vis to 1 1/8 miles.
 ** When ALS inop, increase CAT AB RVR to 55 and vis to 1 mile;
 CAT CDE vis to 1 3/8 miles.

ALSF-1 MISSED APPROACH: Climb to 3600 direct RADRE, track 145° to ZUTUK, track 105° to RAGTE and hold, continue climb-in-hold to 3600.

ATIS★	NORCAL APP CON	TOWER★	GND CON
124.55 273.5	125.4 259.1	119.4 284.75	121.6 257.75



PELAE	VGSi and RNAV glidepath not coincident (VGSi Angle 2.75/TCH 53):		3600	RADRE	tr 145°	ZUTUK	ELEV 113	THRE 113	
2600	1700		↑	◆	◆	◆	113	113	
GP 2.75° TCH 47	1.5 NM to RWY 15								
	5.3 NM								
CATEGORY	A	B	C	D	E				
LNAV/VNAV DA*	530/40		417		(500-¾)				
LNAV MDA**	600/24 487 (500-½)		600/50		487 (500-1)				
CIRCLING***	600-1 487 (500-1)		600-1½ 487 (500-1½)		800-2¼ 687 (700-2¼)		800-2½ 687 (700-2½)		



MARYSVILLE, CALIFORNIA
 Amdt 2 25JAN24

39°08'N - 121°26'W

BEALE AFB (KBAB)

RNAV (GPS) RWY 15

SW-2, 16 MAY 2024 to 13 JUN 2024

SW-2, 16 MAY 2024 to 13 JUN 2024