

MARYSVILLE, CALIFORNIA

RNAV (GPS) RWY 33

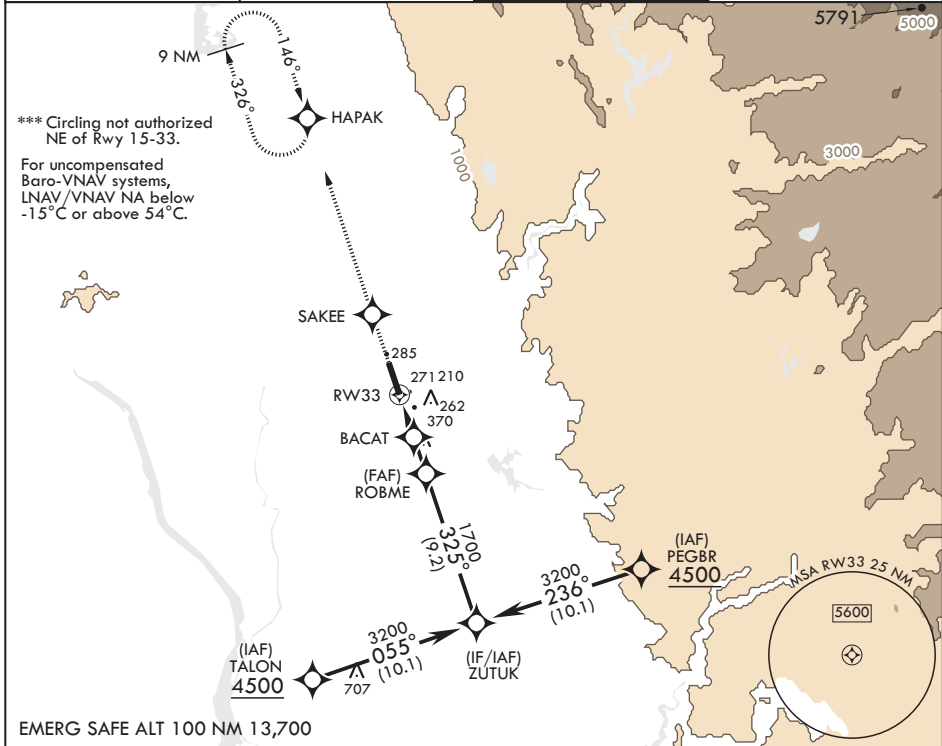
APCH CRS 325°	Rwy Idg THRE Arpt Elev 12,001 105 113
-------------------------	---

(USAF)

BEALE AFB (KBAB)

RNP APCH	ALSF-1	MISSED APPROACH: Climb to 3600 direct SAKEE, track 326° to HAPAK and hold.
<p>▼ * When ALS inop, increase vis to 1 1/4 miles. ** When ALS inop, increase CAT AB RVR to 55 and vis to 1 mile, CAT CDE vis to 1 1/4 miles.</p>		

ATIS★ 124.55 273.5	NORCAL APP CON 125.4 259.1	TOWER★ 119.4 284.75	GND CON 121.6 257.75
------------------------------	--------------------------------------	-------------------------------	--------------------------------



SW-2, 16 MAY 2024 to 13 JUN 2024

SW-2, 16 MAY 2024 to 13 JUN 2024

3600 SAKEE	ELEV 113					THRE 105				
CATEGORY	A	B	C	D	E					
LNAV/VNAV DA*	540/40		435	(500-¾)						
LNAV MDA**	540/24	435 (500-½)	540/40	435	(500-¾)					
CIRCLING***	600-1	487 (500-1)	600-1½ 487 (500-1½)	800-2¼ 687 (700-2¼)	800-2½ 687 (700-2½)					
HIRL all Rwys										

MARYSVILLE, CALIFORNIA 39°08'N - 121°26'W BEALE AFB (KBAB)

Amdt 2 22FEB24

RNAV (GPS) RWY 33