

MARYSVILLE, CALIFORNIA

TACAN Y RWY 33

TACAN BAB Chan 23	APCH CRS 317°	Rwy ldg TDZE Arprt Elev	12,001 105 113
----------------------	------------------	-------------------------------	----------------------

-(USAF)

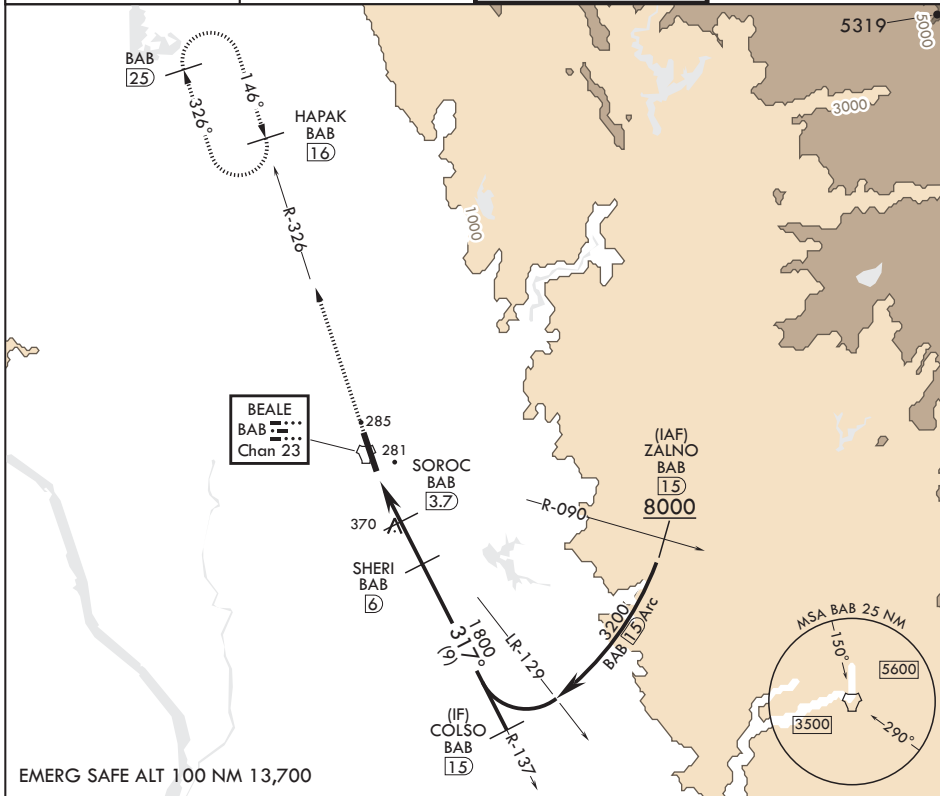
BEALE AFB (KBAB)

⚠ *When ALS inop, increase CAT AB RVR to 55 and vis to 1 mile, CAT CDE vis to 1 1/4 miles.
 ** Circling not authorized E of Rwy 15-33.



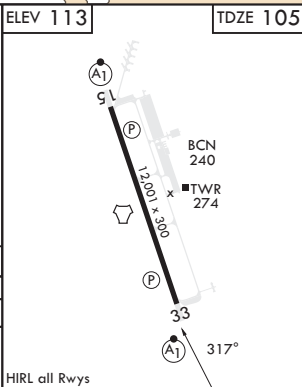
MISSED APPROACH: Climb to 3600 intercept BAB TACAN R-326 to HAPAK and hold.

ATIS* 124.55 273.5	NORCAL APP CON 125.4 259.1	TOWER* 119.4 284.75	GND CON 121.6 257.75
-----------------------	-------------------------------	------------------------	-------------------------



EMERG SAFE ALT 100 NM 13,700

3600 ↑ BAB R-326	HAPAK BAB 16	COLSO 15	ELEV 113	TDZE 105	
TACAN	EGUYO 1.5	SOROC 3.7	SHERI 6	COLSO 15	
2.2 NM		2.3 NM		3200	
≤ 3.09° TCH 51		1800			
CATEGORY	A	B	C	D	E
S-33*	540/24	435 (500-1/2)	540/40	435	(500-3/4)
CIRCLING**	600-1	487 (500-1)	600-1 1/2 487 (500-1 1/2)	800-2 1/4 687 (700-2 1/4)	800-2 1/2 687 (700-2 1/2)



HIRL all Rwys

MARYSVILLE, CALIFORNIA
Amdt 6 25JAN24

39°08'N - 121°26'W

BEALE AFB (KBAB)

TACAN Y RWY 33

SW-2, 16 MAY 2024 to 13 JUN 2024

SW-2, 16 MAY 2024 to 13 JUN 2024