

LOC/DME I-LNY <b>111.1</b> Chan <b>48</b>	APP CRS <b>033°</b>	Rwy Idg TDZE Apt Elev	<b>5000</b> <b>1307</b> <b>1308</b>
---	------------------------	-----------------------------	---

# ILS or LOC RWY 3

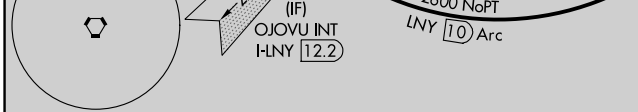
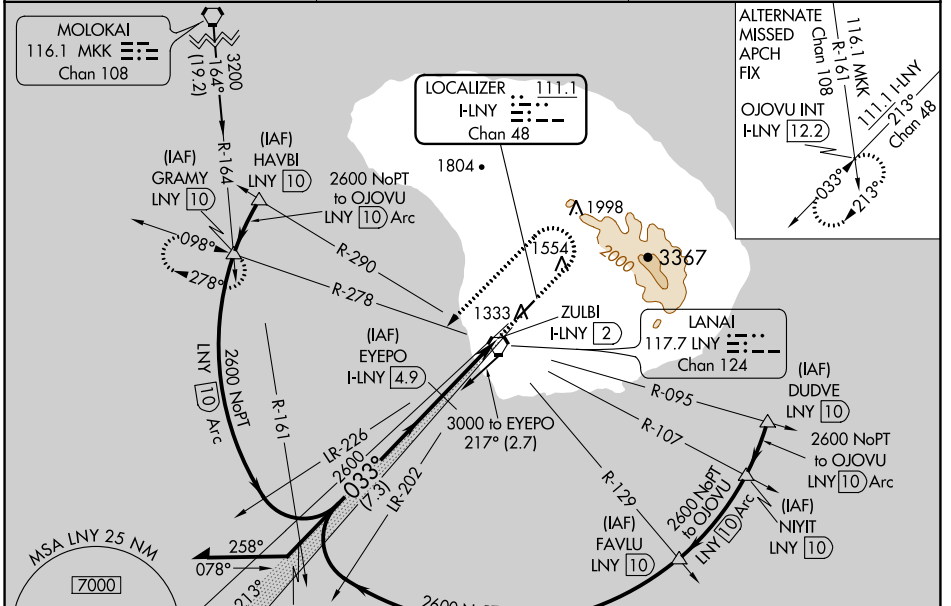
LANAI (LNY)(PHNY)

DME required.

**NA** Circling Rwy 21 NA at night. Autopilot coupled approach NA below 1505. When local altimeter setting not received, procedure NA, except for operators with approved weather reporting service. Circling NA for Cat C southeast of Rwy 3-21.

MISSED APPROACH: Climb to 1800 then climbing left turn to 3500 on heading 224° and LNY VORTAC R-278 to GRAMY INT/LNY VORTAC 10 DME and hold.

AWOS-3P <b>118.375</b>	HCF CENTER <b>119.3 307.1</b>	CTAF <b>122.9</b>
---------------------------	----------------------------------	----------------------



ELEV 1308	<b>D</b> TDZE 1307
-----------	--------------------

VGSI and ILS glidepath not coincident EYEPO (VGSI Angle 3.00/TCH 49).

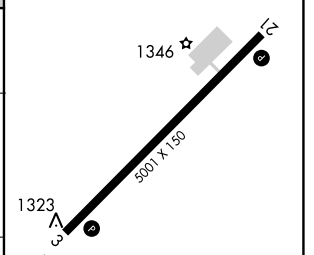
Remain within 10 NM

Use I-LNY DME when on the localizer course.

1800	3500	LNY R-278	GRAMY
↑	hdg 224°	△	

GS 3.00° TCH 52

2.9 NM | 1 NM



CATEGORY	A	B	C	D
S-ILS 3		1588-1	281 (300-1)	
S-LOC 3		1580-1¼	273 (300-1¼)	
CIRCLING	1900-1¼ 592 (600-1¼)	1940-1¼ 632 (700-1¼)	2140-2½ 832 (900-2½)	NA

MRL Rwy 3-21