

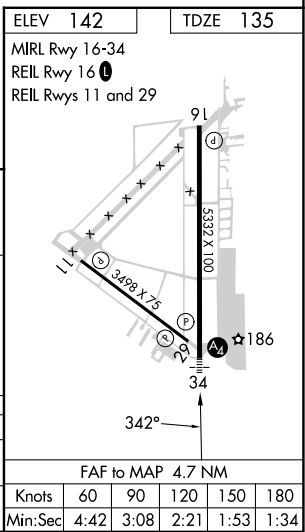
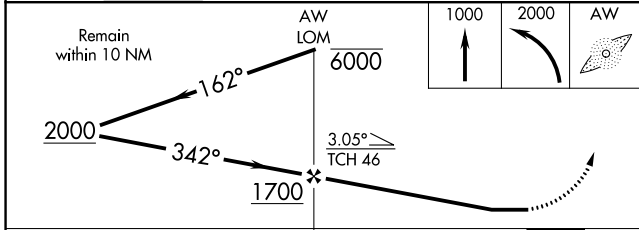
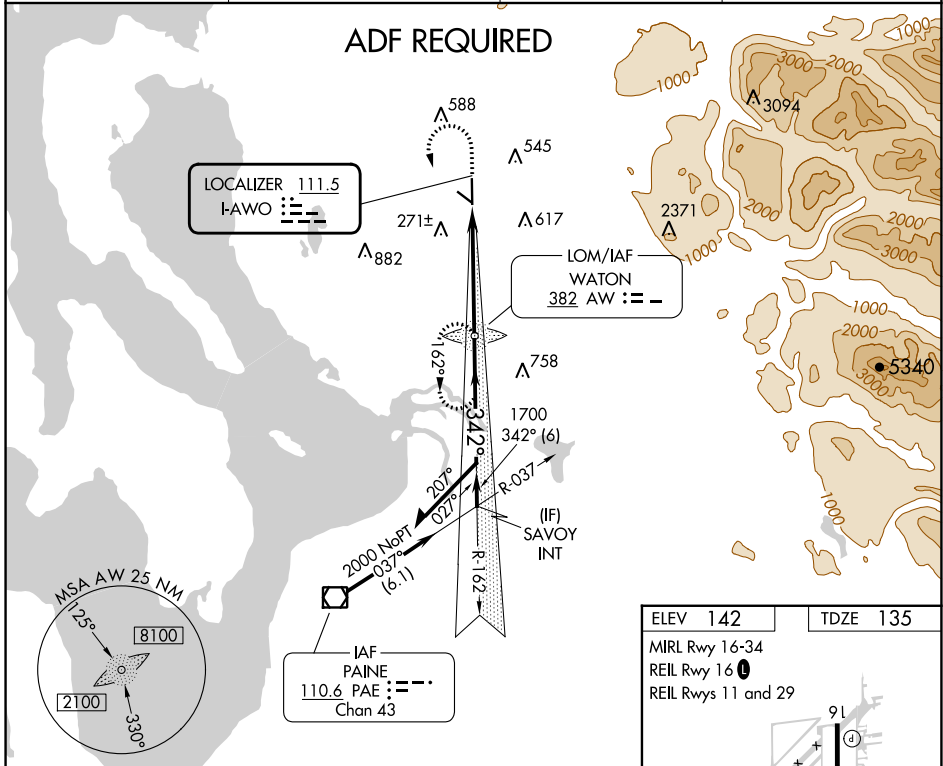
LOC I-AWO <b>111.5</b>	APP CRS <b>342°</b>	Rwy Idg <b>5332</b> TDZE <b>135</b> Apt Elev <b>142</b>
---------------------------	------------------------	---

**LOC RWY 34**  
ARLINGTON MUNI (AWO)

**ADF REQUIRED.** When local altimeter setting not received, use Whidbey Island NAS (Ault Field) altimeter setting: increase all MDA 80 feet and visibility S-34 Cats C and D and Circling Cats B and C ¼ SM. For inop MALS, increase S-34 Cats C and D visibility to 1 ¾.

**MALS**  
MISSED APPROACH: Climb to 1000 then climbing left turn to 2000 direct WATON LOM and hold.

AWOS-3PT <b>135.625</b>	SEATTLE APP CON <b>128.5 306.9</b>	CLNC DEL <b>121.725</b>	CTAF <b>122.725</b>
----------------------------	---------------------------------------	----------------------------	------------------------



CATEGORY	A	B	C	D
S-34	580-¾ 445 (500-¾)		580-1 445 (500-1)	
CIRCLING	840-1 698 (700-1)	900-1 758 (800-1)	1000-2½ 858 (900-2½)	1040-3 898 (900-3)

NW-1, 16 MAY 2024 to 13 JUN 2024

NW-1, 16 MAY 2024 to 13 JUN 2024