

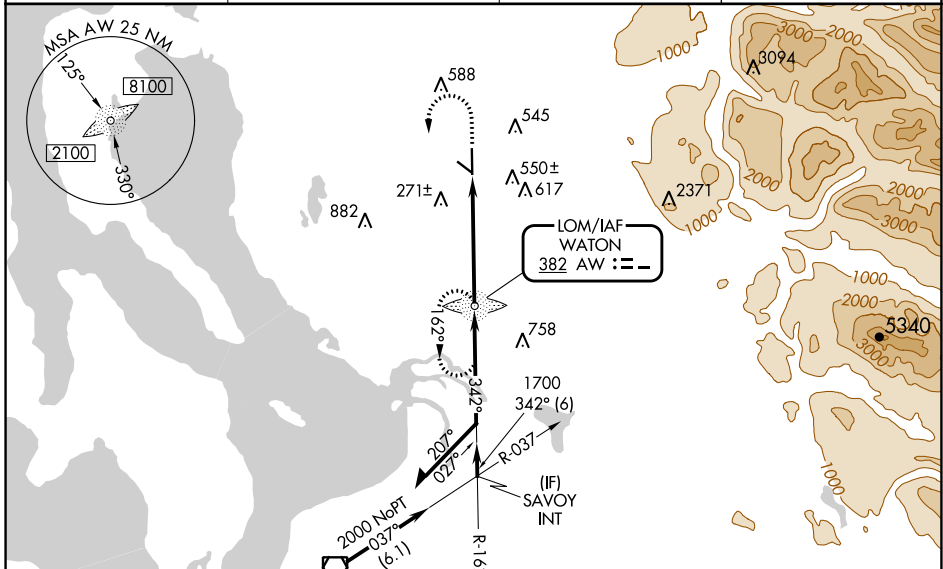
LOM AW <b>382</b>	APP CRS <b>342°</b>	Rwy ldg <b>5332</b>
		TDZE <b>135</b>
		Apt Elev <b>142</b>

# NDB RWY 34

ARLINGTON MUNI (AWO)

<p>▼ NA</p> <p>When local altimeter setting not received, use Whidbey Island NAS (Ault Field) altimeter setting: increase all MDA 80 feet and visibility S-34 Cats B, C, and D and Circling Cats B and C ¼ SM. For inop MALS when using Whidbey Island NAS (Ault Field) altimeter setting, increase S-34 Cats C and D visibility to 2½.</p>	<p>MALS</p>	<p>MISSED APPROACH: Climb to 1000 then climbing left turn to 2000 direct AW LOM and hold.</p>

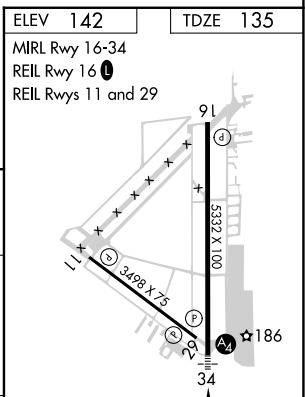
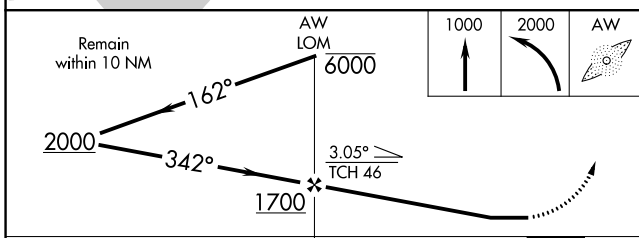
AWOS-3PT <b>135.625</b>	SEATTLE APP CON <b>128.5 306.9</b>	CLNC DEL <b>121.725</b>	CTAF <b>122.725 0</b>
----------------------------	---------------------------------------	----------------------------	--------------------------



NW-1, 16 MAY 2024 to 13 JUN 2024

NW-1, 16 MAY 2024 to 13 JUN 2024

ELEV 142	TDZE 135
MIRL Rwy 16-34	REIL Rwy 16 0
	REIL Rws 11 and 29



CATEGORY	A	B	C	D
S-34	860-¾ 725 (800-¾)		860-1¾ 725 (800-1¾)	
CIRCLING	860-1 718 (800-1)	900-1 758 (800-1)	1000-2½ 858 (900-2½)	1040-3 898 (900-3)

FAF to MAP 4.7 NM					
Knots	60	90	120	150	180
Min:Sec	4:42	3:08	2:21	1:53	1:34