

WAAS CH 72639 W04A	APP CRS 040°	Rwy Idg 4999 TDZE 900 Apt Elev 900
--	------------------------	---

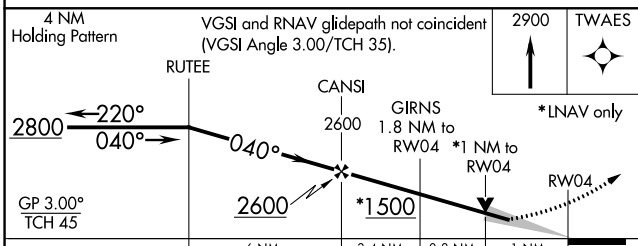
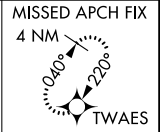
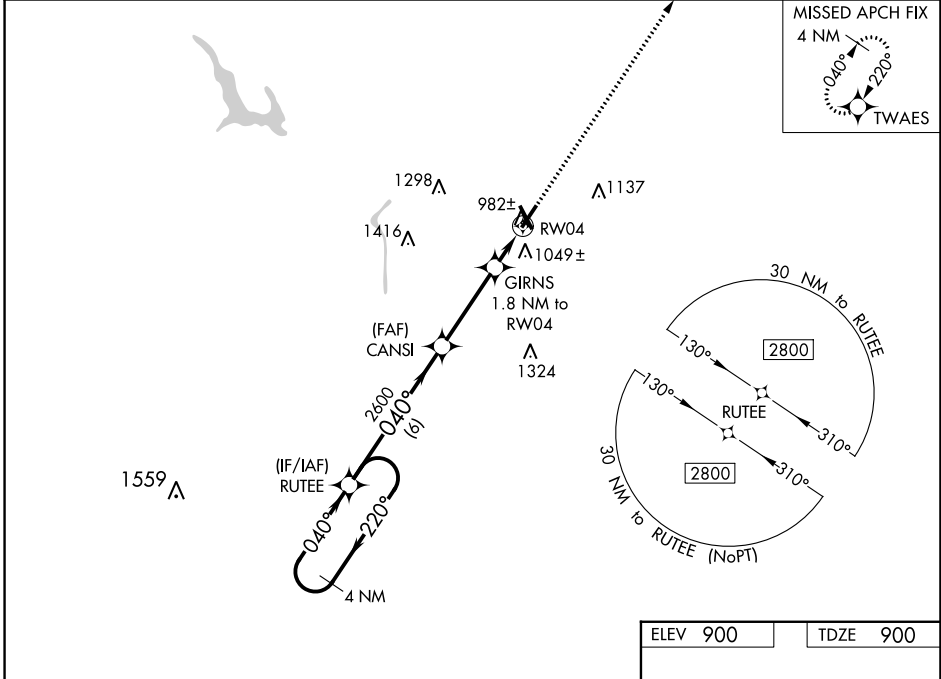
RNAV (GPS) RWY 4

ZANESVILLE MUNI (ZZV)

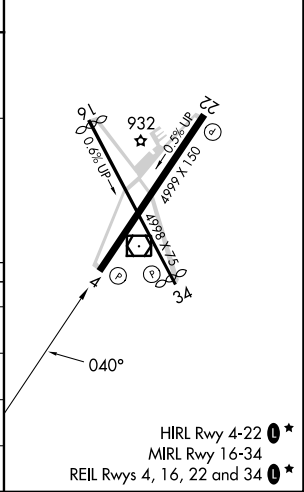
⚠ For uncompensated Baro-VNAV systems, LNAV/VNAV NA below -21°C (-5°F) or above 54°C (130°F). Baro-VNAV and VDP NA when using Newark altimeter setting. DME/DME RNP-0.3 NA. When local altimeter setting not received, use Newark altimeter setting and increase all LPV and LNAV/VNAV DA to 1214 and all visibilities to 1 SM, increase all MDA 80 feet; increase LNAV Cat C/D visibility 1/8 SM and Circling Cat C/D visibility 1/4 SM.

MISSED APPROACH:
Climb to 2900 direct TWAES and hold.

ASOS 114.95	INDIANAPOLIS CENTER 124.45 323.275	UNICOM 123.0 (CTAF) 0*
-----------------------	--	----------------------------------



ELEV 900	TDZE 900
----------	----------



CATEGORY	A	B	C	D
LPV DA		1150-7/8	250 (300-7/8)	
LNAV/VNAV DA		1150-7/8	250 (300-7/8)	
LNAV MDA		1240-1	340 (400-1)	
C CIRCLING	1380-1 480 (500-1)	1400-1 500 (500-1)	1620-2 720 (800-2)	1620-2 1/4 720 (800-2 1/4)

HIRL Rwy 4-22 **0***
MIRL Rwy 16-34
REIL Rws 4, 16, 22 and 34 **0***

EC-2, 16 MAY 2024 to 13 JUN 2024

EC-2, 16 MAY 2024 to 13 JUN 2024