

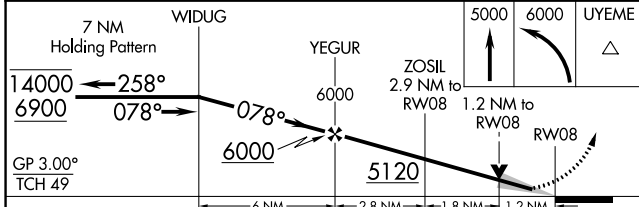
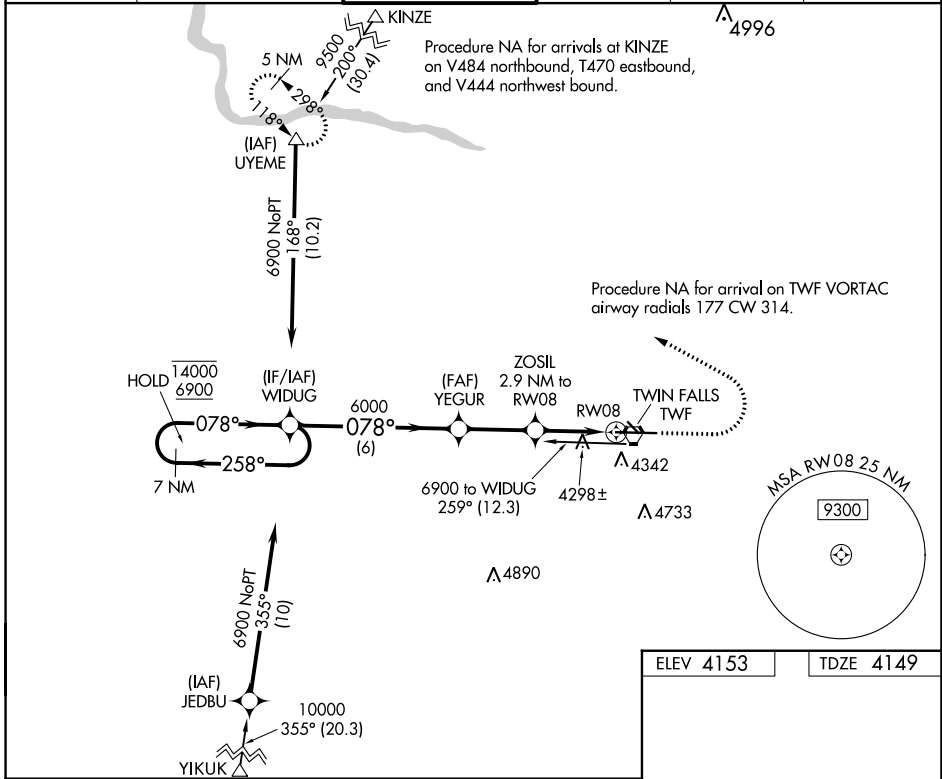
WAAS CH <b>40211</b>	APP CRS <b>078°</b>	Rwy Idg TDZE Apt Elev	<b>8704</b> <b>4149</b> <b>4153</b>
<b>W08A</b>			

# RNAV (GPS) RWY 8

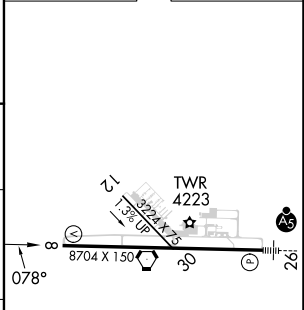
JOSLIN FLD/MAGIC VALLEY RGNL (TWF)

RNP APCH - GPS.			MISSED APPROACH: Climb to 5000 then climbing left turn to 6000 direct UYEME and hold.		
<p><b>▽</b> Circling Rwy 30 NA at night. For uncompensated Baro-VNAV systems, LNAV/VNAV NA below -16°C or above 54°C.</p> <p><b>▲</b></p>					

ASOS <b>135.025</b>	TWIN FALLS APP CON* <b>126.7 353.75</b>	TWIN FALLS TOWER* <b>118.2 (CTAF) 0 317.5</b>	GND CON <b>121.7</b>	CLNC DEL <b>123.65</b>	UNICOM <b>122.95</b>
------------------------	--	--	-------------------------	---------------------------	-------------------------



ELEV 4153	TDZE 4149
-----------	-----------



CATEGORY	A	B	C	D
LPV DA		4349-3/4	200 (200-3/4)	
LNAV/VNAV DA		4583-1 1/4	434 (500-1 1/4)	
LNAV MDA	4560-1	411 (500-1)	4560-1 1/8	411 (500-1 1/8)
CIRCLING	4700-1 547 (600-1)	4780-1 627 (700-1)	5100-2 3/4 947 (1000-2 3/4)	5100-3 947 (1000-3)

REIL Rwy 8 <b>0</b>
HIRL Rwy 8-26 <b>0</b>

NW-1, 16 MAY 2024 to 13 JUN 2024

NW-1, 16 MAY 2024 to 13 JUN 2024