

COPTER ILS Y or LOC Y RWY 6

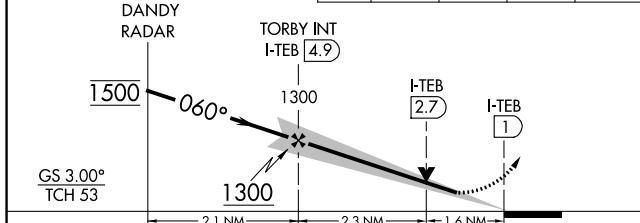
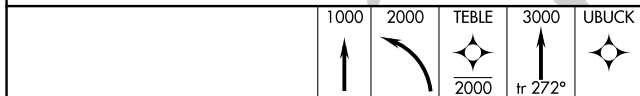
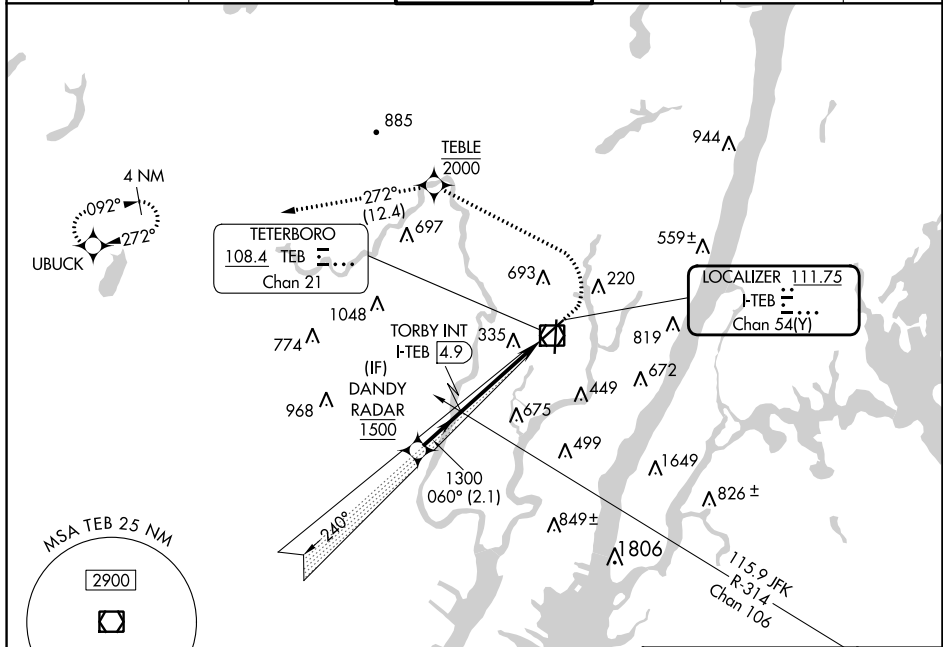
TETERBORO (TEB)

LOC/DME I-TEB 111.75 Chan 54 (Y)	APP CRS 060°	Rwy Idg 6013 TDZE 6 Apt Elev 8
--	------------------------	---

RNP APCH - GPS.
RADAR required.
NA

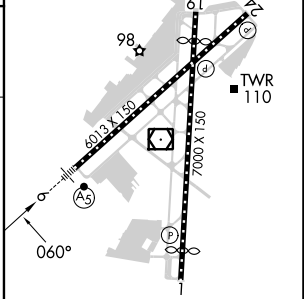
MALS
MISSED APPROACH: Climb to 1000, then climbing left turn to 2000 direct TEBLE, cross TEBLE at or below 2000, then climb to 3000 on track 272° to UBUCK and hold.

D-ATIS 114.2 132.85	NEW YORK APP CON 127.6 379.9	TETERBORO TOWER 119.5	GND CON 121.9	CLNC DEL 128.05	CPDLC
-------------------------------	--	---------------------------------	-------------------------	---------------------------	-------



CATEGORY	COPTER	
H-ILS 6	206/12	200 (200-¼)
H-LOC 6	580/24	574 (600-½)

ELEV 8	D	TDZE 6
--------	---	--------



TDZ/CL Rws 6 and 19 REIL Rws 1, 6, 19 and 24 HIRL Rws 1-19 and 6-24	FAF to MAP 3.9 NM				
Knots	45	60	75	90	105
Min:Sec	5:12	3:54	3:07	2:36	2:14

COPTER ILS Y or LOC Y RWY 6

NE-2, 16 MAY 2024 to 13 JUN 2024

NE-2, 16 MAY 2024 to 13 JUN 2024