

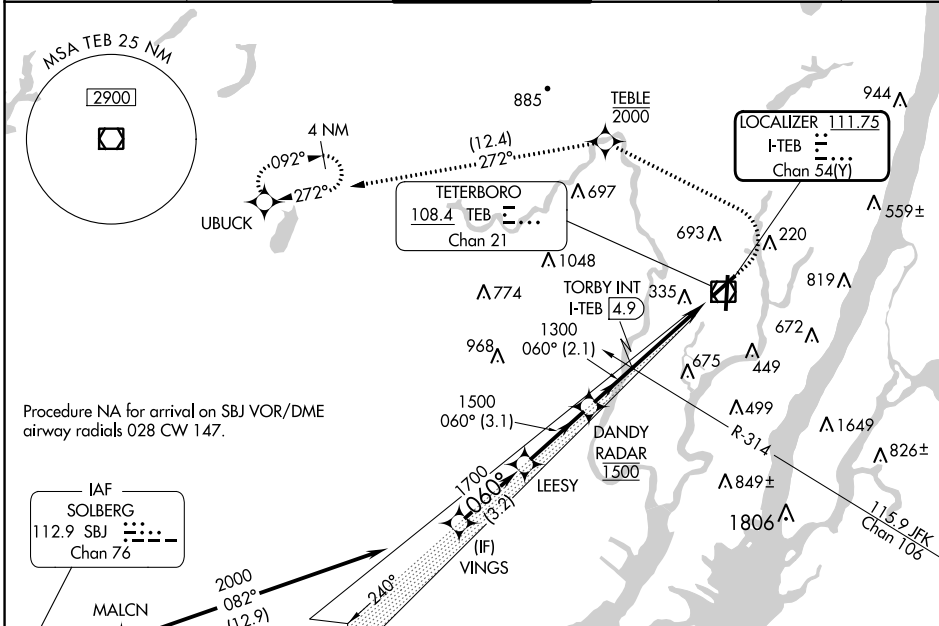
LOC/DME I-TEB	APP CRS	Rwy Idg	6013
111.75	060°	TDZE	6
Chan 54(Y)		Apt Elev	8

ILS Z or LOC Z RWY 6

TETERBORO (TEB)

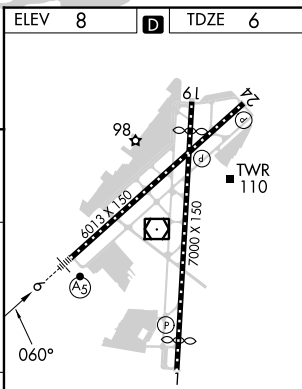
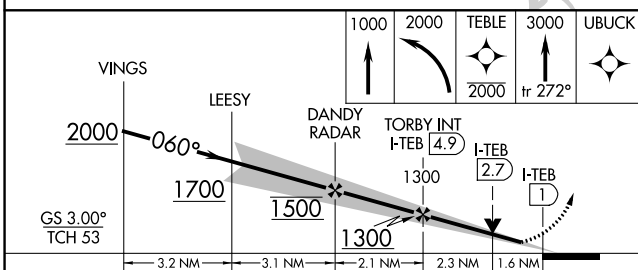
RNP APCH - GPS.		MALSR AS	MISSED APPROACH: Climb to 1000, then climbing left turn to 2000 direct TEBLE, cross TEBLE at or below 2000, then climb to 3000 on track 272° to UBUCK and hold.
RADAR required.			
<p>▼ Circling NA for Cats B, C and D northwest of Rws 6 and 19.</p>			

D-ATIS	NEW YORK APP CON	TETERBORO TOWER	GND CON	CLNC DEL	CPDLC
114.2 132.85	127.6 379.9	119.5	121.9	128.05	



Procedure NA for arrival on SBJ VOR/DME airway radials 028 CW 147.

ELEV	8	TDZE	6
------	----------	------	----------



CATEGORY	A	B	C	D
S-ILS 6		206/18	200 (200-½)	
S-LOC 6	580/24	574 (600-½)	580-1¼	574 (600-1¼)
CIRCLING	760-1	752 (800-1)	820-2½ 812 (900-2½)	1040-3 1032 (1100-3)

FAF to MAP 3.9 NM					
Knots	60	90	120	150	180
Min:Sec	3:54	2:36	1:57	1:34	1:18

NE-2, 16 MAY 2024 to 13 JUN 2024

NE-2, 16 MAY 2024 to 13 JUN 2024