

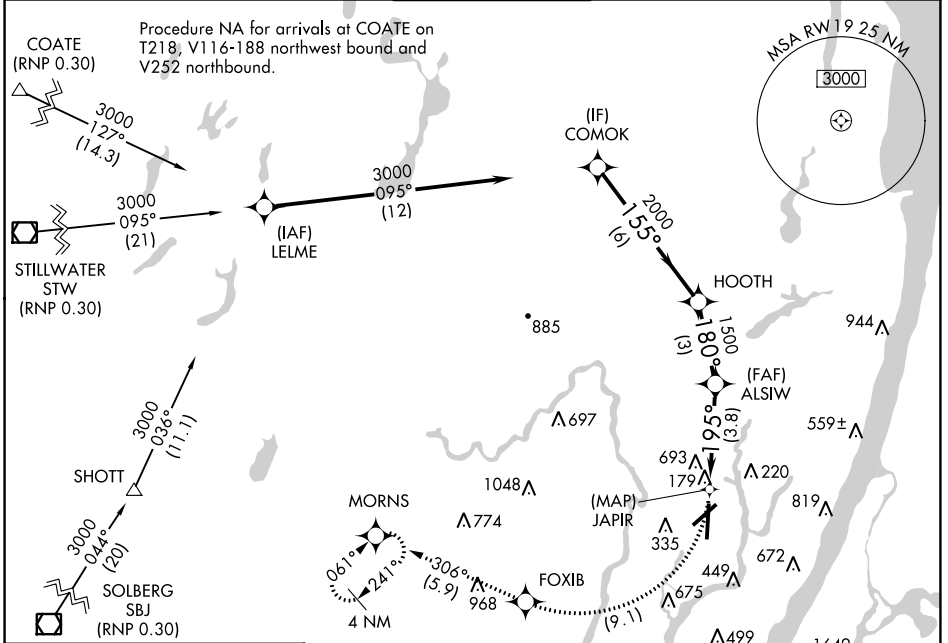
APP CRS	Rwy Idg	<b>6230</b>
<b>195°</b>	TDZE	<b>6</b>
	Apt Elev	<b>8</b>

# RNAV (RNP) Z RWY 19

TETERBORO (TEB)

<b>▼</b>	For uncompensated Baro-VNAV systems, procedure NA below -13°C (8°F) or above 54°C (130°F). RF required. GPS required.	MISSED APPROACH: Climb to 1500 via right turn to FOXIB, then climb to 3000 on track 306° to MORNNS and hold.
<b>▲</b> NA	Misled approach requires RNP less than 1.0.	

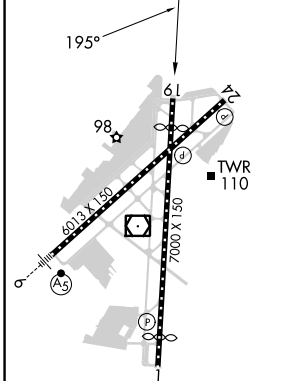
D-ATIS	NEW YORK APP CON	TETERBORO TOWER	GND CON	CLNC DEL	CPDLC
<b>114.2 132.85</b>	<b>127.6 379.9</b>	<b>119.5</b>	<b>121.9</b>	<b>128.05</b>	



NE-2, 16 MAY 2024 to 13 JUN 2024

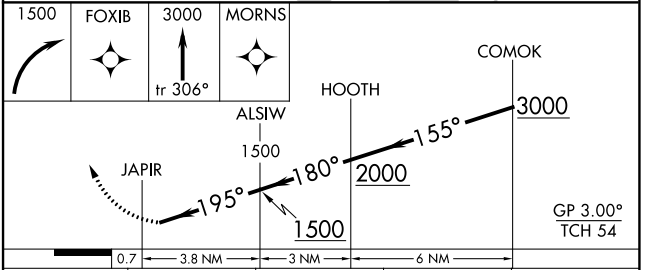
NE-2, 16 MAY 2024 to 13 JUN 2024

ELEV	<b>8</b>	<b>D</b>	TDZE	<b>6</b>
------	----------	----------	------	----------



TDZ/CL Rwy 6 and 19  
 REIL Rwy 1, 6, 19 and 24  
 HIRL Rwy 1-19 and 6-24

Procedure NA for arrivals on SBJ VOR/DME airway radials 028 CW 117.



CATEGORY	A	B	C	D
RNP 0.10 DA	499-1¾ 493 (500-1¾)			

### AUTHORIZATION REQUIRED