

WAAS CH <b>49043</b> <b>W19B</b>	APP CRS <b>182°</b>	Rwy Idg TDZE Apt Elev	<b>6230</b> <b>6</b> <b>8</b>
--	------------------------	-----------------------------	-------------------------------------

# RNAV (GPS) X RWY 19

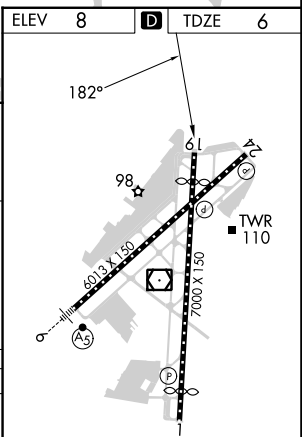
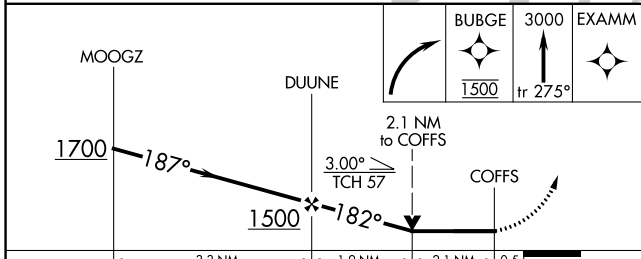
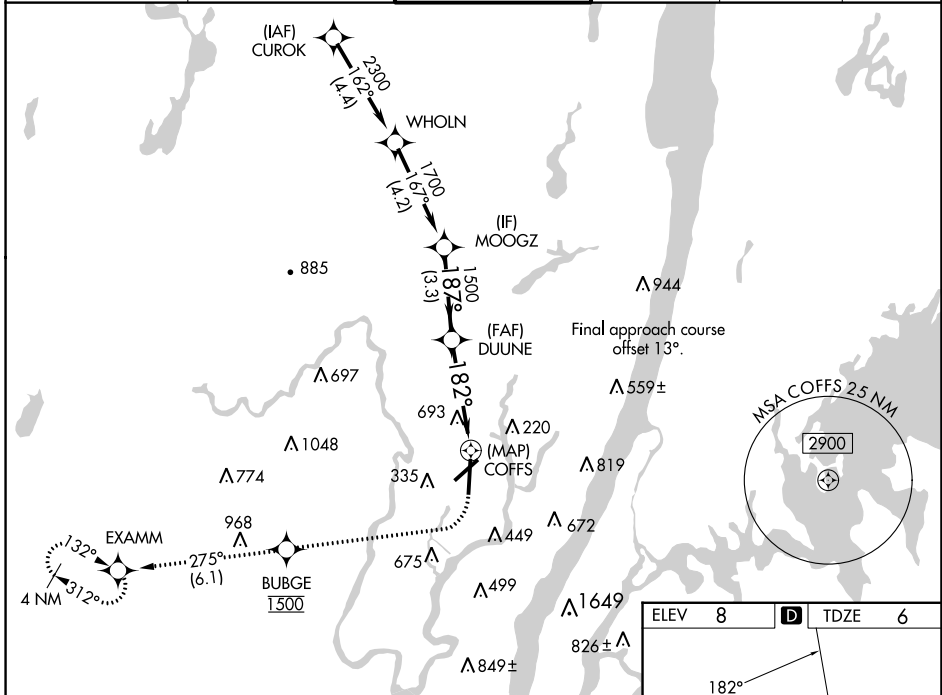
TETERBORO (TEB)

RNP APCH. RADAR required.

**⚠** Rwy 19 helicopter visibility reduction below 3/4 SM NA. Circling NA for Cats B, C, D northwest of Rwy 06-19.

MISSED APPROACH: Climbing right turn direct BUBGE, cross BUBGE at 1500, then climb to 3000 on track 275° to EXAMM and hold, continue climb-in-hold to 3000.

D-ATIS <b>114.2 132.85</b>	NEW YORK APP CON <b>127.6 379.9</b>	TETERBORO TOWER <b>119.5</b>	GND CON <b>121.9</b>	CLNC DEL <b>128.05</b>	CPDLC
-------------------------------	--	---------------------------------	-------------------------	---------------------------	-------



	3.3 NM		1.9 NM		2.1 NM		0.5 NM	
CATEGORY	A		B		C		D	
LP MDA	880-1 874 (900-1)		880-1½ 874 (900-1¼)		880-2½		874 (900-2½)	
LNAV MDA	960-1¼ 954 (1000-1¼)		960-1½ 954 (1000-1½)		960-3		954 (1000-3)	
<b>C</b> CIRCLING	960-1¼ 952 (1000-1¼)		960-1½ 952 (1000-1½)		960-3 952 (1000-3)		1040-3 1032 (1100-3)	

TDZ/CL Rws 6 and 19  
REIL Rws 1, 6, 19 and 24  
HIRL Rws 1-19 and 6-24

NE-2, 16 MAY 2024 to 13 JUN 2024

NE-2, 16 MAY 2024 to 13 JUN 2024