

WAAS CH <b>97736</b> <b>W19A</b>	APP CRS <b>195°</b>	Rwy Idg TDZE Apt Elev	<b>6230</b> <b>6</b> <b>8</b>
--	------------------------	-----------------------------	-------------------------------------

# RNAV (GPS) Y RWY 19

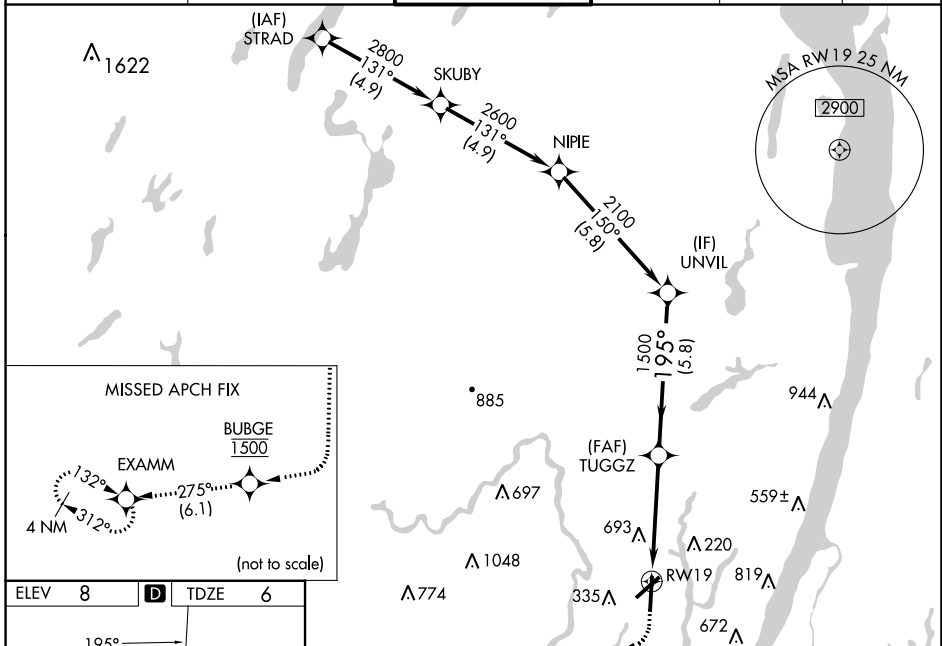
TETERBORO (TEB)

RNP APCH - GPS. RADAR required.

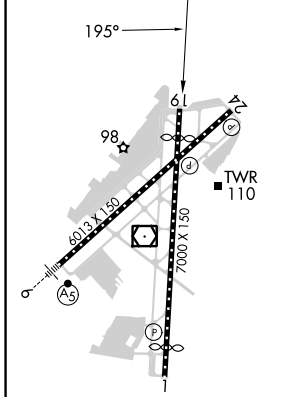
**⚠** Circling NA for Cats B, C, D northwest of Rwy 6-19. For uncompensated Baro-VNAV systems, LNAV/VNAV NA below -13°C or above 54°C.

**MISSED APPROACH:** Climb to 500 then climbing right turn direct BUBGE, cross BUBGE at 1500, then climb to 3000 on track 275° to EXAMM and hold, continue climb-in-hold to 3000.

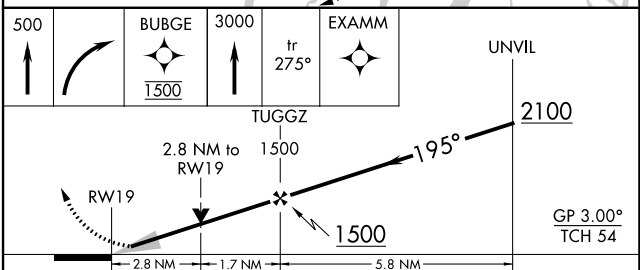
D-ATIS <b>114.2 132.85</b>	NEW YORK APP CON <b>127.6 379.9</b>	TETERBORO TOWER <b>119.5</b>	GND CON <b>121.9</b>	CLNC DEL <b>128.05</b>	CPDLC
-------------------------------	--	---------------------------------	-------------------------	---------------------------	-------



ELEV 8	<b>D</b>	TDZE 6
--------	----------	--------



TDZ/CL Rws 6 and 19  
REIL Rws 1, 6, 19 and 24  
HIRL Rws 1-19 and 6-24



CATEGORY	A	B	C	D
LPV DA		241-3/4	235 (300-3/4)	
LNAV/VNAV DA	1096-4 1090 (1100-4)			
LNAV MDA	960-1 1/4 954 (1000-1 1/4)	960-1 1/2 954 (1000-1 1/2)	960-3	954 (1000-3)
<b>C</b> CIRCLING	960-1 1/4 952 (1000-1 1/4)	960-1 1/2 952 (1000-1 1/2)	960-3 952 (1000-3)	1040-3 1032 (1100-3)

NE-2, 16 MAY 2024 to 13 JUN 2024

NE-2, 16 MAY 2024 to 13 JUN 2024