

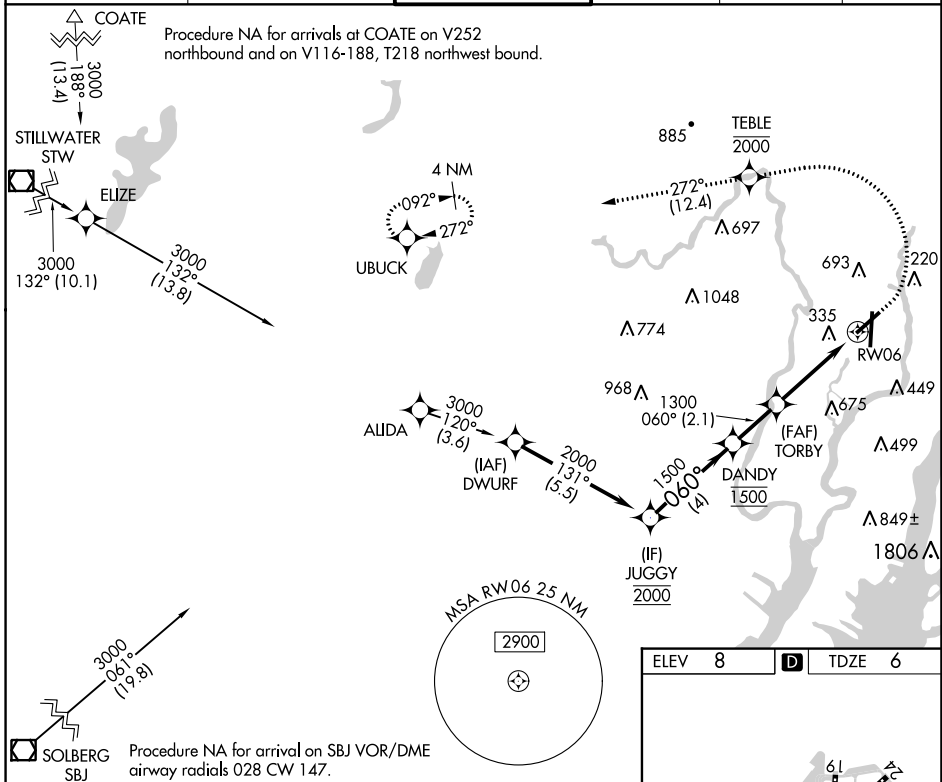
WAAS CH 65707 W06A	APP CRS 060°	Rwy Idg TDZE Apt Elev	6013 6 8
--	------------------------	-----------------------------	-------------------------------------

RNAV (GPS) Y RWY 6

TETERBORO (TEB)

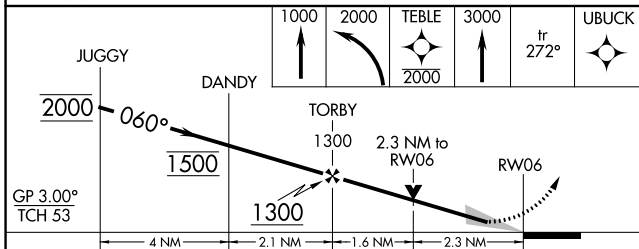
RNP APCH - GPS. RADAR required.	MALSR	MISSED APPROACH: Climb to 1000, then climbing left turn to 2000 direct TEBLE, cross TEBLE at or below 2000, then climb to 3000 on track 272° to UBUCK and hold.
<p>⚠ Circling NA for Cats B, C, and D northwest of Rwy 6 and 19. For inop ALS, increase LPV all Cats visibility to RVR 5500 and increase LNAV Cats C/D visibility to 2½ SM.</p>		

D-ATIS 114.2 132.85	NEW YORK APP CON 127.6 379.9	TETERBORO TOWER 119.5	GND CON 121.9	CLNC DEL 128.05	CPDLC
-------------------------------	--	---------------------------------	-------------------------	---------------------------	-------

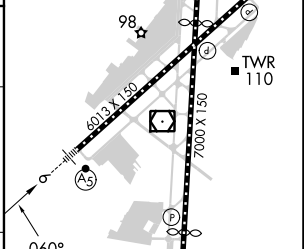


NE-2, 16 MAY 2024 to 13 JUN 2024

NE-2, 16 MAY 2024 to 13 JUN 2024



ELEV 8	D	TDZE 6
--------	---	--------



CATEGORY	A	B	C	D
LPV DA		369/35	363 (400-¾)	
LNAV MDA	800/24 794 (800-½)	800/40 794 (800-¾)	800-1¾ 794 (800-1¾)	
CIRCLING	800-1 792 (800-1)	800-1¼ 792 (800-1¼)	820-2½ 812 (900-2½)	1040-3 1032 (1100-3)

TDZ/CL Rwy 6 and 19
HIRL Rwy 1-19 and 6-24
REIL Rwy 1, 6, 19 and 24