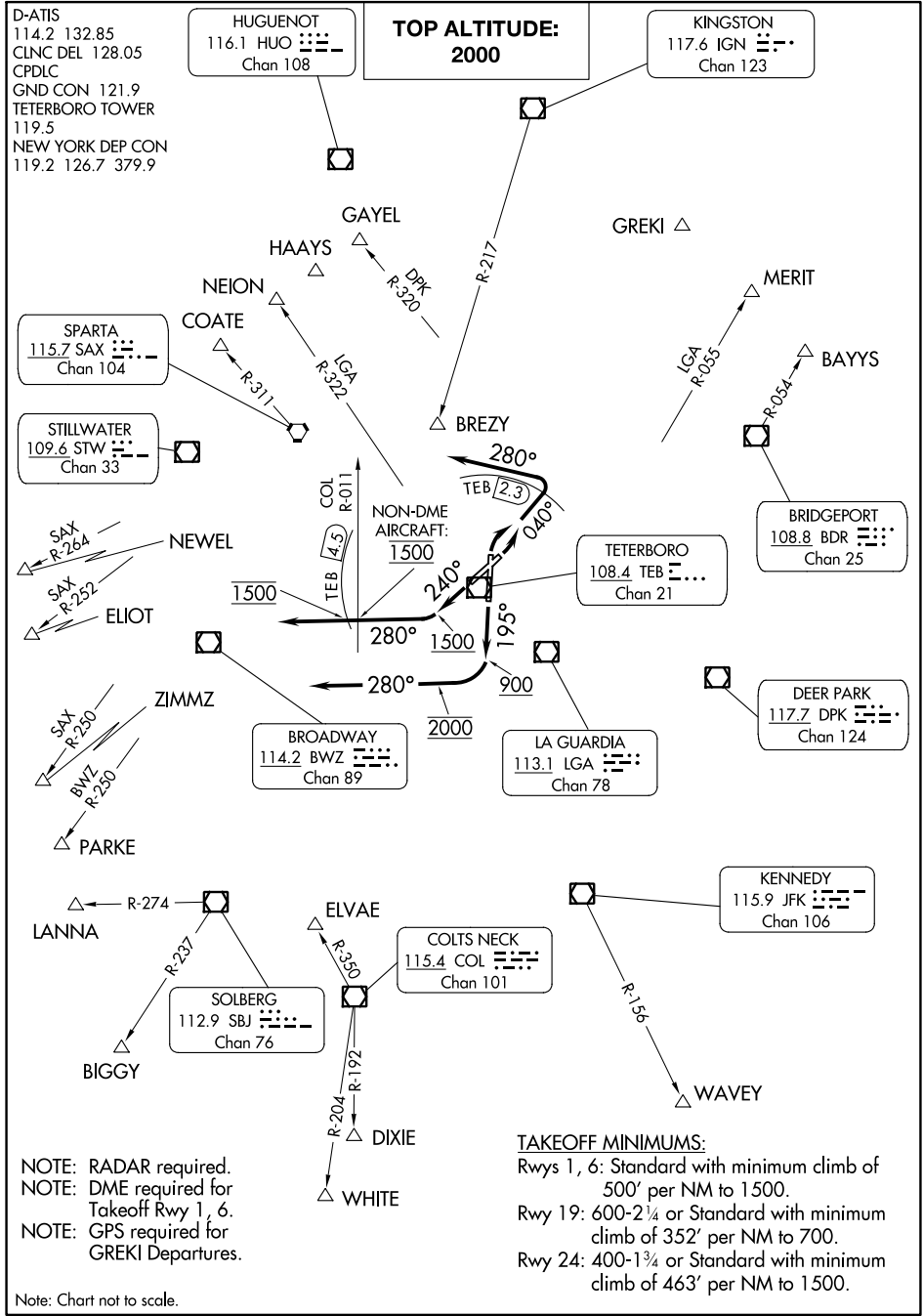


TETERBORO FOUR DEPARTURE



NE-2, 16 MAY 2024 to 13 JUN 2024

NE-2, 16 MAY 2024 to 13 JUN 2024

NOTE: RADAR required.
 NOTE: DME required for
 Takeoff Rwy 1, 6.
 NOTE: GPS required for
 GREKI Departures.

TAKEOFF MINIMUMS:
 Rwy 1, 6: Standard with minimum climb of
 500' per NM to 1500.
 Rwy 19: 600-2¼ or Standard with minimum
 climb of 352' per NM to 700.
 Rwy 24: 400-1¾ or Standard with minimum
 climb of 463' per NM to 1500.

Note: Chart not to scale.

TETERBORO FOUR DEPARTURE