

WILKES-BARRE FOUR ARRIVAL

TETERBORO, NEW JERSEY

NE-2, 16 MAY 2024 to 13 JUN 2024

NEW YORK APP CON
127.6 379.9
EWR D-ATIS
115.7 134.825

JAMESTOWN
114.7 JHW
Chan 94

ELMIRA
109.65 ULW
Chan 33 (Y)

L70-109
FL180
115.0
(60)

DMACK

HOXIE

SLATE RUN
113.9 SIT
Chan 86

STENT

WILKES-BARRE
111.6 LVZ
Chan 53
Expect FL180

HARTY

MUGZY
Expect 6000

SPARTA
115.7 SAX
Chan 104

HUGUENOT
116.1 HUO
Chan 108

STILLWATER
109.6 STW
Chan 33

ALLEN TOWN
117.5 FIC
Chan 122

ESSEX COUNTY
TETERBORO

MORRISTOWN MUNI

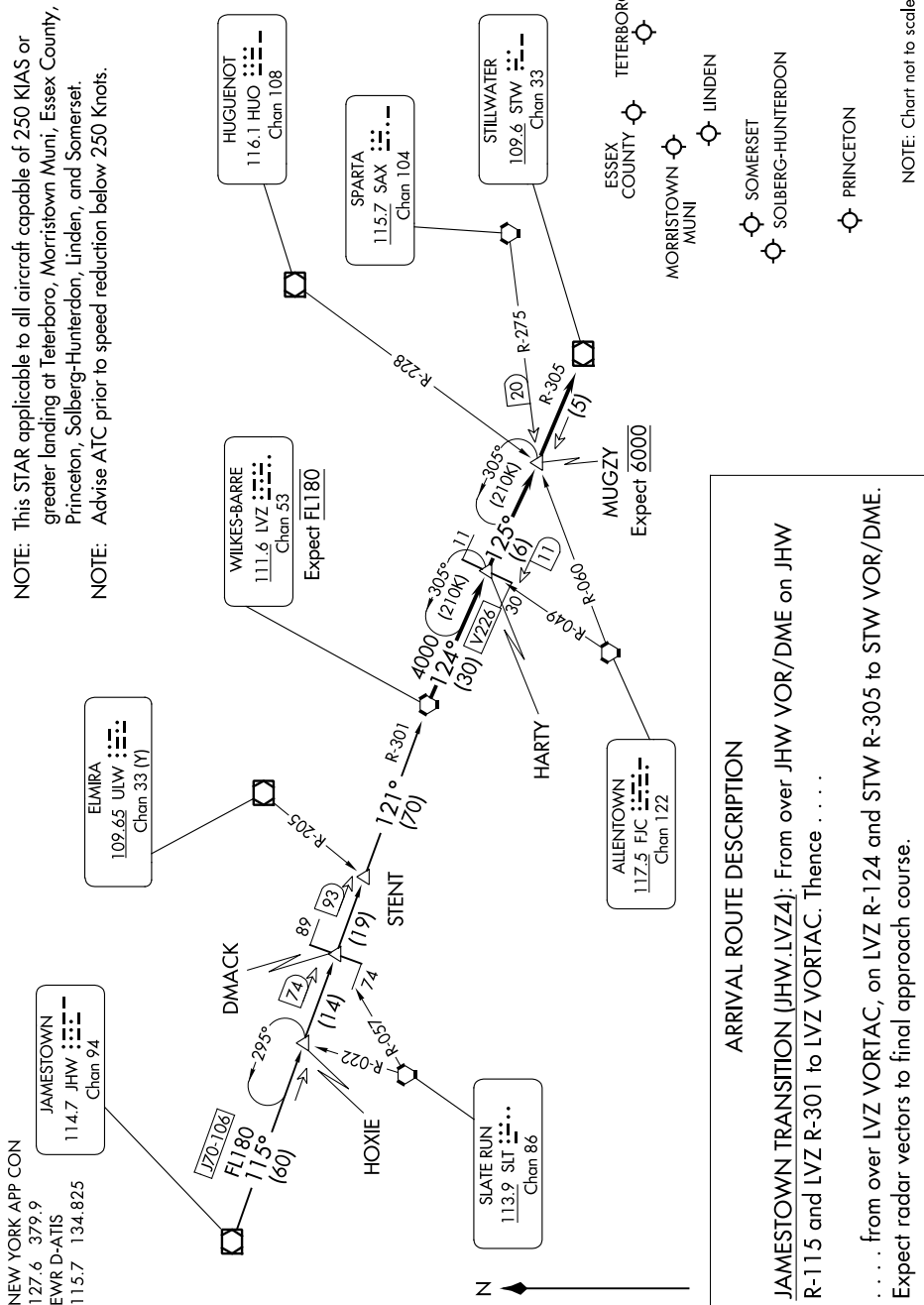
LINDEN

SOMERSET

SOLBERG-HUNTERDON

PRINCETON

NOTE: This STAR applicable to all aircraft capable of 250 KIAS or greater landing at Teterboro, Morristown Muni, Essex County, Princeton, Solberg-Hunterdon, Linden, and Somerset.
NOTE: Advise ATC prior to speed reduction below 250 Knots.



ARRIVAL ROUTE DESCRIPTION

JAMESTOWN TRANSITION (JHW.LVZ4): From over JHW VOR/DME on JHW R-115 and LVZ R-301 to LVZ VORTAC. Thence

. . . . from over LVZ VORTAC, on LVZ R-124 and STW R-305 to STW VOR/DME. Expect radar vectors to final approach course.

NOTE: Chart not to scale.

NE-2, 16 MAY 2024 to 13 JUN 2024

WILKES-BARRE FOUR ARRIVAL

TETERBORO, NEW JERSEY