

(HSR2.HSR) 23334

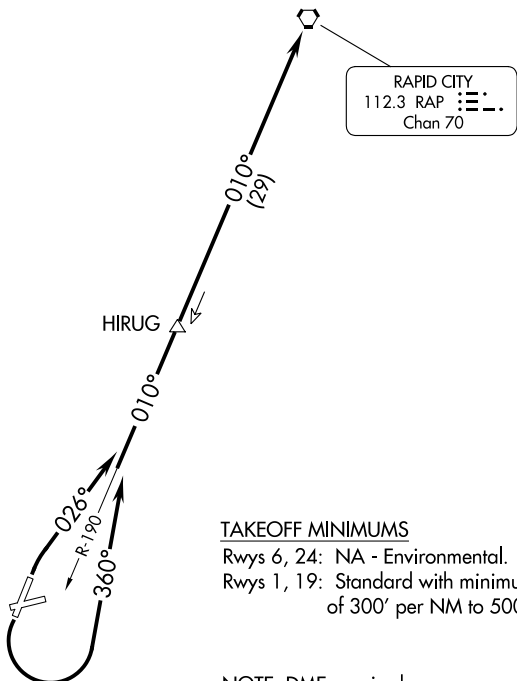
# HOT SPRINGS TWO DEPARTURE

AL-904 (FAA)

HOT SPRINGS MUNI (HSR)  
HOT SPRINGS, SOUTH DAKOTA

**TOP ALTITUDE:  
7000**

DENVER CENTER  
127.95 338.2



### TAKEOFF MINIMUMS

Rwys 6, 24: NA - Environmental.  
Rwys 1, 19: Standard with minimum climb  
of 300' per NM to 5000.

NOTE: DME required.

NOTE: Chart not to scale.



### DEPARTURE ROUTE DESCRIPTION

TAKEOFF RUNWAY 1: Climb heading 026° to intercept RAP VORTAC R-190 to RAP VORTAC, thence. . . .

TAKEOFF RUNWAY 19: Climbing left turn heading 360° to intercept RAP VORTAC R-190 to RAP VORTAC, thence. . . .

. . . .maintain 7000, expect filed altitude 10 minutes after departure.

**HOT SPRINGS TWO DEPARTURE**  
(HSR2.HSR) 21JUL16

HOT SPRINGS, SOUTH DAKOTA  
HOT SPRINGS MUNI (HSR)

NC-1, 16 MAY 2024 to 13 JUN 2024

NC-1, 16 MAY 2024 to 13 JUN 2024