

# ILS X or LOC/DME X RWY 13R

LOC I-NQI <b>110.9</b>	APCH CRS <b>130°</b>	Rwy Ldg TDZE Arprt Elev <b>8000</b> <b>50</b> <b>50</b>
---------------------------	-------------------------	---

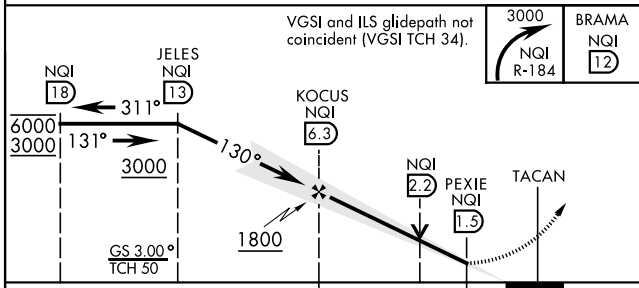
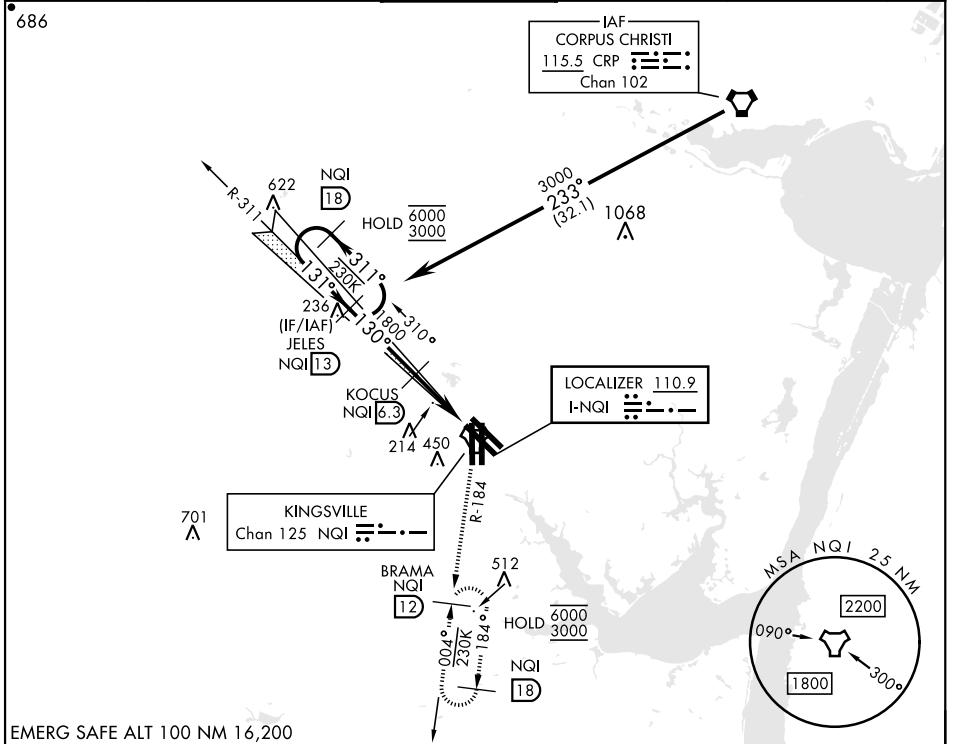
AL-918 [USN]

KINGSVILLE NAS (KNQI)

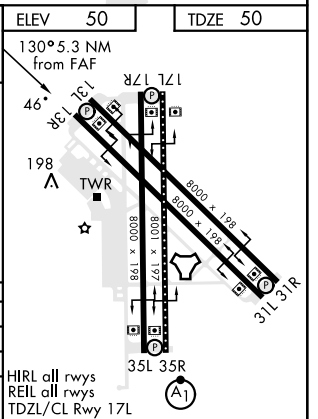
TACAN required.

MISSED APPROACH: Climbing right turn to 3000 to intercept NQI TACAN R-184 to BRAMA and hold.

ATIS ★ <b>282.25</b>	APP CON <b>119.9 290.45</b>	TOWER ★ <b>124.1 377.05</b>	GND CON <b>239.05</b>	CLNC DEL <b>328.4</b>	ASR/PAR
-------------------------	--------------------------------	--------------------------------	--------------------------	--------------------------	---------



CATEGORY	A	B	C	D
S-ILS 13R		250-¾	200	(200-¾)
S-LOC 13R	460-1	410 (500-1)	460-1½	410 (500-1½)
CIRCLING	540-1	490 (500-1)	710 (800-2)	710 (800-2½)



# ILS X or LOC/DME X RWY 13R

SC-3, 16 MAY 2024 to 13 JUN 2024

SC-3, 16 MAY 2024 to 13 JUN 2024