

# KINGSVILLE-THREE DEPARTURE (NQI3•NQI)

KINGSVILLE NAS (KNQI)

AL-918 [USN]

KINGSVILLE, TEXAS

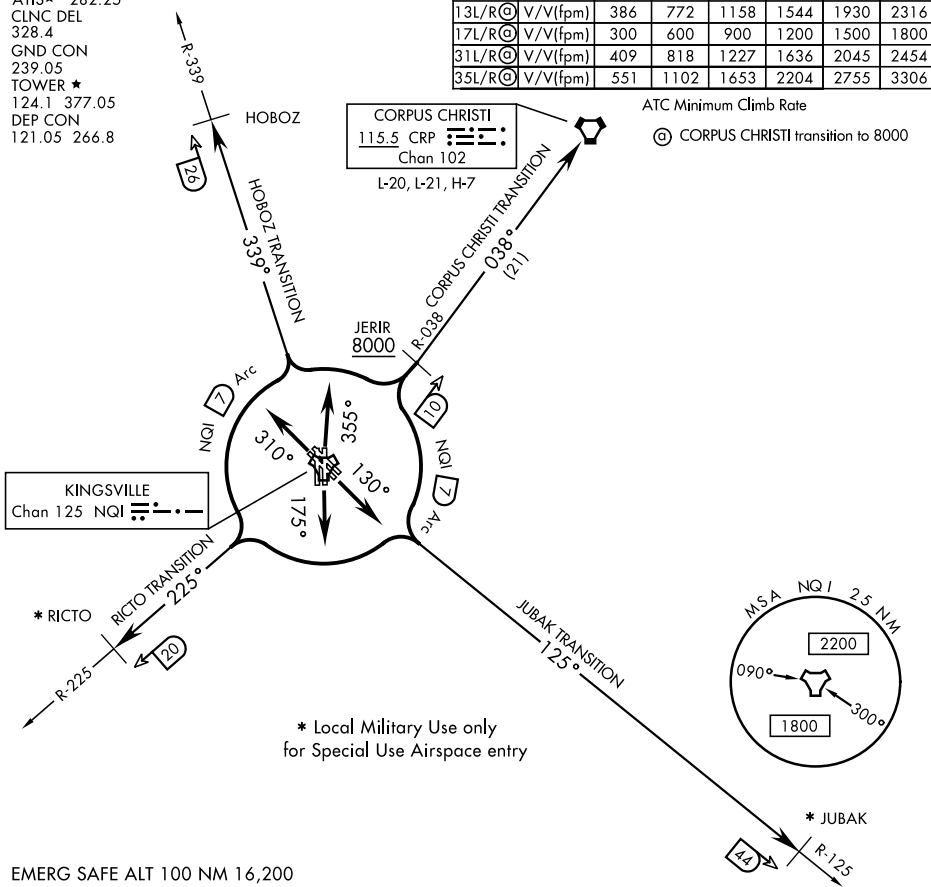
ATIS★ 282.25  
 CLNC DEL 328.4  
 GND CON 239.05  
 TOWER★ 124.1 377.05  
 DEP CON 121.05 266.8

Rwy	Knots	60	120	180	240	300	360
13L/RⓄ	V/V(fpm)	386	772	1158	1544	1930	2316
17L/RⓄ	V/V(fpm)	300	600	900	1200	1500	1800
31L/RⓄ	V/V(fpm)	409	818	1227	1636	2045	2454
35L/RⓄ	V/V(fpm)	551	1102	1653	2204	2755	3306

ATC Minimum Climb Rate

Ⓞ CORPUS CHRISTI transition to 8000

CORPUS CHRISTI  
 115.5 CRP  
 Chan 102  
 L-20, L-21, H-7



EMERG SAFE ALT 100 NM 16,200

## DEPARTURE ROUTE DESCRIPTION

TAKE-OFF RWY 13L/R: Climb via heading 130° to join NQI TACAN 7 DME arc, thence....

TAKE-OFF RWY 17L/R: Climb via heading 175° to join NQI TACAN 7 DME arc, thence....

TAKE-OFF RWY 31L/R: Climb via heading 310° to join NQI TACAN 7 DME arc, thence....

TAKE-OFF RWY 35L/R: Climb via heading 355° to join NQI TACAN 7 DME arc, thence....

### CORPUS CHRISTI TRANSITION (NQI3•CRP):

Rwys 13L/R and 17L/R: Turn left to intercept NQI 7 DME arc and arc NE. Turn right to intercept NQI R-038 to cross JERIR at or above 8000. Then on NQI R-038 to CRP VORTAC.

Rwys 31L/R and 35L/R: Turn right to intercept NQI 7 DME arc and arc NE. Turn left to intercept NQI R-038 to cross JERIR at or above 8000. Then on NQI R-038 to CRP VORTAC.

(Continued on next page)

# KINGSVILLE-THREE DEPARTURE (NQI3•NQI)

Orig 05NOV20

KINGSVILLE, TEXAS

KINGSVILLE NAS (KNQI)