

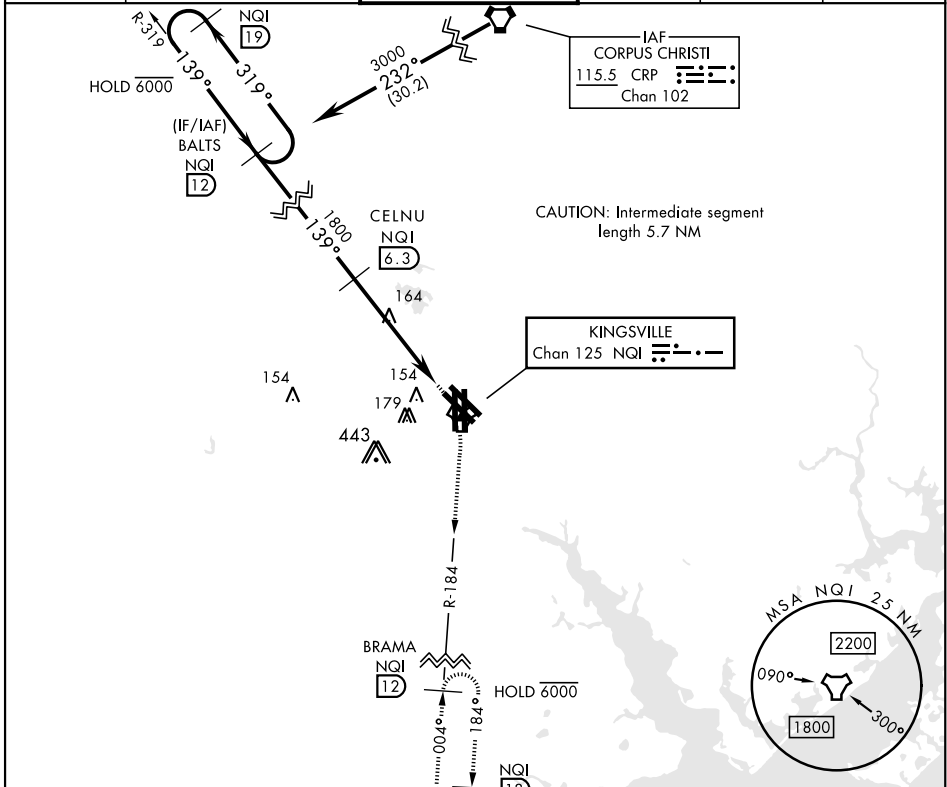
TACAN RWY 13L/R

TACAN NQI Chan 125	APCH CRS 139°	Rwy 13L Idg TDZE 49 Arprt Elev 50	Rwy 13R Idg TDZE 50 Arprt Elev 50
-----------------------	------------------	---	---

AL-918 [USN] KINGSVILLE NAS (KNQI)

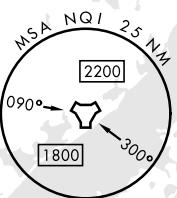
MISSED APPROACH: Climbing right turn to 3000 to intercept NQI TACAN R-184 to BRAMA and hold.

ATIS ★ 282.25	APP CON 119.9 290.45	TOWER ★ 124.1 377.05	GND CON 239.05	CLNC DEL 328.4	ASR/PAR
------------------	-------------------------	-------------------------	-------------------	-------------------	---------

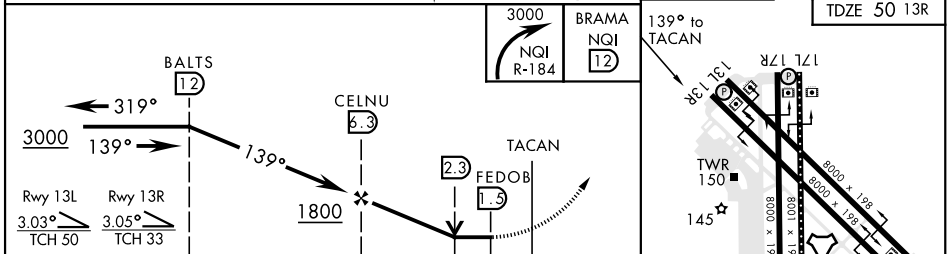


CAUTION: Intermediate segment length 5.7 NM

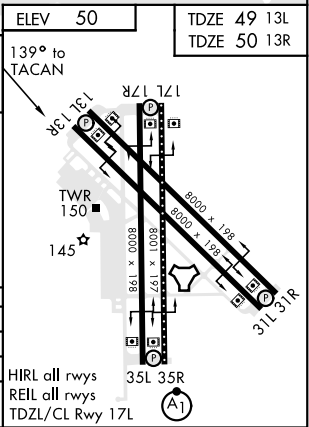
KINGSVILLE
Chan 125 NQI



EMERG SAFE ALT 100 NM 16,200



CATEGORY	A	B	C	D
S-13L	520-1	471 (500-1)	520-1 $\frac{3}{4}$	471 (500-1 $\frac{3}{4}$)
S-13R	520-1	470 (500-1)	520-1 $\frac{3}{4}$	470 (500-1 $\frac{3}{4}$)
CIRCLING	540-1	490 (500-1)	760-2 710 (800-2)	760-2 $\frac{1}{4}$ 710 (800-2 $\frac{1}{4}$)



TACAN RWY 13L/R

SC-3, 16 MAY 2024 to 13 JUN 2024

SC-3, 16 MAY 2024 to 13 JUN 2024