

# TACAN RWY 35R

TACAN NQI Chan 125	APCH CRS 004°	Rwy Ldg TDZE 49 Arprt Elev 50
-----------------------	------------------	--

AL-918 [USN]

KINGSVILLE NAS (KNQI)

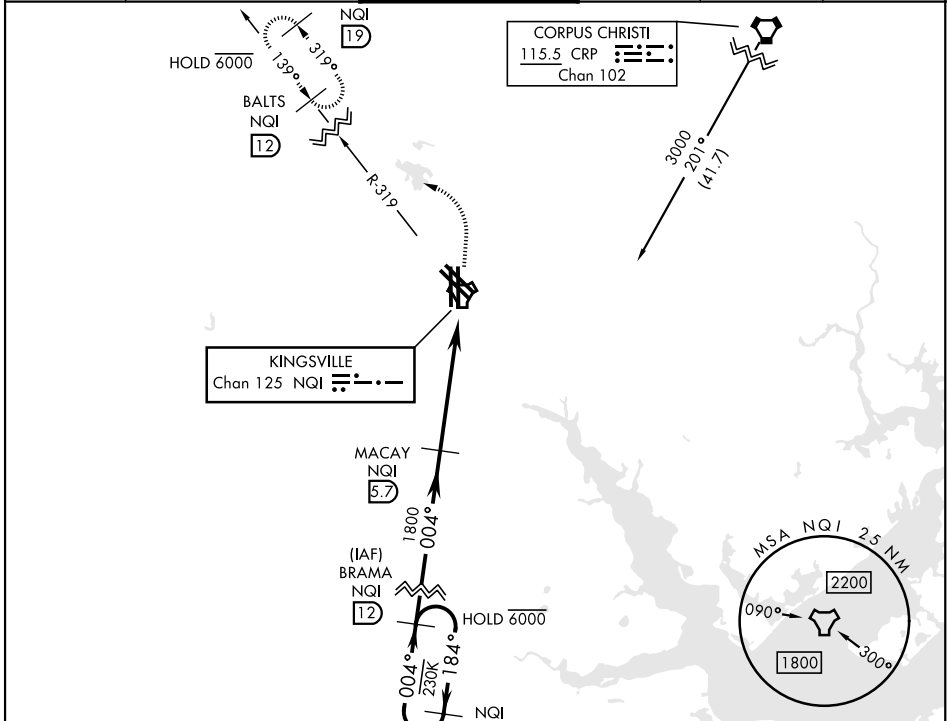
ALSF-1
 



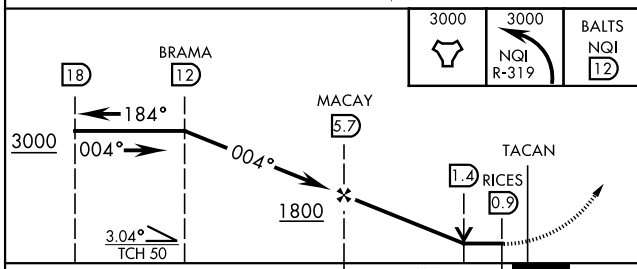
**MISSED APPROACH:** Climb to 3000 direct NQI TACAN and climbing left turn to intercept NQI R-319 to BALTS and hold. Continue climb-in-hold to 3000.

\* When ALS inop, increase vis to 1 mile.

ATIS ★ <b>282.25</b>	APP CON <b>119.9 290.45</b>	TOWER★ <b>124.1 377.05</b>	GND CON <b>239.05</b>	CLNC DEL <b>328.4</b>	ASR/PAR
-------------------------	--------------------------------	-------------------------------	--------------------------	--------------------------	---------



EMERG SAFE ALT 100 NM 16,200



ELEV 50	TDZE 49
---------	---------

TWR  
 128  
 35L 35R  
 004° to TACAN

CATEGORY	A	B	C	D
S-35R *	420-½	372 (400-½)	420-¾	372 (400-¾)
CIRCLING	540-1	490 (500-1)	760-2 710 (800-2)	760-2¼ 710 (800-2¼)

# TACAN RWY 35R

SC-3, 16 MAY 2024 to 13 JUN 2024

SC-3, 16 MAY 2024 to 13 JUN 2024