

# TACAN Z RWY 17R

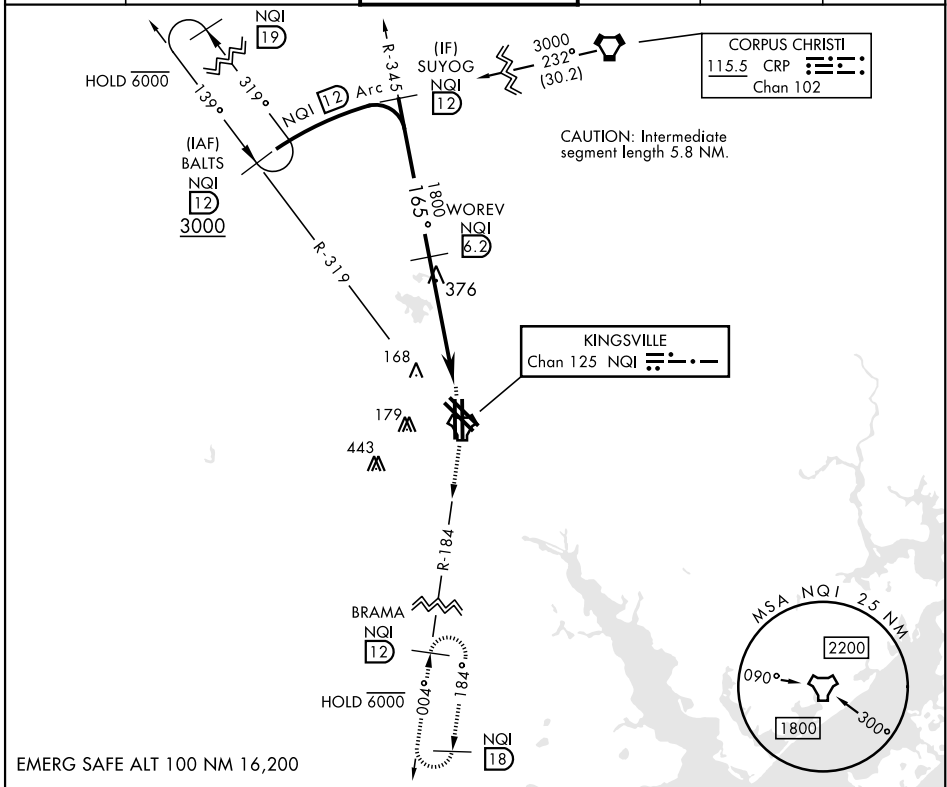
TACAN NQI Chan <b>125</b>	APCH CRS <b>165°</b>	Rwy Ldg TDZE Arprt Elev	<b>8000</b> <b>49</b> <b>50</b>
------------------------------	-------------------------	----------------------------	---------------------------------------

AL-918 [USN]

KINGSVILLE NAS (KNQI)

**MISSED APPROACH:** Climb to 3000 direct NQI TACAN and climbing right turn to intercept NQI R-184 to BRAMA and hold.

ATIS ★ <b>282.25</b>	APP CON <b>119.9 290.45</b>	TOWER ★ <b>124.1 377.05</b>	GND CON <b>239.05</b>	CLNC DEL <b>328.4</b>	ASR/PAR
-------------------------	--------------------------------	--------------------------------	--------------------------	--------------------------	---------



EMERG SAFE ALT 100 NM 16,200

3000 NQI		BRAMA NQI 12		ELEV 50	TDZE 49
SUYOG R-345		WOREV 6.2		165° to TACAN	
1800		1800		3000 x 198	
3.05° TCH 50		860		8001 x 197	
2.9 NM		1.9 NM		35L 35R	
CATEGORY	A	B	C	D	
S-17R	400-1	351	(400-1)		
CIRCLING	540-1	490 (500-1)	760-2 710 (800-2)	760-2½ 710 (800-2½)	HIRL all rwys REIL all rwys TDZL/CL Rwy 17L

KINGSVILLE, TEXAS  
Amdt 1 05NOV20

27°30'N-97°49'W

KINGSVILLE NAS (KNQI)

# TACAN Z RWY 17R

SC-3, 16 MAY 2024 to 13 JUN 2024

SC-3, 16 MAY 2024 to 13 JUN 2024