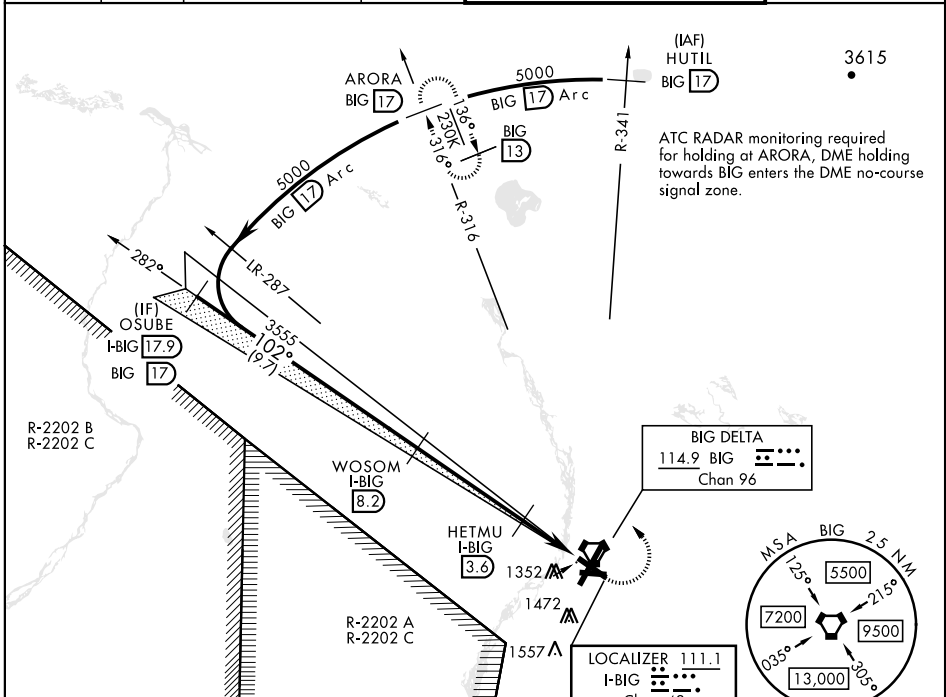


# ILS or LOC/DME RWY 10

LOC/DME I-BIG <b>111.1</b> Chan <b>48</b>	APCH CRS <b>102°</b>	Rwy ldg TDZE Arpt Elev <b>6115</b> <b>1253</b> <b>1285</b>	AL-1218 [USA]	ALLEN AAF (PABI)
---	-------------------------	---	---------------	------------------

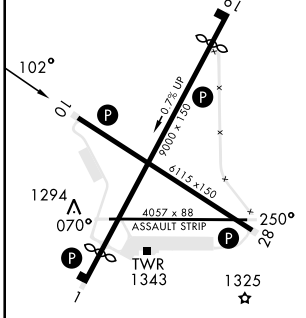
DME required		MISSED APPROACH: Climb to 2200 then climbing left turn to 5000 via BIG R-316 to ARORA/BIG 17 DME and hold.		
* Circling not authorized East of Rwy 1-19.				

ATIS <b>132.075</b>	ASOS <b>135.65</b>	ANCHORAGE CENTER <b>135.3 322.5</b>	CTAF <b>122.90</b>	TOWER ★ <b>119.8 235.775 40.8 (E) FM</b>	GND CON <b>118.225 251.05</b>
------------------------	-----------------------	--	-----------------------	---	----------------------------------



ELEV 1285	TDZE 1253
-----------	-----------

Rwy 1 ldg 8000'  
Rwy 19 ldg 8000'



OSUBE I-BIG 17.9	WOSOM I-BIG 8.2	HETMU I-BIG 3.6	CIDIX I-BIG 1.1	2200	5000
------------------	-----------------	-----------------	-----------------	------	------

Use I-BIG DME when on localizer course.  
Procedure Turn NA

GS 3.00° TCH 51	4.6 NM	2.5 NM
-----------------	--------	--------

CATEGORY	A	B	C	D
S-ILS 10	1453-¾	200	(200-¾)	
S-LOC 10	1620-1	367	(400-1)	
<b>C</b> CIRCLING*	1740-1 455 (500-1)	1780-1 495 (500-1)	1860-1½ 575 (600-1½)	2040-2½ 755 (800-2½)

HIRL Rwy 1-19 and 10-28  
MIRL Rwy 070°-250°  
REIL Rwy 10-28

# ILS or LOC/DME RWY 10

AK, 16 MAY 2024 to 11 JUL 2024

AK, 16 MAY 2024 to 11 JUL 2024